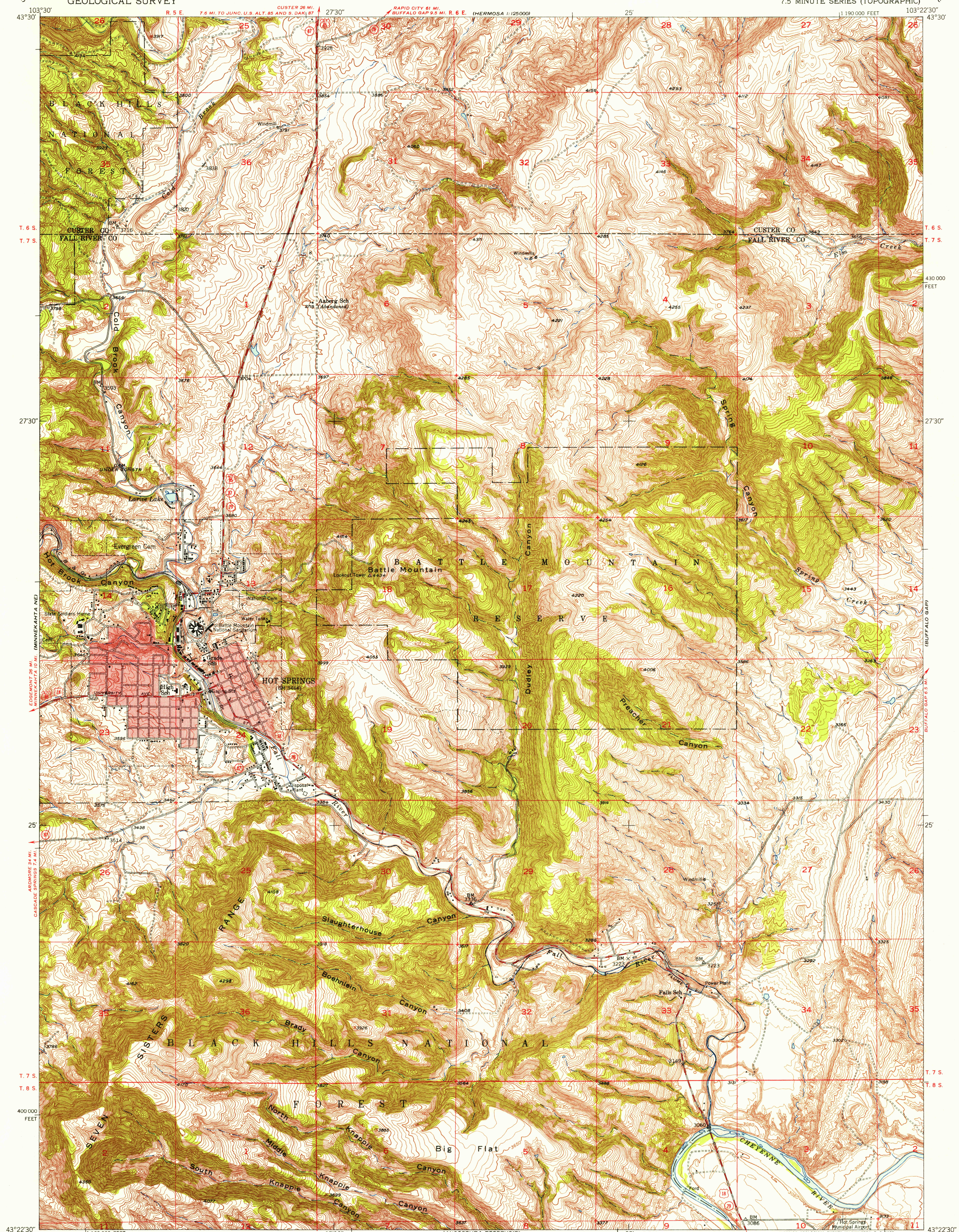
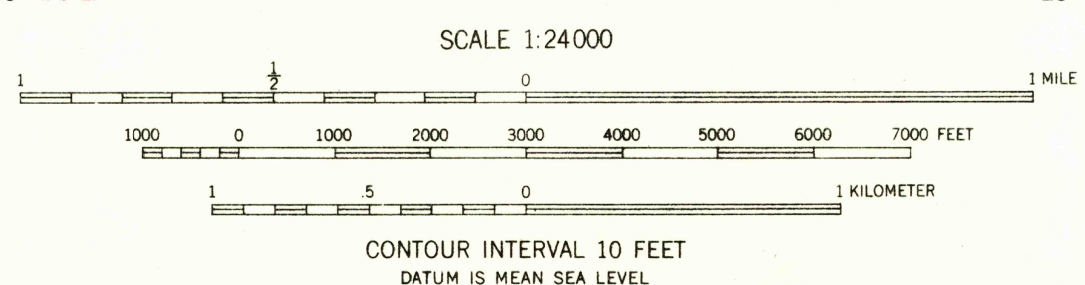


U.S.G.S.
FILE COPY
TOPOGRAPHIC DIVISION



Mapped, edited, and published by the Geological Survey as part of the Department of the Interior program for the development of the Missouri River Basin Control by USGS and US&CGS
Topography from aerial photographs by multiplex methods
Aerial photographs taken 1948. Field check 1950
Polyconic projection. 1927 North American datum
10,000-foot grid based on South Dakota coordinate system, south zone
Red tint indicates areas in which only landmark buildings are shown

TRUE NORTH
MAGNETIC NORTH
14°
APPROXIMATE MEAN DECLINATION, 1950



USGS
HISTORICAL FILE
TOPOGRAPHIC DIVISION

ROAD CLASSIFICATION
Heavy-duty 4 LANE, 6 LANE Light-duty
Medium-duty 4 LANE, 6 LANE Unimproved dirt
U. S. Route State Route

HOT SPRINGS, S. DAK.
N4322.5-W10322.5/7.5
1950

THIS MAP COMPLIES WITH NATIONAL MAP ACCURACY STANDARDS
FOR SALE BY U. S. GEOLOGICAL SURVEY, FEDERAL CENTER, DENVER, COLORADO OR WASHINGTON 25, D. C.
A FOLDER DESCRIBING TOPOGRAPHIC MAPS AND SYMBOLS IS AVAILABLE ON REQUEST

U.S.G.S.
FILE COPY
TOPOGRAPHIC DIVISION
OCT 21 1955

5325