

5271 IV SW
(FANNY PEAK)

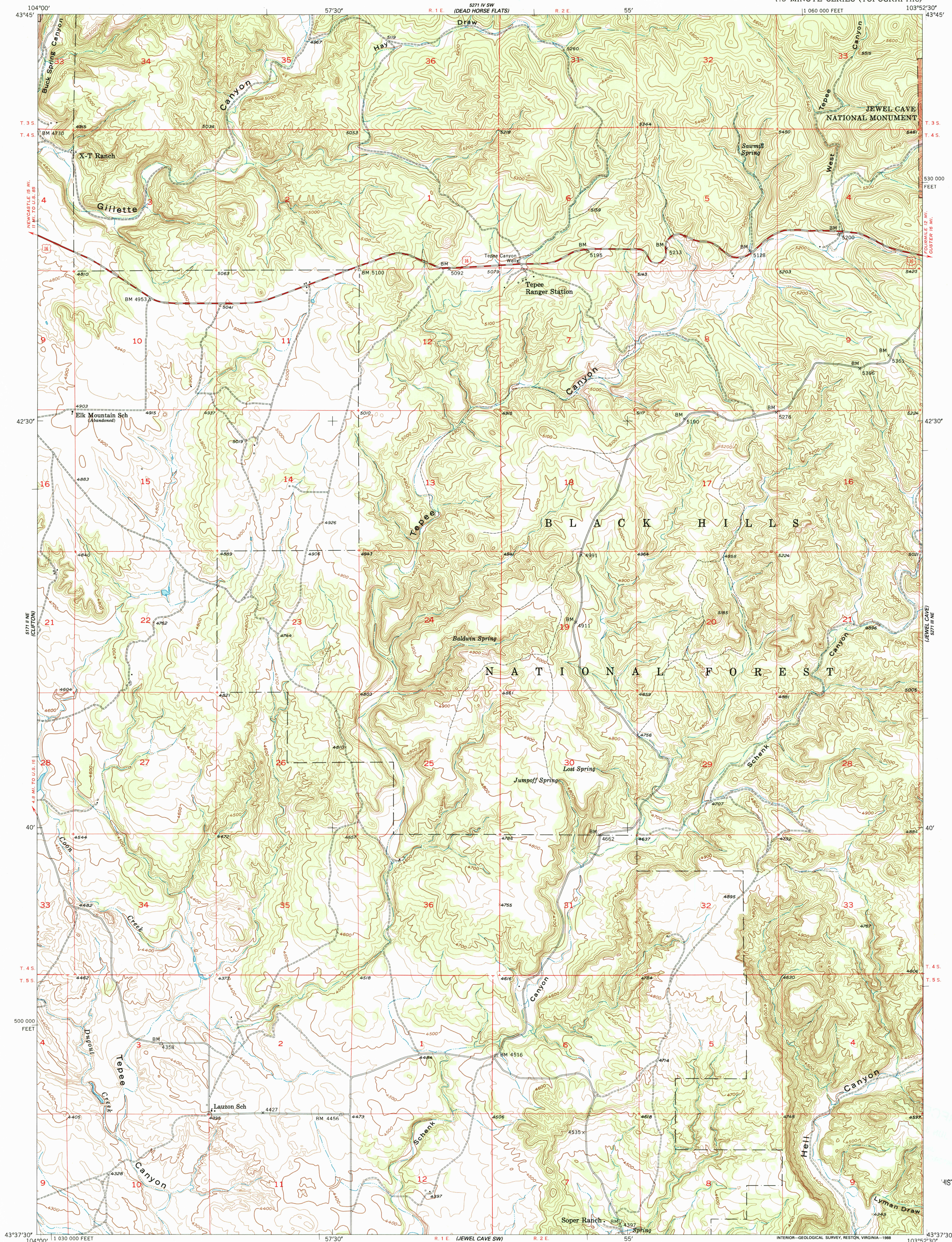


U.S. DEPARTMENT OF THE INTERIOR
U.S. GEOLOGICAL SURVEY

UNITED STATES
ATOMIC ENERGY COMMISSION

JEWEL CAVE NW QUADRANGLE
SOUTH DAKOTA-CUSTER CO.
7.5 MINUTE SERIES (TOPOGRAPHIC)

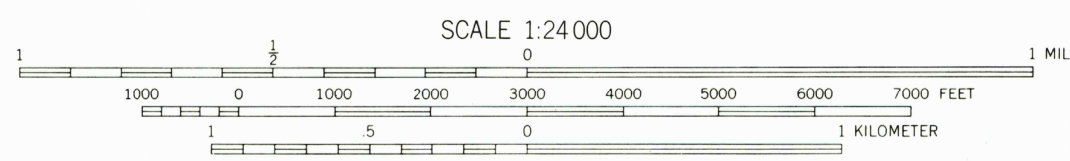
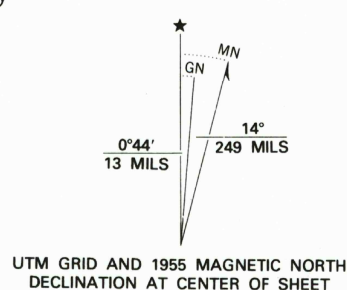
5271 NE
(SIGNAL HILL)



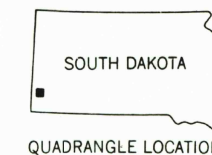
RECEIVED
JUN 3 0 2002

U.S. GEOLOGICAL SURVEY
HISTORICAL MAP ARCHIVES

Mapped, edited, and published by the Geological Survey
Control by USGS and USC&GS
Topography from aerial photographs by multiplex methods
Aerial photographs taken 1953. Field check 1955
Polyconic projection. 1927 North American datum
10,000-foot grid based on South Dakota coordinate system,
south zone
To place on the predicted North American Datum 1983,
move the projection lines 6 meters north and
43 meters east as shown by dashed corner ticks



CONTOUR INTERVAL 20 FEET
NATIONAL GEODETIC VERTICAL DATUM OF 1929



ROAD CLASSIFICATION
Heavy-duty ——— Light-duty ———
Medium-duty ——— Unimproved dirt ———
U.S. Route ——— State Route ———

JEWEL CAVE NW, S. DAK.

43103-F8-TF-024

1955

DMA 5271 III NW-SERIES V873

THIS MAP COMPLIES WITH NATIONAL MAP ACCURACY STANDARDS
FOR SALE BY U.S. GEOLOGICAL SURVEY, DENVER, COLORADO 80225, OR RESTON, VIRGINIA 22092
A FOLDER DESCRIBING TOPOGRAPHIC MAPS AND SYMBOLS IS AVAILABLE ON REQUEST

