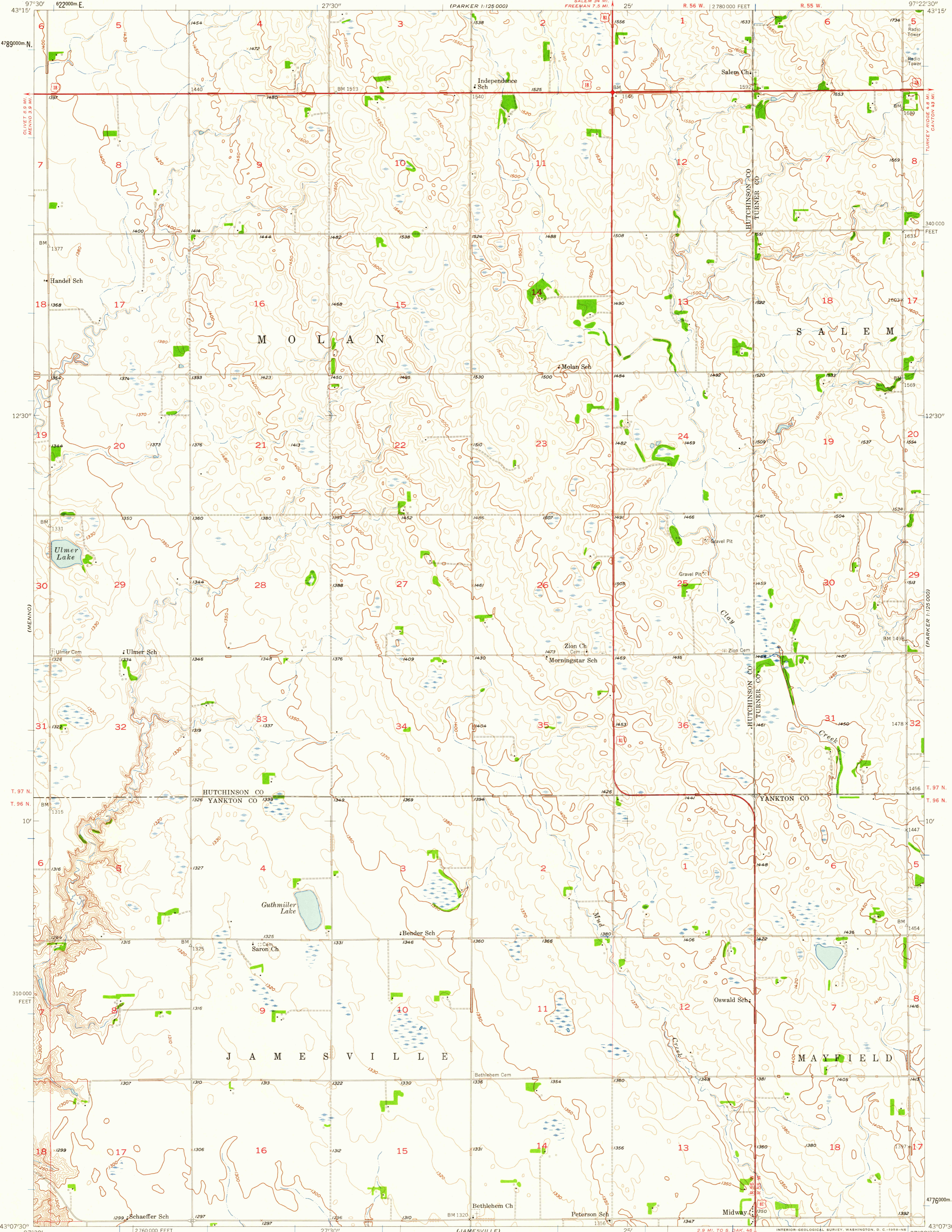
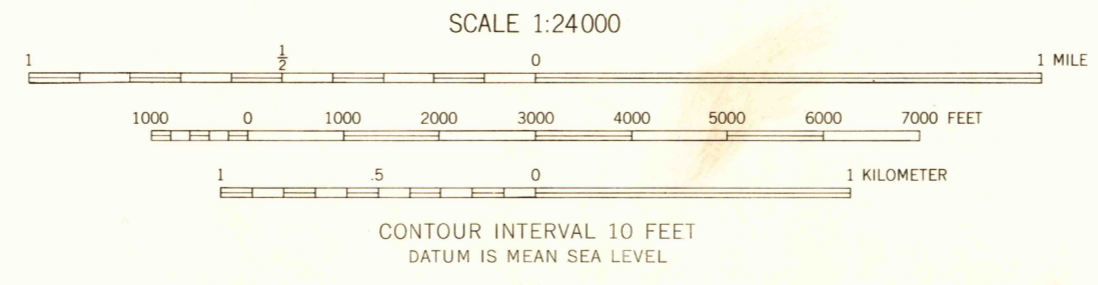


(PARKER 1:125 000)



Mapped, edited, and published by the Geological Survey as part of the Department of the Interior program for the development of the Missouri River Basin
Control by USGS and USC&GS
Topography from aerial photographs by Kelsch plotter
Aerial photographs taken 1954. Field check 1957
Polyconic projection. 1927 North American datum
10,000-foot grid based on South Dakota coordinate system, south zone
1000-meter Universal Transverse Mercator grid ticks, zone 14, shown in blue

10°
TRUE NORTH
MAGNETIC NORTH
APPROXIMATE MEAN DECLINATION, 1957



USGS
HISTORICAL FILE
TOPOGRAPHIC DIVISION
SOUTH DAKOTA
QUADRANGLE LOCATION

ROAD CLASSIFICATION
Heavy duty ——— Light duty ———
Unimproved dirt - - - - -
U.S. Route

MIDWAY, S. DAK.
N 4307.5—W 9722.5/7.5

THIS MAP COMPLIES WITH NATIONAL MAP ACCURACY STANDARDS
FOR SALE BY U. S. GEOLOGICAL SURVEY, DENVER 2, COLORADO OR WASHINGTON 25, D. C.
A FOLDER DESCRIBING TOPOGRAPHIC MAPS AND SYMBOLS IS AVAILABLE ON REQUEST

1957

RETURN TO:
USGS AND HISTORICAL MAP ARCHIVES

U.S.G.S.
FILE COPY
TOPOGRAPHIC DIVISION

DEC 17 1958

2465