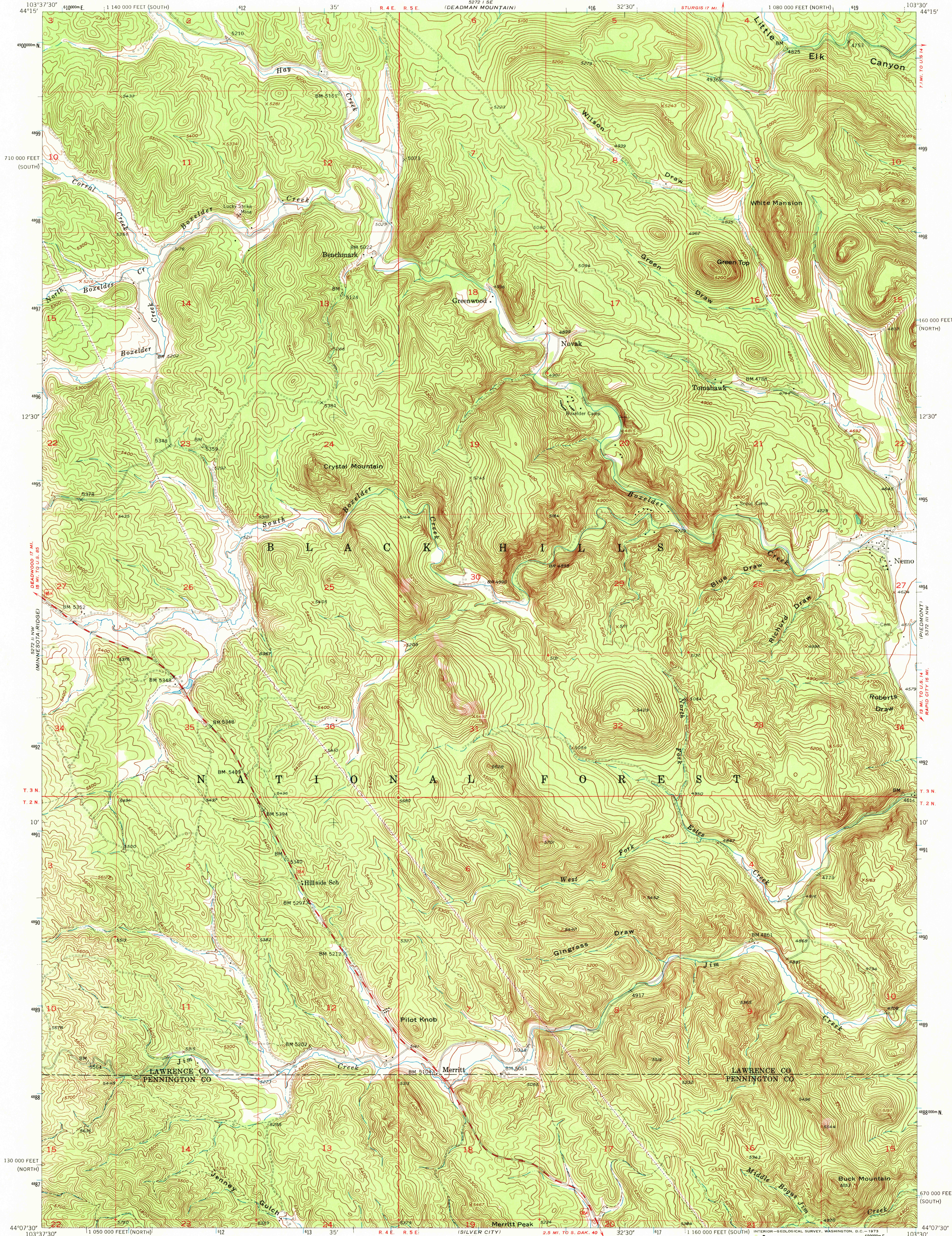
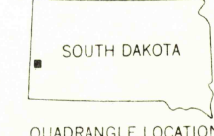
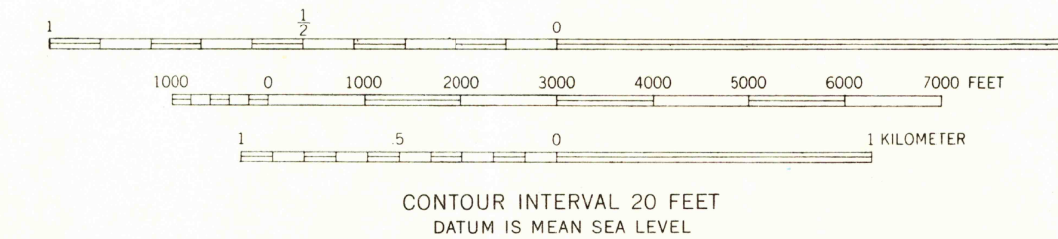
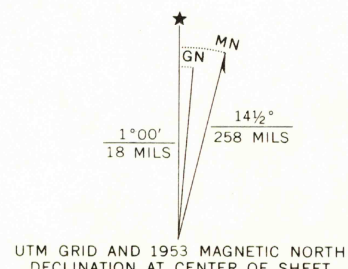


UNITED STATES
DEPARTMENT OF THE INTERIOR
GEOLOGICAL SURVEY

NEMO QUADRANGLE
SOUTH DAKOTA
7.5 MINUTE SERIES (TOPOGRAPHIC)



Maped, edited, and published by the Geological Survey
Control by USGS and USC&GS
Topography from aerial photographs by multiplex methods
Aerial photographs taken 1952. Field check 1953
Polyconic projection. 1927 North American datum
10,000-foot grids based on South Dakota coordinate system,
north and south zones
Unchecked elevations are shown in brown
1000-meter Universal Transverse Mercator grid ticks,
zone 13, shown in blue



ROAD CLASSIFICATION
Heavy-duty ——— 4 LANE 16 LANE Light-duty ———
Medium-duty ——— 4 LANE 16 LANE Unimproved dirt ———
U.S. Route State Route

SEP 25 1973
NEMO, S. DAK.
N4407.5-W10330/7.5
1953

THIS MAP COMPLIES WITH NATIONAL MAP ACCURACY STANDARDS
FOR SALE BY U.S. GEOLOGICAL SURVEY, DENVER, COLORADO 80225, OR WASHINGTON, D.C. 20242
A FOLDER DESCRIBING TOPOGRAPHIC MAPS AND SYMBOLS IS AVAILABLE ON REQUEST

AMS 5272 II NE-SERIES V873