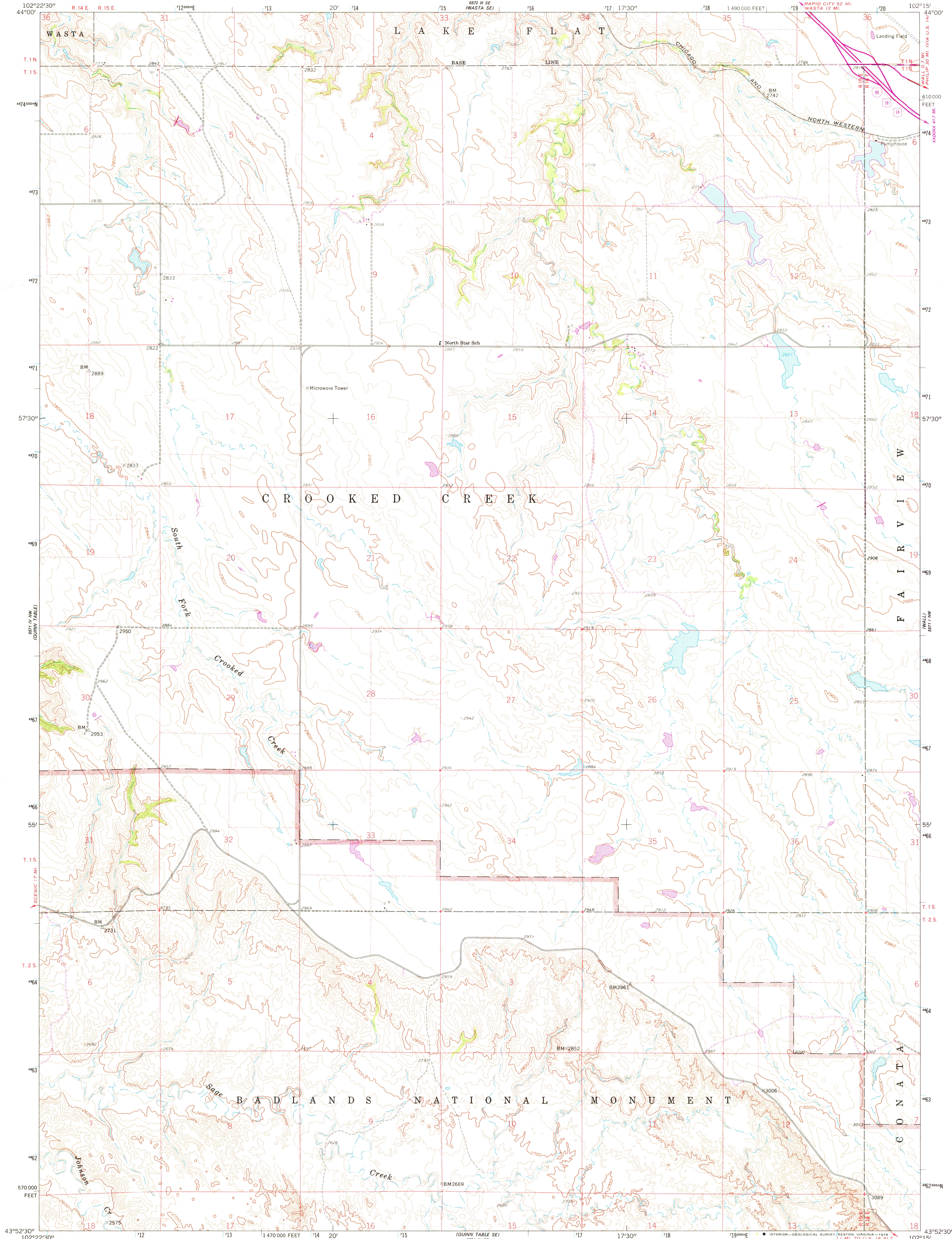


UNITED STATES
DEPARTMENT OF THE INTERIOR
GEOLOGICAL SURVEY



QUINN TABLE NE QUADRANGLE
SOUTH DAKOTA—PENNINGTON CO.
7.5 MINUTE SERIES (TOPOGRAPHIC)



Mapped, edited, and published by the Geological Survey
as part of the Department of the Interior program
for the development of the Missouri River Basin

Control by USGS and USC&GS

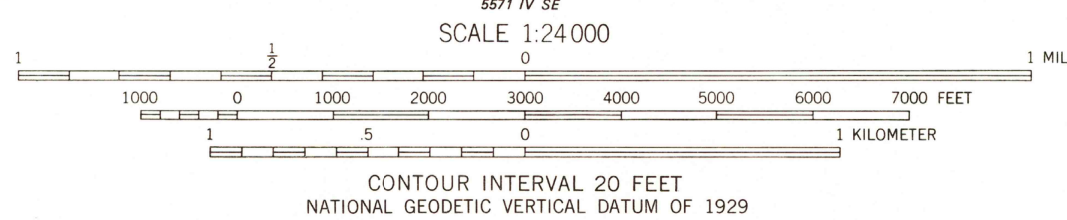
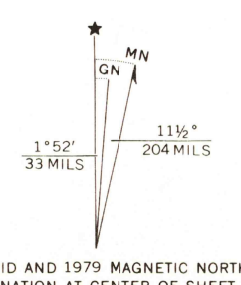
Topography from aerial photographs by photogrammetric methods
Aerial photographs taken 1956. Field check 1960

Polyconic projection. 1927 North American datum
10,000-foot grid based on South Dakota coordinate system,
south zone

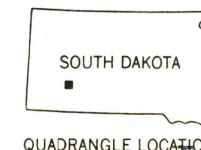
1000-meter Universal Transverse Mercator grid ticks,
zone 13, shown in blue

Fine red dashed lines indicate selected fence and field lines where
generally visible on aerial photographs. This information is unchecked

There may be private inholdings within the boundaries of
the National or State reservations shown on this map



THIS MAP COMPLIES WITH NATIONAL MAP ACCURACY STANDARDS
FOR SALE BY U. S. GEOLOGICAL SURVEY, DENVER, COLORADO 80225, OR RESTON, VIRGINIA 22092
A FOLDER DESCRIBING TOPOGRAPHIC MAPS AND SYMBOLS IS AVAILABLE ON REQUEST



USGS
Historical File
Topographic Division

ROAD CLASSIFICATION
Primary highway, all weather, Light-duty road, all weather,
hard surface, improved surface
Secondary highway, all weather, Unimproved road, fair or dry
hard surface, weather
Interstate Route U. S. Route State Route

QUINN TABLE NE, S. DAK.
N4352.5-W10215/7.5

1960
PHOTOREVISED 1979
AMS 5571 IV NE-SERIES 7873

Revisions shown in purple compiled from aerial photographs
taken 1976 and other source data. This information not
field checked. Map edited 1979

MAY 0 1 1979

1850