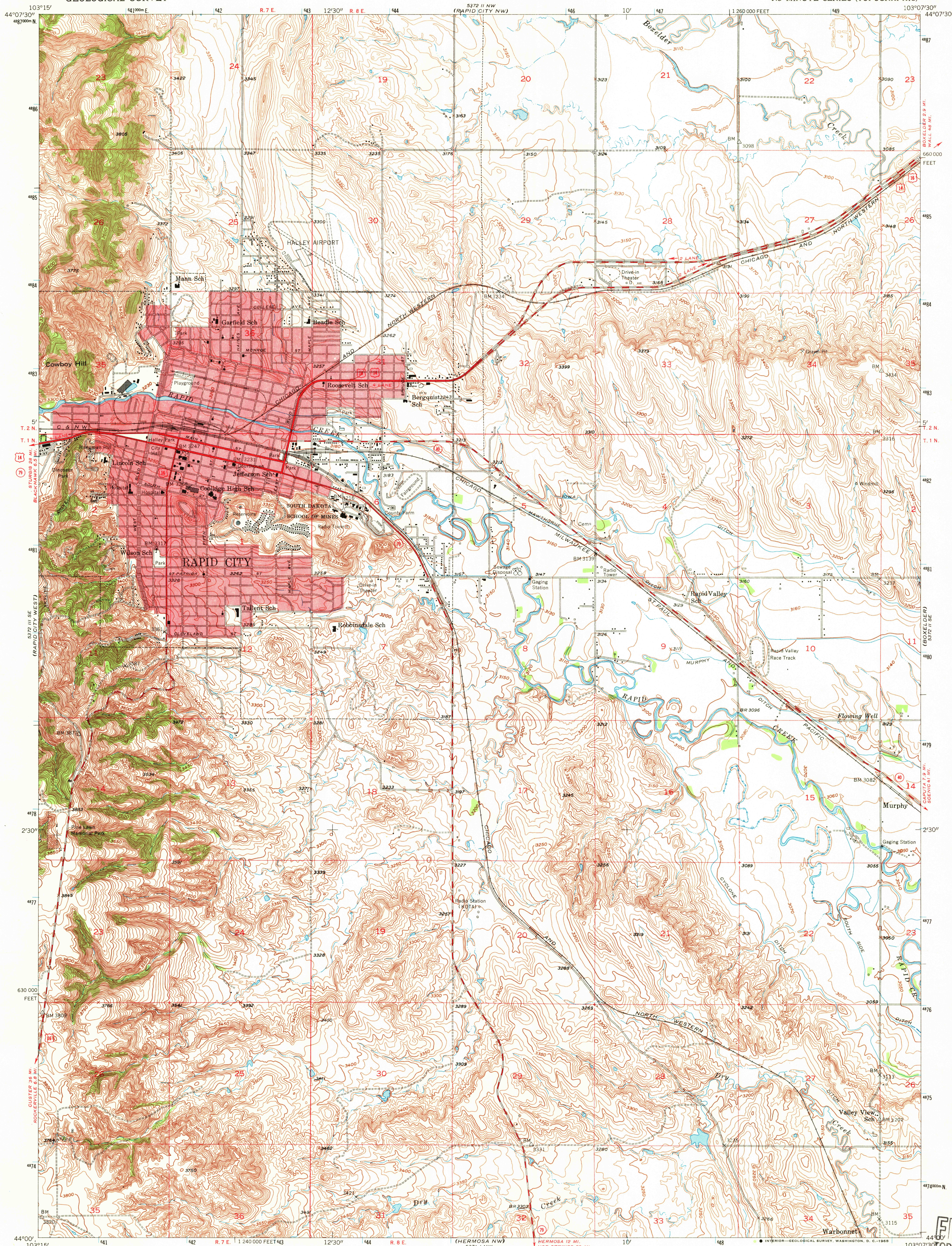


UNITED STATES
DEPARTMENT OF THE INTERIOR
GEOLOGICAL SURVEY

RAPID CITY EAST QUADRANGLE
SOUTH DAKOTA—PENNINGTON CO.
7.5 MINUTE SERIES (TOPOGRAPHIC)



Mapped, edited, and published by the Geological Survey

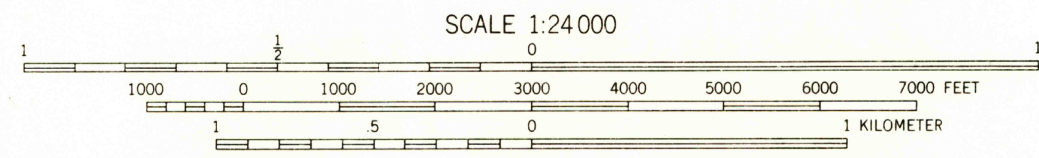
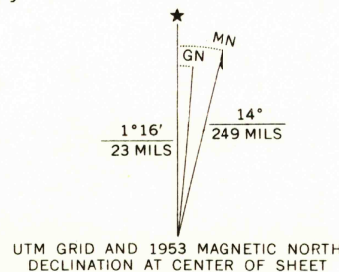
Control by USGS and USC&GS

Topography from aerial photographs by multiplex methods
Aerial photographs taken 1952. Field check 1953

Polyconic projection. 1927 North American datum
10,000-foot grid based on South Dakota coordinate system,
south zone

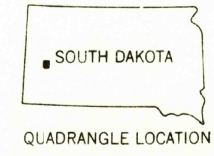
Rec tint indicates areas in which only
landmark buildings are shown

1000-meter Universal Transverse Mercator grid ticks,
zone 13, shown in blue



CONTOUR INTERVAL 10 FEET
DATUM IS MEAN SEA LEVEL

USGS
HISTORICAL FILE
TOPOGRAPHIC DIVISION



ROAD CLASSIFICATION
Heavy-duty ——— 4 LANE 16 LANE Light-duty ———
Medium-duty ——— 4 LANE 16 LANE Unimproved dirt ———
U. S. Route ——— State Route ———

RAPID CITY EAST, S. DAK.
N 4400—W 10307.5/7.5

1953

AMS 5372 II SW—SERIES V873

U.S.G.S.
FILE COPY
TOPOGRAPHIC DIVISION

FEB 7 1969

2595