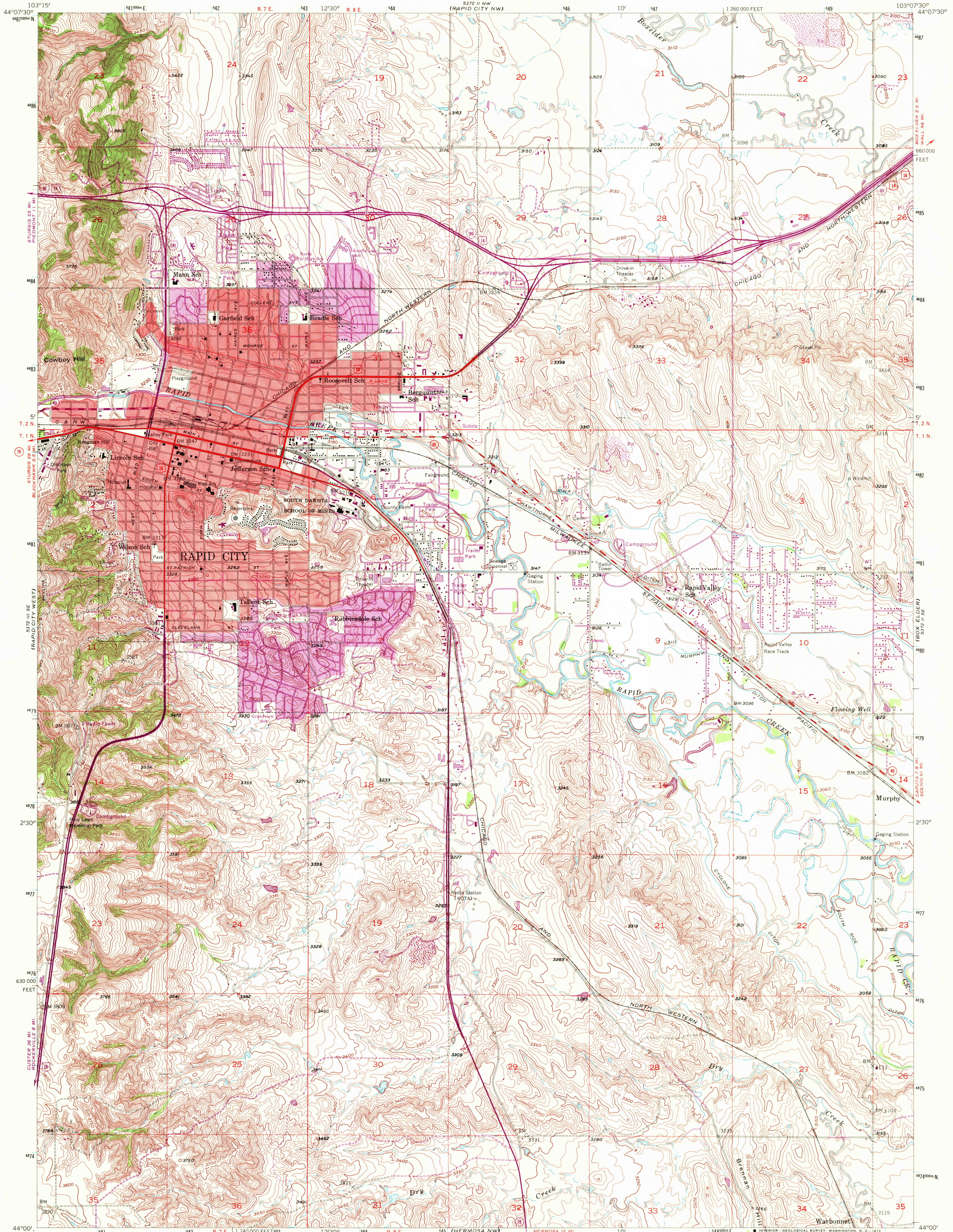


UNITED STATES
DEPARTMENT OF THE INTERIOR
GEOLOGICAL SURVEY

RAPID CITY EAST QUADRANGLE
SOUTH DAKOTA—PENNINGTON CO.
7.5 MINUTE SERIES (TOPOGRAPHIC)



Mapped, edited, and published by the Geological Survey

Control by USGS and USC&GS

Topography from aerial photographs by multiplex methods

Aerial photographs taken 1952. Field check 1953

Polyconic projection. 1927 North American datum

10,000-foot grid based on South Dakota coordinate system,

south zone

Red tint indicates areas in which only

landmark buildings are shown

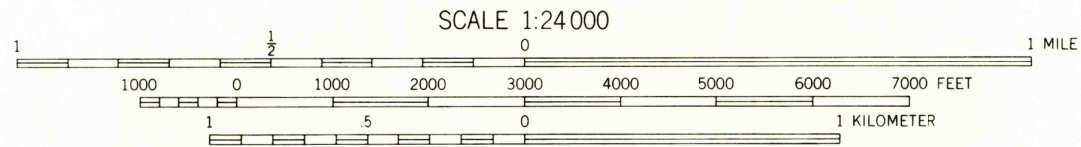
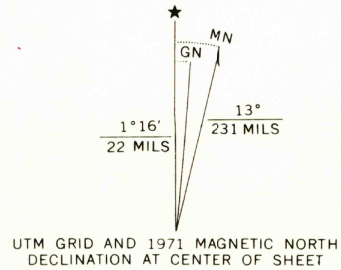
1000-meter Universal Transverse Mercator grid ticks,

zone 13, shown in blue

Revisions shown in purple compiled from aerial photographs

taken 1971. This information not field checked

Purple tint indicates extension of urban areas



CONTOUR INTERVAL 10 FEET
DATUM IS MEAN SEA LEVEL

THIS MAP COMPLIES WITH NATIONAL MAP ACCURACY STANDARDS
FOR SALE BY U.S. GEOLOGICAL SURVEY, DENVER, COLORADO 80225, OR WASHINGTON, D. C. 20242
A FOLDER DESCRIBING TOPOGRAPHIC MAPS AND SYMBOLS IS AVAILABLE ON REQUEST

ROAD CLASSIFICATION		
Heavy-duty	4 LANE 6 LANE	Light duty
Medium-duty	4 LANE 6 LANE	Unimproved dirt
U. S. Route		State Route
Interstate Route		



RAPID CITY EAST, S. DAK.
N 4400—W 10307.5/7.5

1953
PHOTOREVISED 1971
AMS 5372 II SW—SERIES V873

USGS
HISTORICAL FILE
TOPOGRAPHIC DIVISION