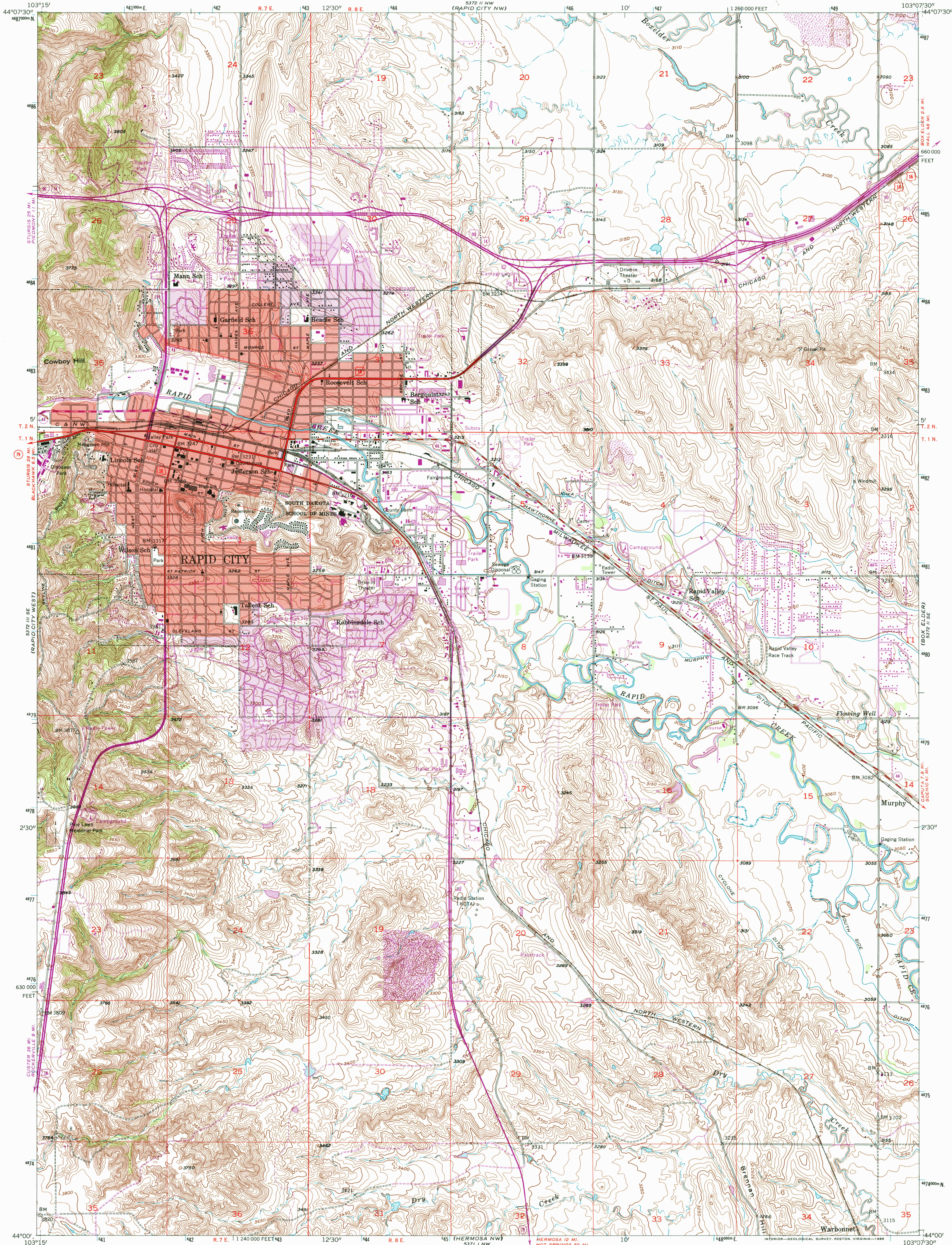


UNITED STATES
DEPARTMENT OF THE INTERIOR
GEOLOGICAL SURVEY

RAPID CITY EAST QUADRANGLE
SOUTH DAKOTA—PENNINGTON CO.
7.5 MINUTE SERIES (TOPOGRAPHIC)



Mapped, edited, and published by the Geological Survey

Control by USGS and USC&GS

Topography from aerial photographs by multiplex methods

Aerial photographs taken 1952. Field check 1953

Polycyclic projection. 1927 North American datum

10,000-foot grid based on South Dakota coordinate system,

south zone

Red tint indicates areas in which only

landmark buildings are shown

1000-meter Universal Transverse Mercator grid ticks,

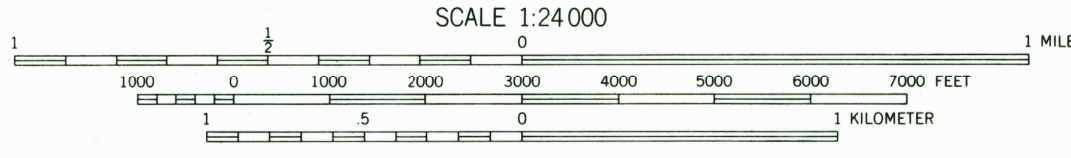
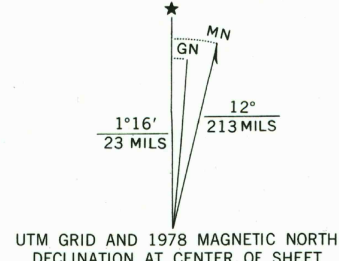
zone 13, shown in blue

Revisions shown in purple compiled from aerial photographs

taken 1976 and other source data. This information not

field checked. Map edited 1978

Purple tint indicates extension of urban areas



CONTOUR INTERVAL 10 FEET

NATIONAL GEODETIC VERTICAL DATUM OF 1929

THIS MAP COMPLIES WITH NATIONAL MAP ACCURACY STANDARDS
FOR SALE BY U. S. GEOLOGICAL SURVEY, DENVER, COLORADO 80225, OR RESTON, VIRGINIA 22092
A FOLDER DESCRIBING TOPOGRAPHIC MAPS AND SYMBOLS IS AVAILABLE ON REQUEST



QUADRANGLE LOCATION

To place on the predicted North American Datum 1983,
move the projection lines 6 meters north and
41 meters east as shown by dashed corner ticks

ROAD CLASSIFICATION

Primary highway, all weather, hard surface

Secondary highway, all weather, hard surface

Light-duty road, all weather, improved surface

Unimproved road, fair or dry weather

Interstate Route U. S. Route State Route

RAPID CITY EAST, S. DAK.

44103-A2-TF-024

1953

PHOTOREVISED 1978

DMA 5372 II SW—SERIES V873

RECEIVED

MAR 3 1 1999

USGS NMD
HISTORICAL MAP ARCHIVES

