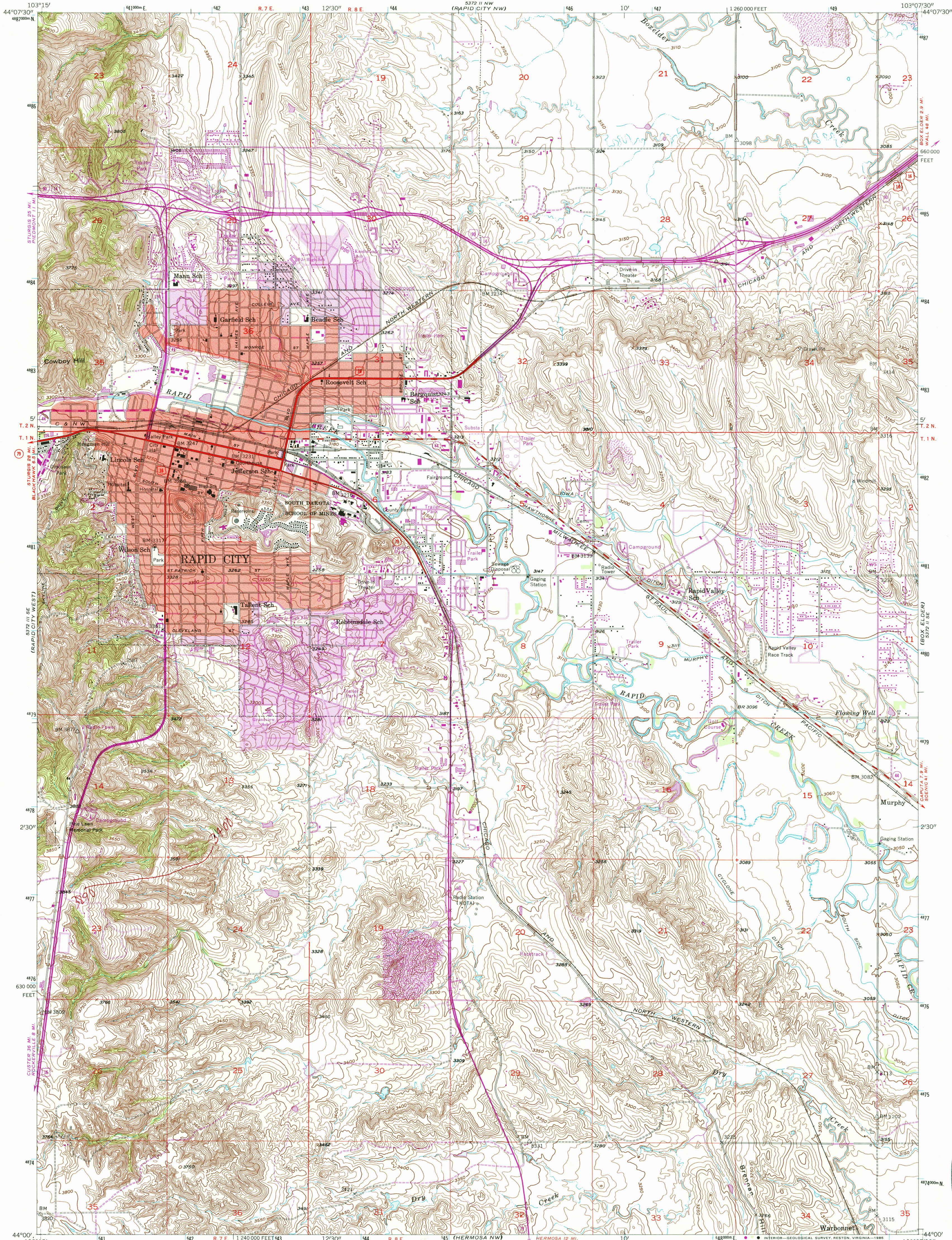


UNITED STATES
DEPARTMENT OF THE INTERIOR
GEOLOGICAL SURVEY

RAPID CITY EAST QUADRANGLE
SOUTH DAKOTA—PENNINGTON CO.
7.5 MINUTE SERIES (TOPOGRAPHIC)



Mapped, edited, and published by the Geological Survey

Control by USGS and USC&GS

Topography from aerial photographs by multiplex methods

Aerial photographs taken 1952. Field check 1953

Polyconic projection. 1927 North American datum

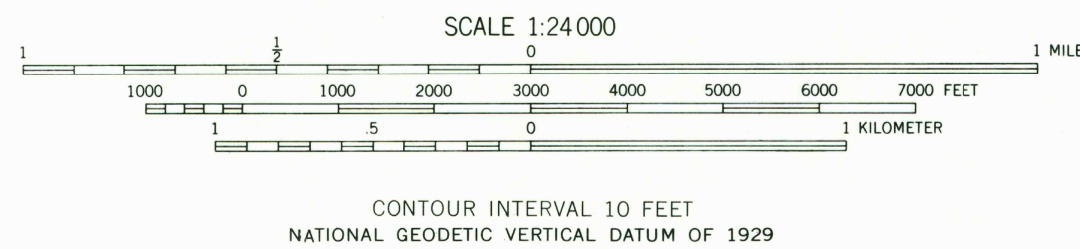
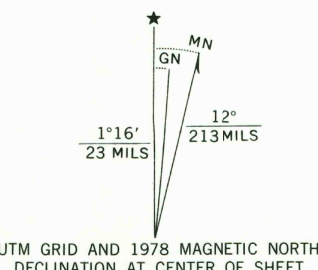
10,000-foot grid based on South Dakota coordinate system, south zone

Red tint indicates areas in which only landmark buildings are shown

1000-meter Universal Transverse Mercator grid ticks, zone 13, shown in blue

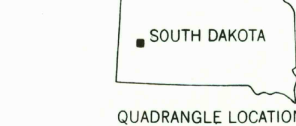
Revisions shown in purple compiled from aerial photographs taken 1976 and other source data. This information not field checked. Map edited 1978

Purple tint indicates extension of urban areas



THIS MAP COMPLIES WITH NATIONAL MAP ACCURACY STANDARDS
FOR SALE BY U. S. GEOLOGICAL SURVEY, DENVER, COLORADO 80225, OR RESTON, VIRGINIA 22092
A FOLDER DESCRIBING TOPOGRAPHIC MAPS AND SYMBOLS IS AVAILABLE ON REQUEST

ROAD CLASSIFICATION	
Primary highway, all weather, hard surface	Light-duty road, all weather, improved surface
Secondary highway, all weather, hard surface	Unimproved road, fair or dry weather
Interstate Route	U. S. Route
State Route	



RAPID CITY EAST, S. DAK.
44103-A2-TF-024

1953
PHOTOREVISED 1978
DMA 5372 II SW—SERIES V873

USGS NHD HISTORICAL MAP
APR 21 1986
REC'D FILE COPY