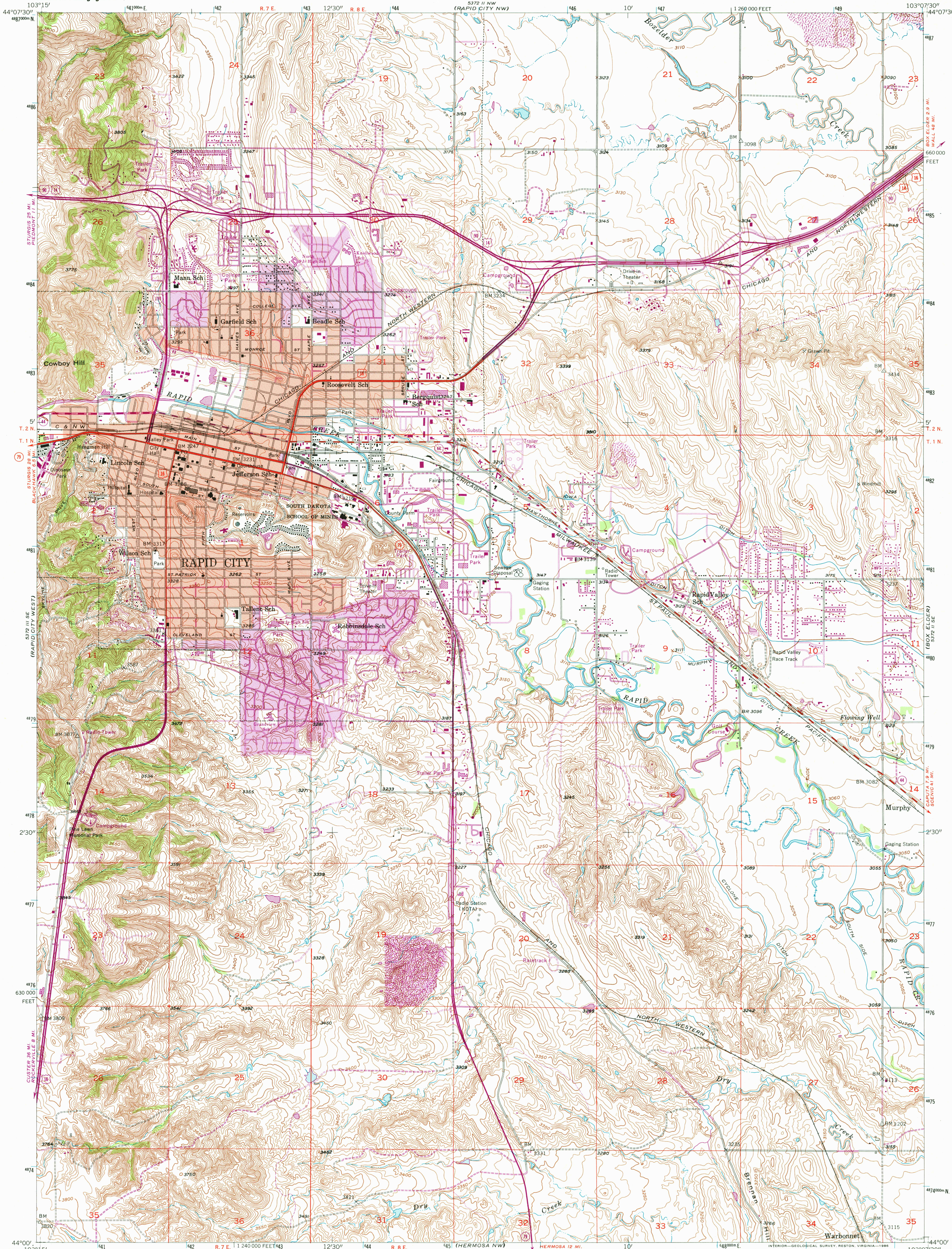




U.S. DEPARTMENT OF THE INTERIOR
U.S. GEOLOGICAL SURVEY

RAPID CITY EAST QUADRANGLE
SOUTH DAKOTA—PENNINGTON CO.
7.5 MINUTE SERIES (TOPOGRAPHIC)



Mapped, edited, and published by the Geological Survey

Control by USGS and USC&GS

Topography from aerial photographs by multiplex methods

Aerial photographs taken 1952. Field check 1953

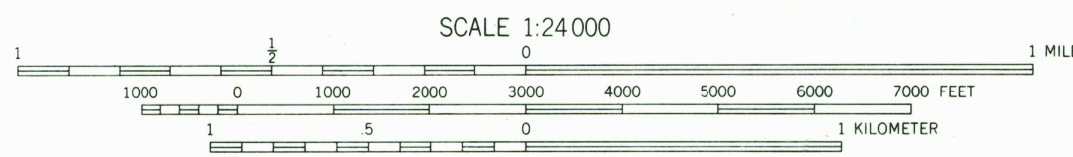
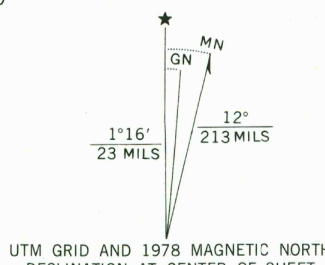
Polyconic projection. 1927 North American datum
10,000-foot grid based on South Dakota coordinate system,
south zone

Red tint indicates areas in which only
landmark buildings are shown

1000-meter Universal Transverse Mercator grid ticks,
zone 13, shown in blue

Revisions shown in purple compiled from aerial photographs
taken 1976 and other source data. This information not
field checked. Map edited 1978

Purple tint indicates extension of urban areas



CONTOUR INTERVAL 10 FEET
NATIONAL GEODETIC VERTICAL DATUM OF 1929

THIS MAP COMPLIES WITH NATIONAL MAP ACCURACY STANDARDS
FOR SALE BY U.S. GEOLOGICAL SURVEY, P.O. BOX 25286, DENVER, COLORADO 80225
A FOLDER DESCRIBING TOPOGRAPHIC MAPS AND SYMBOLS IS AVAILABLE ON REQUEST

To place on the predicted North American Datum 1983,
move the projection lines 6 meters north and
41 meters east as shown by dashed corner ticks



QUADRANGLE LOCATION

ROAD CLASSIFICATION	
Primary highway, all weather, hard surface	Light-duty road, all weather, improved surface
Secondary highway, all weather, hard surface	Unimproved road, fair or dry weather
Interstate Route	U. S. Route
	State Route

RAPID CITY EAST, S. DAK.
44103-A2-TF-024

1953
PHOTOREVISED 1978
DMA 5372 II SW—SERIES V873

APR 2 1 2003

USGS LIBRARY—RESTON

3 1818 00503665 0

USGS Library
Reston, VA.
Topo Archive