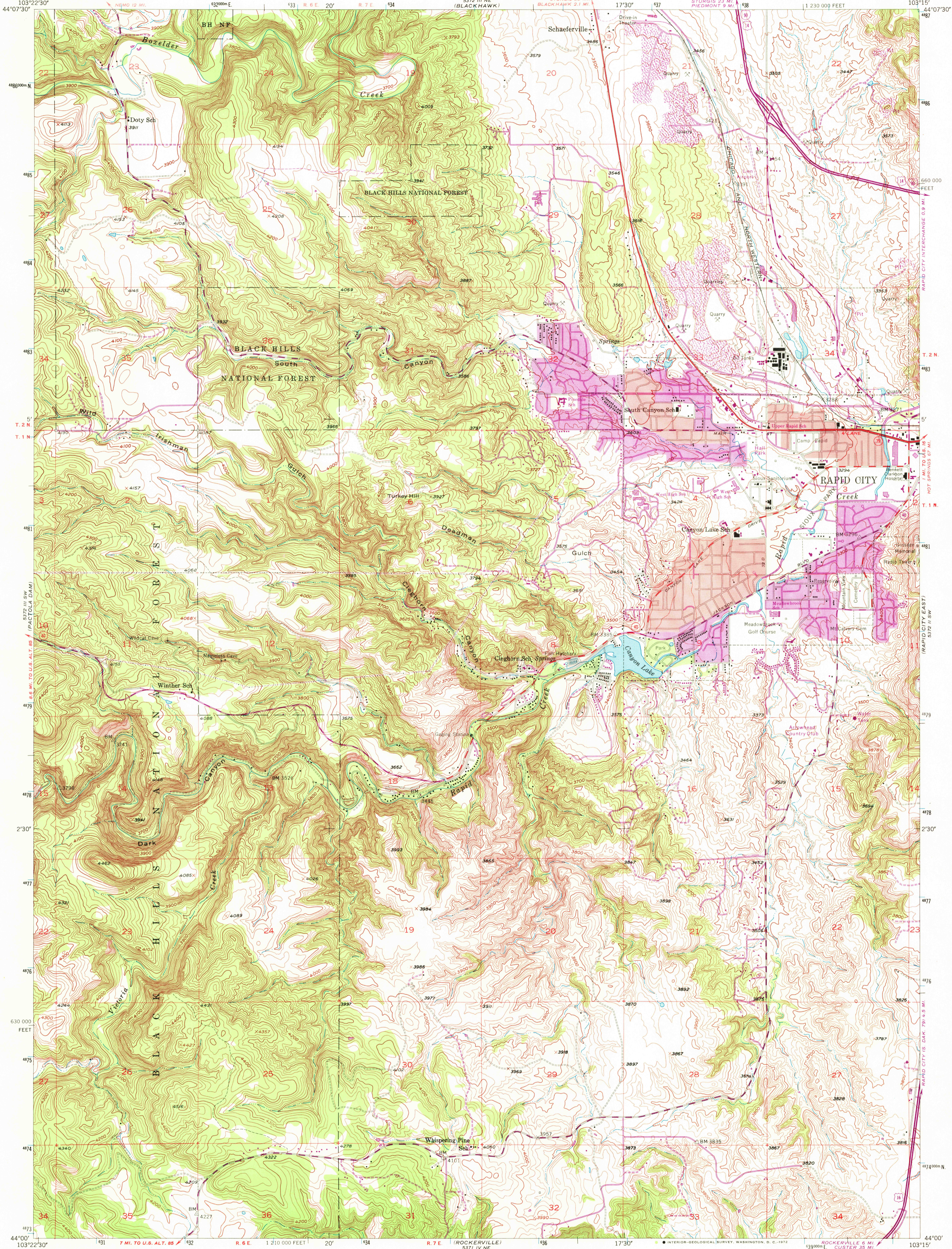
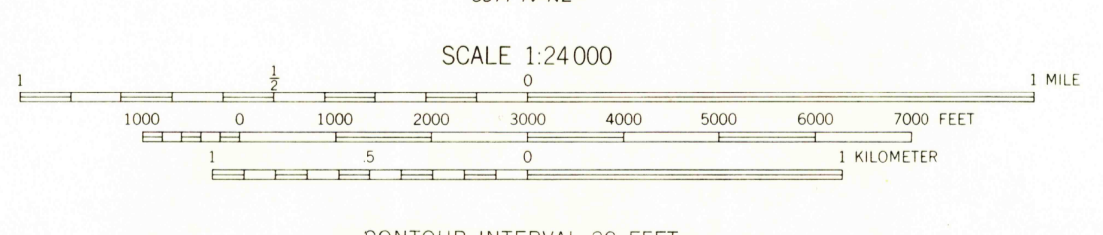
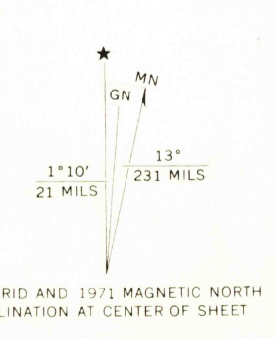


5372 III NW
(PIEDMONT)

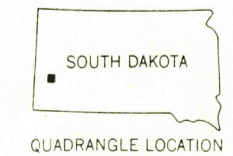
5372 III NW
(RAPID CITY NW)



Mapped, edited, and published by the Geological Survey
Control by USGS and USC&GS
Topography from aerial photographs by multiplex methods
Aerial photographs taken 1952. Field check 1953
Polyconic projection. 1927 North American datum
10,000-foot grid based on South Dakota coordinate system, south zone
Red tint indicates areas in which only landmark buildings are shown
Unchecked elevations are shown in brown
1000-meter Universal Transverse Mercator grid ticks, zone 13, shown in blue
Revisions shown in purple compiled from aerial photographs taken 1971. This information not field checked
Purple tint indicates extension of urban areas



CONTOUR INTERVAL 20 FEET
DATUM IS MEAN SEA LEVEL



ROAD CLASSIFICATION

Heavy-duty	4 LANE 6 LANE	Light-duty
Medium-duty	4 LANE 6 LANE	Unimproved dirt
U.S. Route		State Route
		Interstate Route

RAPID CITY WEST, S. DAK.
N4400-W10315/7.5

1953
PHOTOREVISED 1971
AMS 5372 III SE--SERIES V873

THIS MAP COMPLIES WITH NATIONAL MAP ACCURACY STANDARDS
FOR SALE BY U.S. GEOLOGICAL SURVEY, DENVER, COLORADO 80225 OR WASHINGTON, D. C. 20242
A FOLDER DESCRIBING TOPOGRAPHIC MAPS AND SYMBOLS IS AVAILABLE ON REQUEST

2805
MAY 19 1972

USGS
HISTORICAL FILE