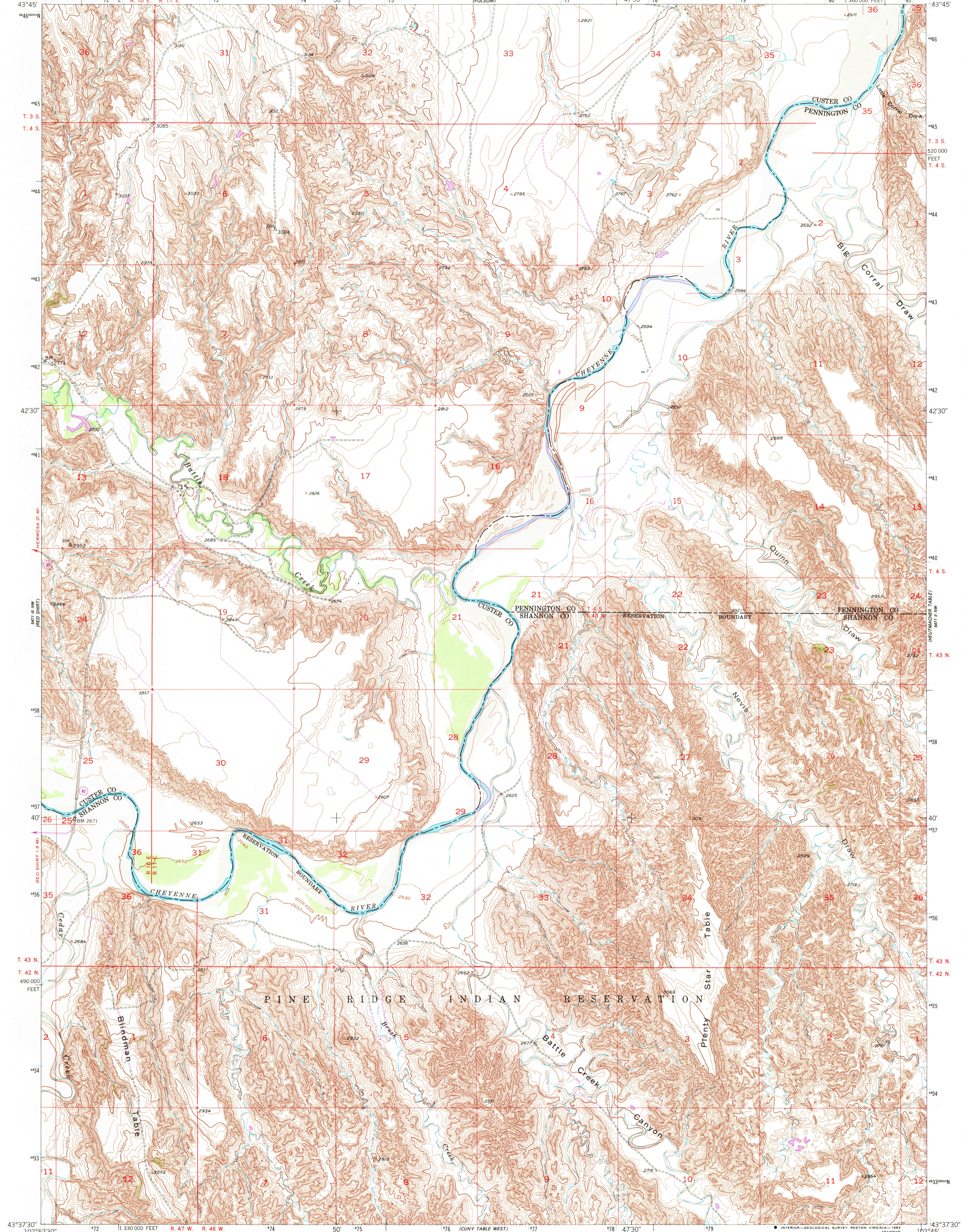
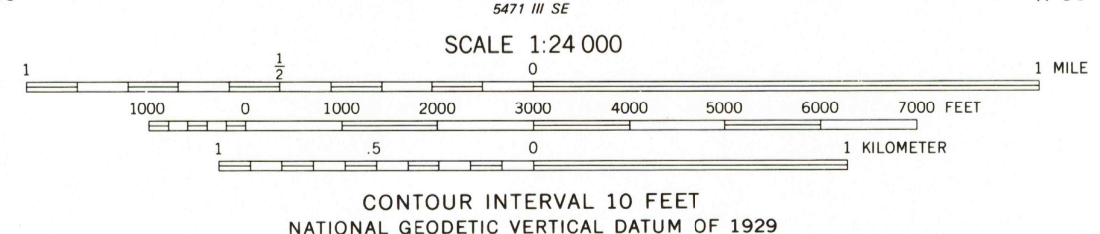
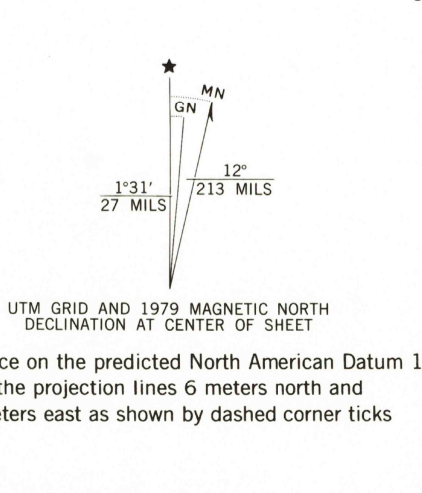


5471 IV SW
(CUSTER SW)

5471 IV SW
(CUSTER SW)



Mapped, edited, and published by the Geological Survey as part of the Department of the Interior program for the development of the Missouri River Basin. Control by USGS and USC&GS. Topography from aerial photographs by multiplex methods. Aerial photographs taken 1949. Field check 1951. Polyconic projection. 1927 North American datum. 10,000-foot grid based on South Dakota coordinate system, south zone. 1000-meter Universal Transverse Mercator grid ticks, zone 13, shown in blue. There may be private inholdings within the boundaries of the National or State reservations shown on this map. Revisions shown in purple compiled from aerial photographs taken 1976. Map edited 1979. This information not field checked.



THIS MAP COMPLIES WITH NATIONAL MAP ACCURACY STANDARDS FOR SALE BY U. S. GEOLOGICAL SURVEY, DENVER, COLORADO 80225 OR RESTON, VIRGINIA 22092. A FOLDER DESCRIBING TOPOGRAPHIC MAPS AND SYMBOLS IS AVAILABLE ON REQUEST.

ROAD CLASSIFICATION

Primary highway, hard surface	Light-duty road, hard or improved surface
Secondary highway, hard surface	Unimproved road
Interstate Route	U. S. Route
	State Route

SOUTH DAKOTA
QUADRANGLE LOCATION

RED SHIRT NE, S. DAK.
N4337.5-W10245/7.5
1951
PHOTOREVISED 1979
DMA 5471 III NE-SERIES V873

RETURN TO:
USGS AND HISTORICAL MAP ARCHIVES
7-15-84