

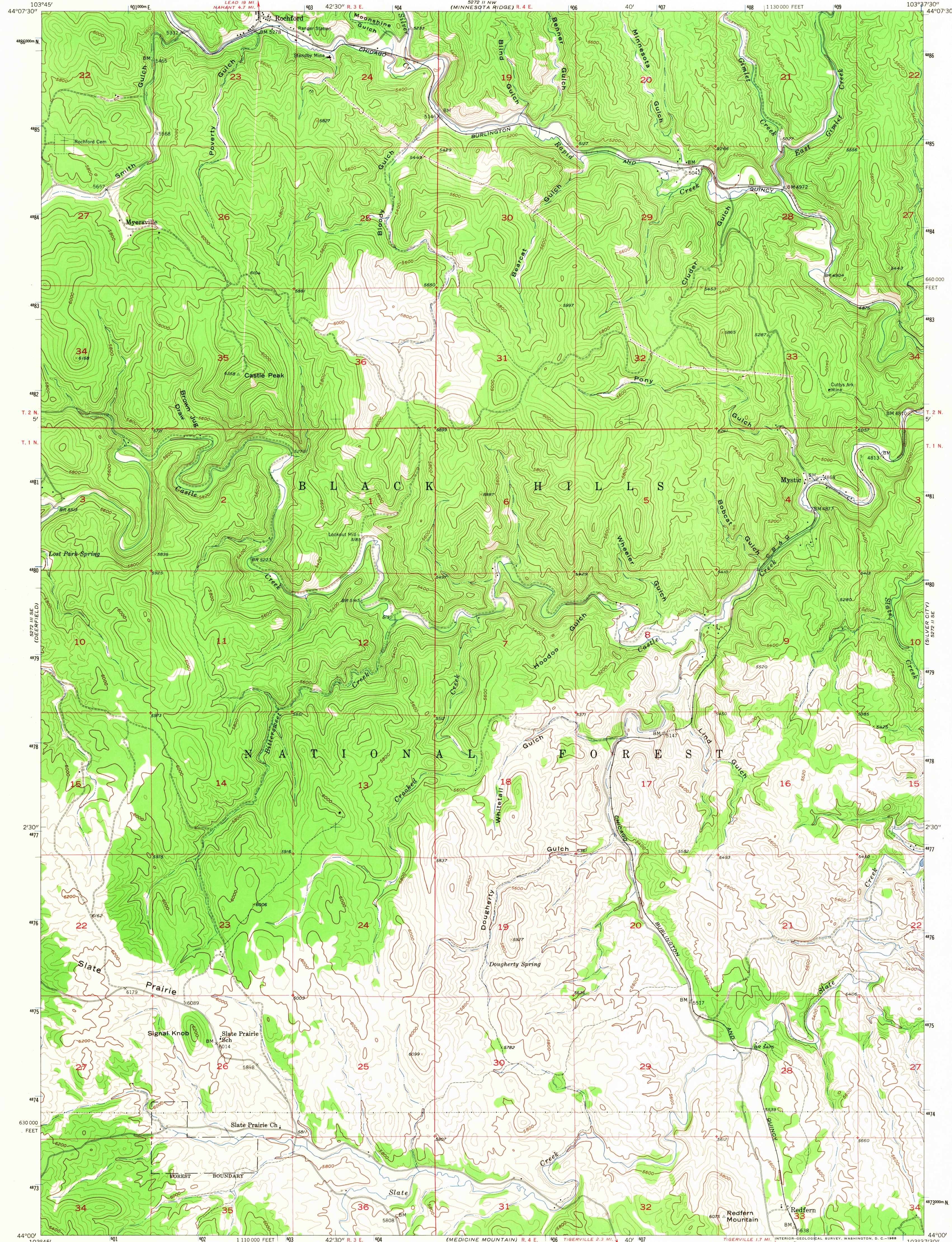
5272 II SW  
(NAD 83)

UNITED STATES  
DEPARTMENT OF THE INTERIOR  
GEOLOGICAL SURVEY

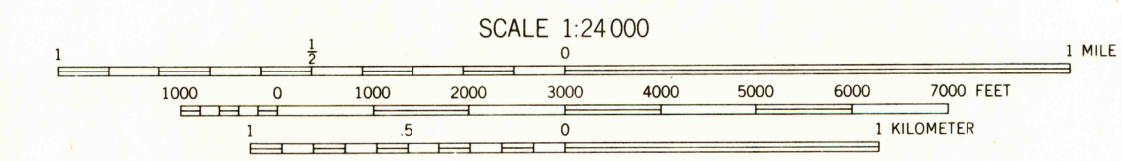
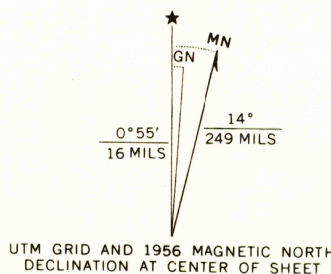
UNITED STATES  
ATOMIC ENERGY COMMISSION

ROCHFORD QUADRANGLE  
SOUTH DAKOTA—PENNINGTON CO.  
7.5 MINUTE SERIES (TOPOGRAPHIC)

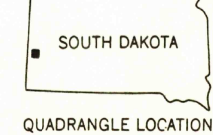
5272 II NE  
(NAD 83)



Mapped, edited, and published by the Geological Survey  
Control by USGS and USC&GS  
Topography from photographs by multiplex methods  
Aerial photographs taken 1954. Field check 1956  
Polyconic projection. 1927 North American datum  
10,000-foot grid based on South Dakota coordinate system,  
south zone  
1000-meter Universal Transverse Mercator grid ticks,  
zone 13, shown in blue



USGS  
HISTORICAL FILE  
TOPOGRAPHIC DIVISION



ROAD CLASSIFICATION  
Light-duty ————— Unimproved dirt —————

ROCHFORD, S. DAK.  
N4400—W10337.5/7.5

1956

AMS 5272 II SW—SERIES V873

THIS MAP COMPLIES WITH NATIONAL MAP ACCURACY STANDARDS  
FOR SALE BY U. S. GEOLOGICAL SURVEY, DENVER, COLORADO 80225 OR WASHINGTON, D. C. 20242  
A FOLDER DESCRIBING TOPOGRAPHIC MAPS AND SYMBOLS IS AVAILABLE ON REQUEST

U.S.G.S.  
FILE COPY  
TOPOGRAPHIC DIVISION

2305  
JUL 12 1968