

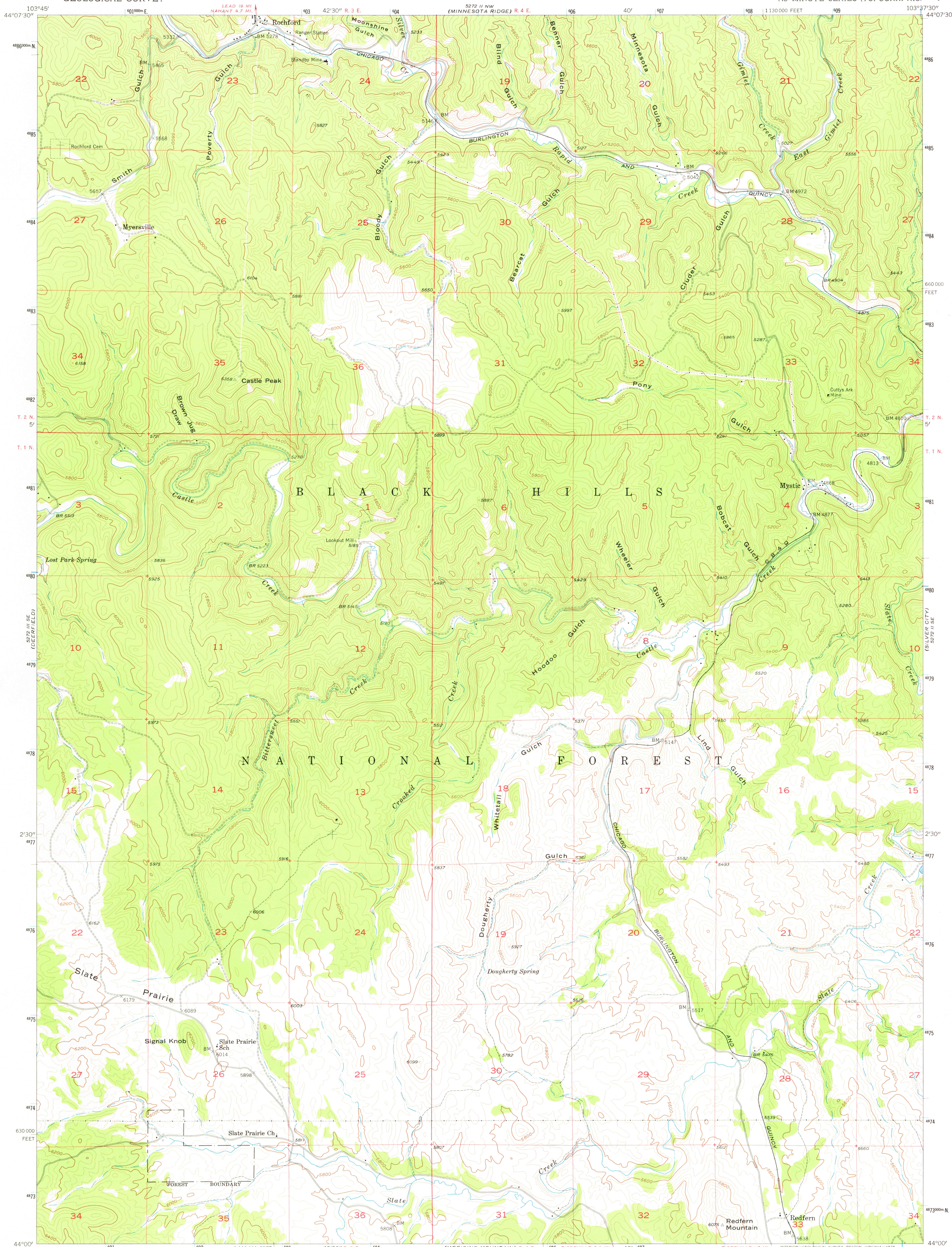
5272 II SW  
(NAD-83)

UNITED STATES  
DEPARTMENT OF THE INTERIOR  
GEOLOGICAL SURVEY

UNITED STATES  
ATOMIC ENERGY COMMISSION

ROCHFORD QUADRANGLE  
SOUTH DAKOTA—PENNINGTON CO.  
7.5 MINUTE SERIES (TOPOGRAPHIC)

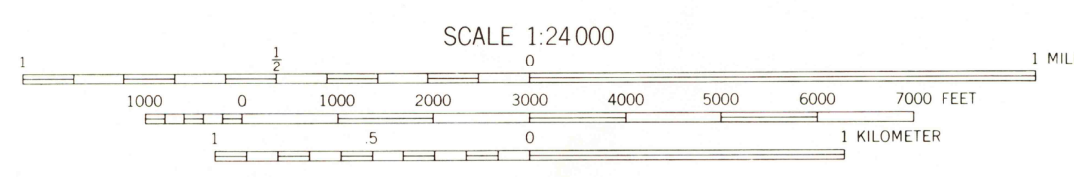
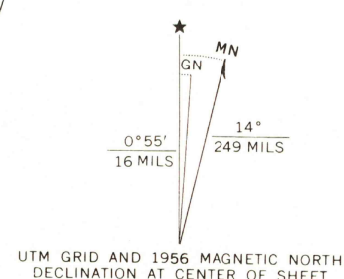
5272 II NE  
(NAD-83)



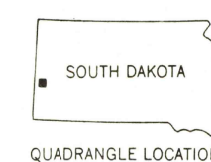
(DITCH CREEK)  
5271 I NE

Mapped, edited, and published by the Geological Survey

Control by USGS and USC&GS  
Topography from photographs by multiplex methods  
Aerial photographs taken 1954. Field check 1956  
Polyconic projection. 1927 North American datum  
10,000-foot grid based on South Dakota coordinate system,  
south zone  
1000-meter Universal Transverse Mercator grid ticks,  
zone 13, shown in blue



CONTOUR INTERVAL 40 FEET  
DATUM IS MEAN SEA LEVEL



ROAD CLASSIFICATION  
Light-duty Unimproved dirt

THIS MAP COMPLIES WITH NATIONAL MAP ACCURACY STANDARDS  
FOR SALE BY U. S. GEOLOGICAL SURVEY, DENVER, COLORADO 80225, OR RESTON, VIRGINIA 22092  
A FOLDER DESCRIBING TOPOGRAPHIC MAPS AND SYMBOLS IS AVAILABLE ON REQUEST

USGS  
Historical File  
Topographic Division

ROCHFORD, S. DAK.  
N 4400—W 10337.5/7.5

1956  
AMS 5272 II SW—SERIES V873

DEC 23 1976

3300