

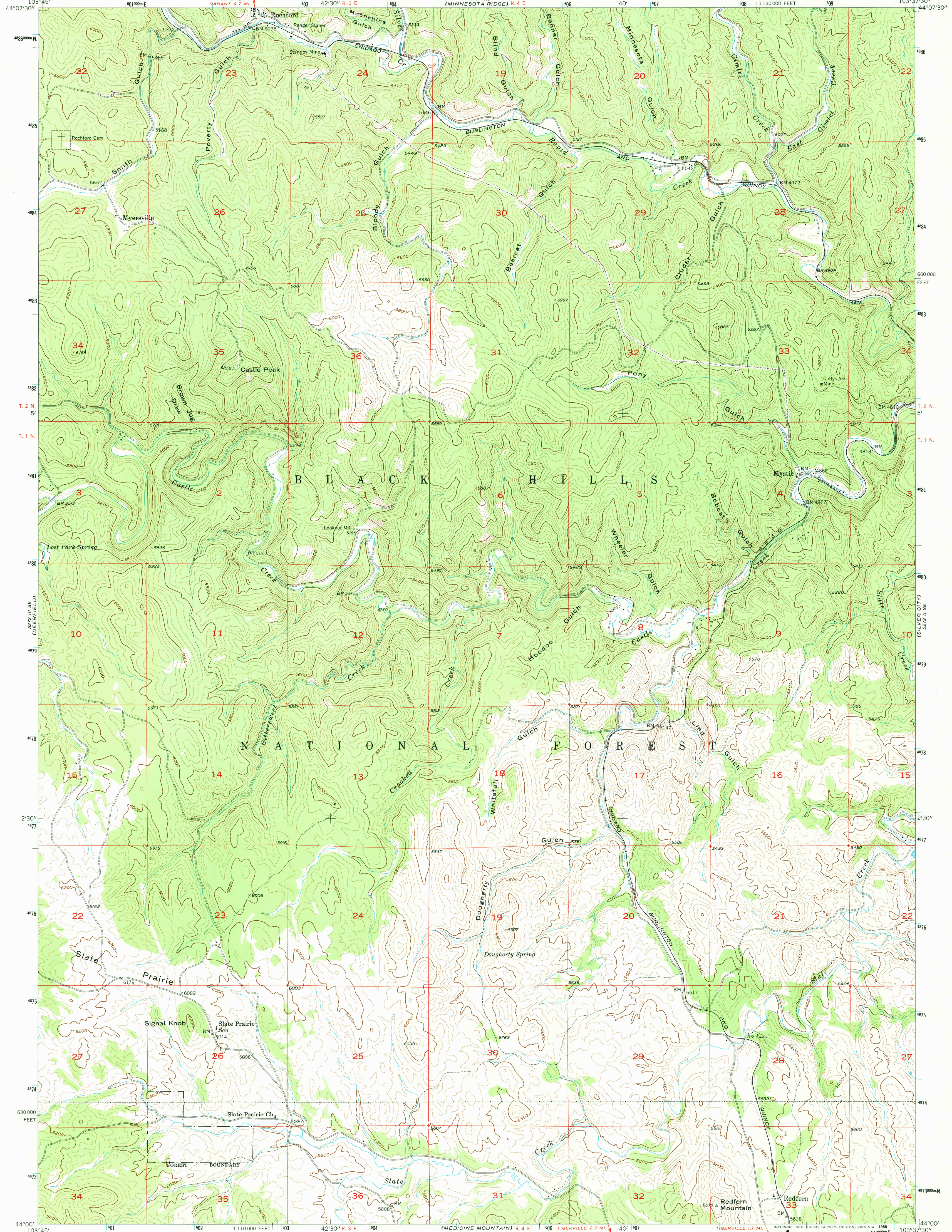
5272 II NW
(MINNESOTA RIDGE) R.4 E.

UNITED STATES
DEPARTMENT OF THE INTERIOR
GEOLOGICAL SURVEY

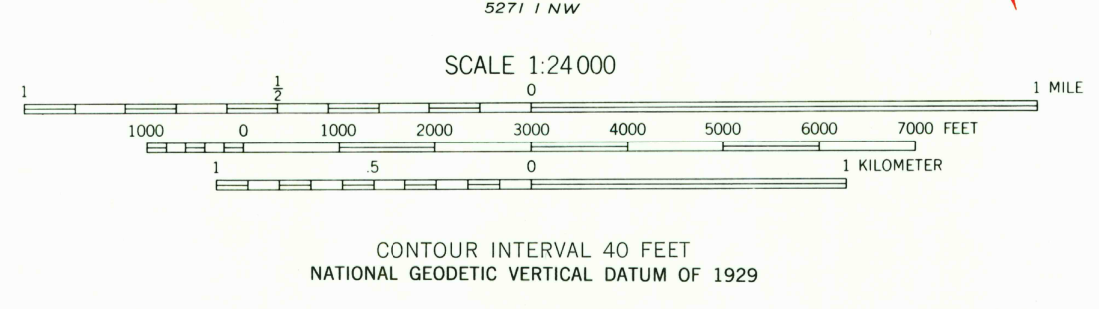
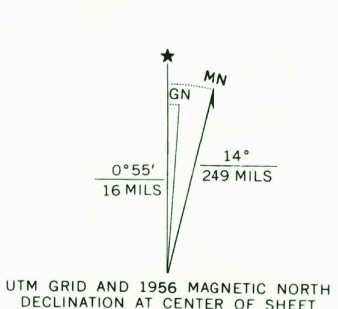
UNITED STATES
ATOMIC ENERGY COMMISSION

ROCHFORD QUADRANGLE
SOUTH DAKOTA—PENNINGTON CO.
7.5 MINUTE SERIES (TOPOGRAPHIC)

5272 II NE
(HILL CITY) R.4 E.



Mapped, edited, and published by the Geological Survey
Control by USGS and USC&GS
Topography from photographs by multiplex methods
Aerial photographs taken 1954. Field check 1956
Polyconic projection. 1927 North American datum
10,000-foot grid based on South Dakota coordinate system,
south zone
1000-meter Universal Transverse Mercator grid ticks,
zone 13, shown in blue
To place on the predicted North American Datum 1983
move the projection lines 6 meters north and
42 meters east as shown by dashed corner ticks
Map photoinspected 1977
No major culture or drainage changes observed



ROAD CLASSIFICATION
Light-duty ————— Unimproved dirt = - - - - -

ROCHFORD, S. DAK.
44103-A6-TF-024

1956
PHOTOINSPECTED 1977
DMA 5272 II SW—SERIES V873

USGS NMD HISTORICAL MAP
AUG 02 1988
REC'D FILE COPY