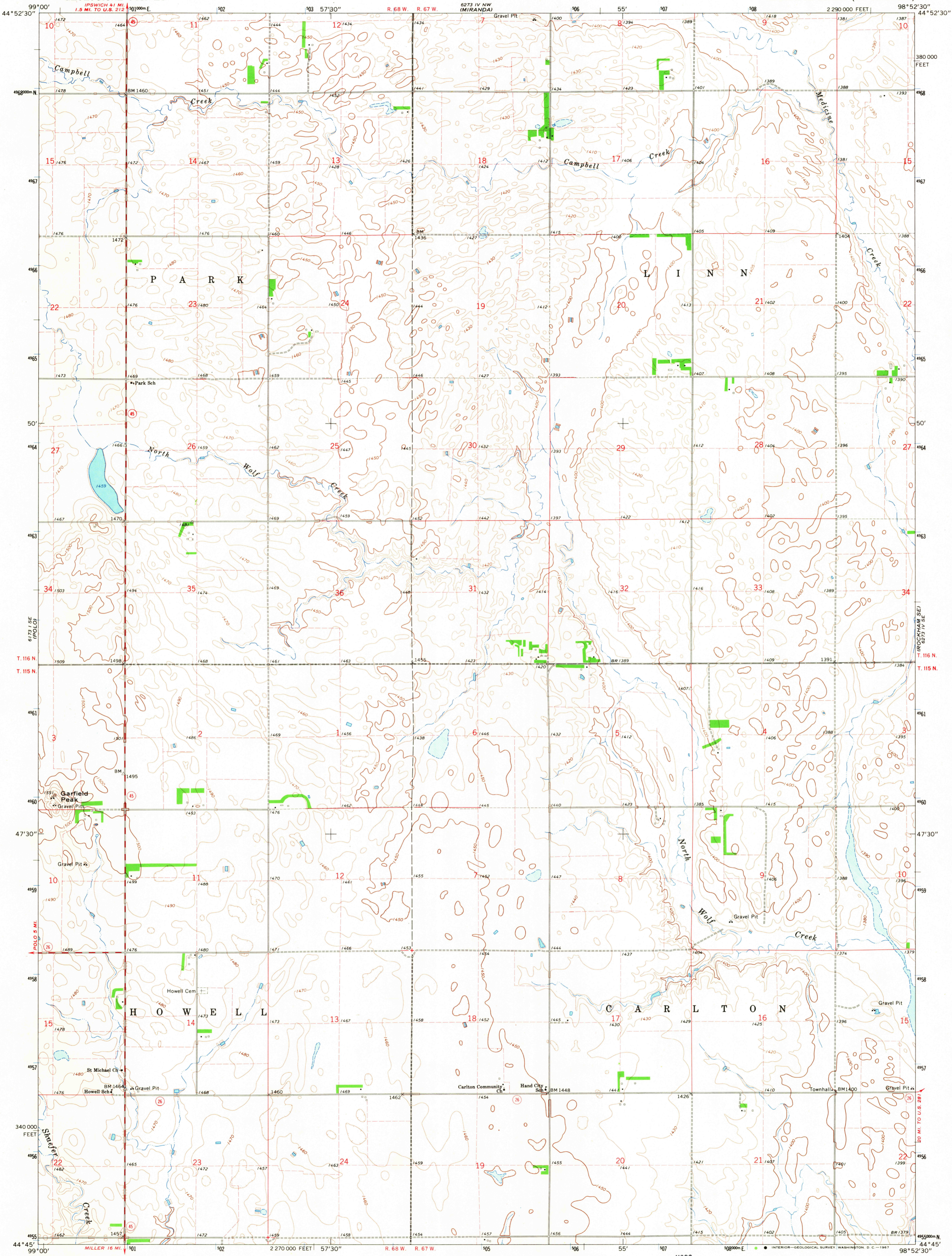
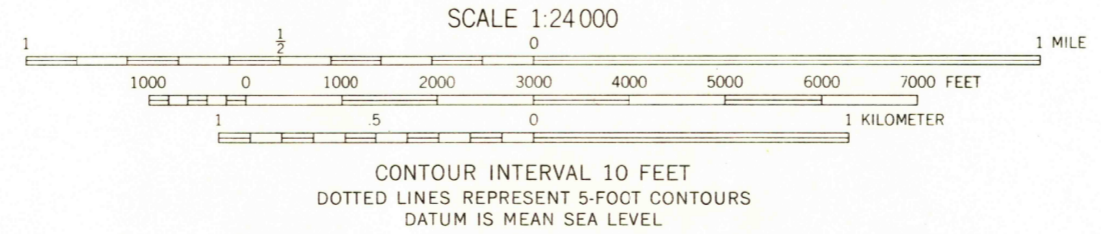
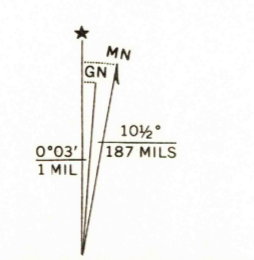


UNITED STATES  
DEPARTMENT OF THE INTERIOR  
GEOLOGICAL SURVEY

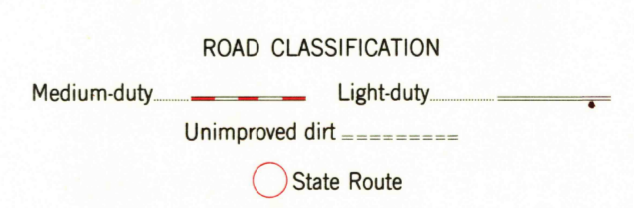
ROCKHAM SW QUADRANGLE  
SOUTH DAKOTA—HAND CO.  
7.5 MINUTE SERIES (TOPOGRAPHIC)



Mapped, edited, and published by the Geological Survey as part of the Department of the Interior program for the development of the Missouri River Basin Control by USGS, USC&GS, and U. S. Bureau of Reclamation. Topography by photogrammetric methods from aerial photographs taken 1964. Field checked 1966. Polyconic projection. 1927 North American datum 10,000-foot grid based on South Dakota coordinate system, north zone 1000-meter Universal Transverse Mercator grid ticks, zone 14, shown in blue. Fine red dashed lines indicate selected fence and field lines where generally visible on aerial photographs. This information is unchecked.



USGS  
HISTORICAL FILE  
TOPOGRAPHIC DIVISION



U.S.G.S.  
ROCKHAM SW, S. DAK.  
N4445—W9852.5/7.5  
1966  
AMS 6273 IV SW—SERIES V873

THIS MAP COMPLIES WITH NATIONAL MAP ACCURACY STANDARDS  
FOR SALE BY U. S. GEOLOGICAL SURVEY, DENVER, COLORADO 80225, OR WASHINGTON, D. C. 20242  
A FOLDER DESCRIBING TOPOGRAPHIC MAPS AND SYMBOLS IS AVAILABLE ON REQUEST

2735  
MAR 2 0 1968