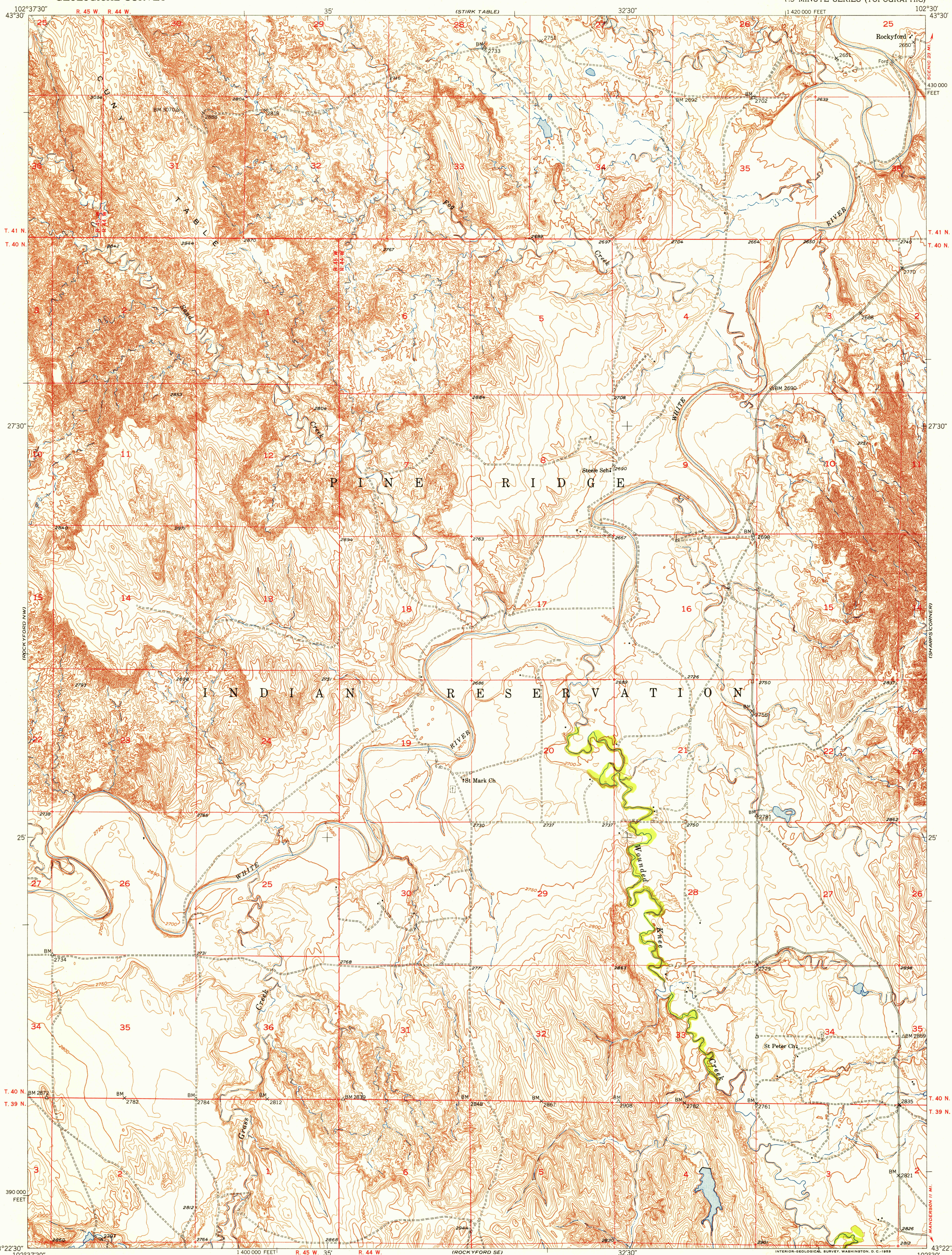
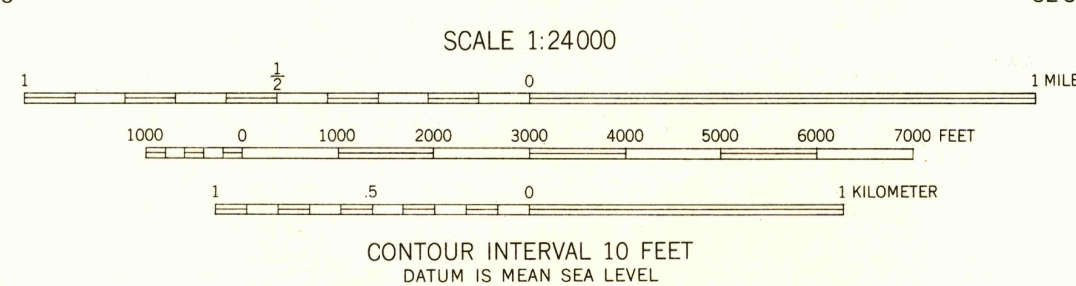


U. S. G. S.  
FILE COPY  
Inspection and Editings

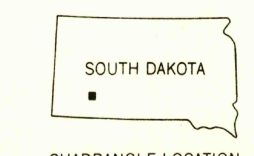


Mapped, edited, and published by the Geological Survey as part of the Department of the Interior program for the development of the Missouri River Basin  
Control by USGS and USC&GS  
Topography from aerial photographs by photogrammetric methods  
Aerial photographs taken 1948. Field check 1951  
Polyconic projection. 1927 North American datum  
10,000-foot grid based on South Dakota coordinate system, south zone



USGS  
HISTORICAL FILE  
TOPOGRAPHIC DIVISION

ROAD CLASSIFICATION  
Heavy-duty 4 LANE 6 LANE Light-duty  
Medium-duty 4 LANE 6 LANE Unimproved dirt  
U. S. Route State Route



ROCKYFORD, S. DAK.  
N4322.5-W10230/7.5

1951

U. S. G. S.  
FILE COPY  
Inspection and Editings

THIS MAP COMPLIES WITH NATIONAL MAP ACCURACY STANDARDS  
FOR SALE BY U. S. GEOLOGICAL SURVEY, FEDERAL CENTER, DENVER, COLORADO OR WASHINGTON 25, D. C.  
A FOLDER DESCRIBING TOPOGRAPHIC MAPS AND SYMBOLS IS AVAILABLE ON REQUEST

JUN 2 1953  
2645