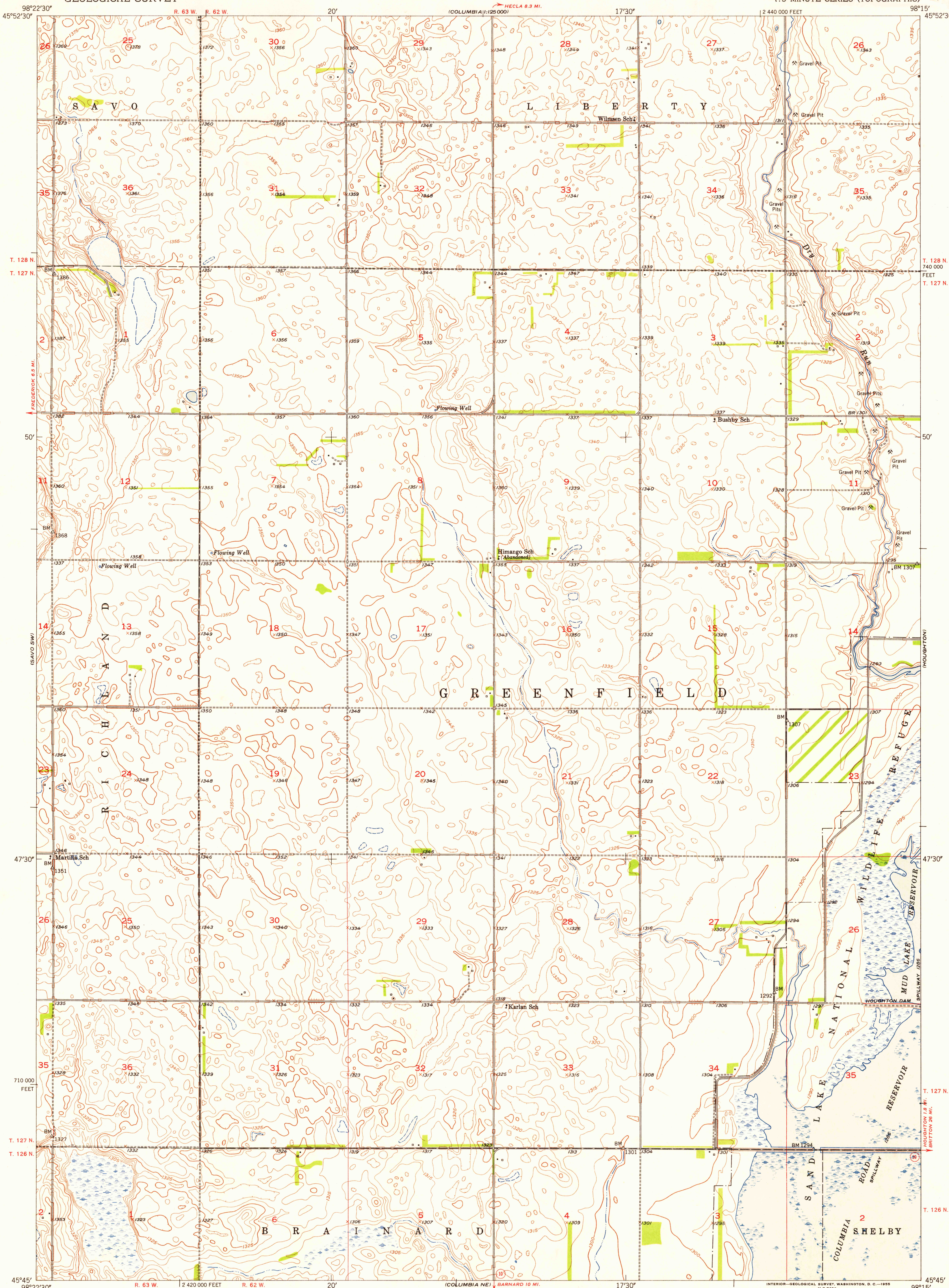
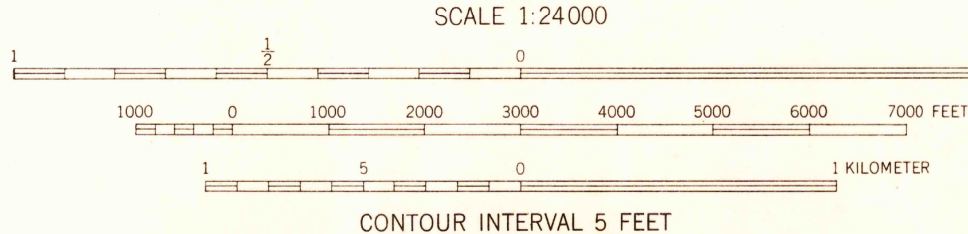
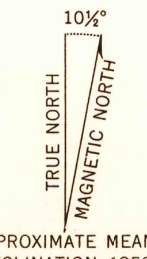


U.S.G.S.
FILE COPY
TOPOGRAPHIC DIVISION

U.S.G.S.
FILE COPY
TOPOGRAPHIC DIVISION



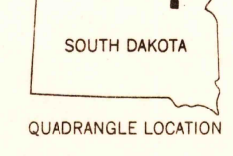
Mapped, edited, and published by the Geological Survey as part of the Department of the Interior program for the development of the Missouri River Basin
Control by USGS and USO&GS
Culture and drainage in part compiled from aerial photographs taken 1951. Topography by plane-table surveys 1953
Polyconic projection. 1927 North American datum
10,000-foot grid based on South Dakota coordinate system, north zone



USGS HISTORICAL FILE TOPOGRAPHIC DIVISION

ROAD CLASSIFICATION	
Heavy-duty	4 LANE 6 LANE
Medium-duty	2 LANE 4 LANE
Light-duty	Unimproved dirt

U. S. Route State Route



SAVO SE, S. DAK.
N4545-W9815/7.5
1953

THIS MAP COMPLIES WITH NATIONAL MAP ACCURACY STANDARDS
FOR SALE BY U. S. GEOLOGICAL SURVEY, FEDERAL CENTER, DENVER, COLORADO OR WASHINGTON 25, D. C.
A FOLDER DESCRIBING TOPOGRAPHIC MAPS AND SYMBOLS IS AVAILABLE ON REQUEST