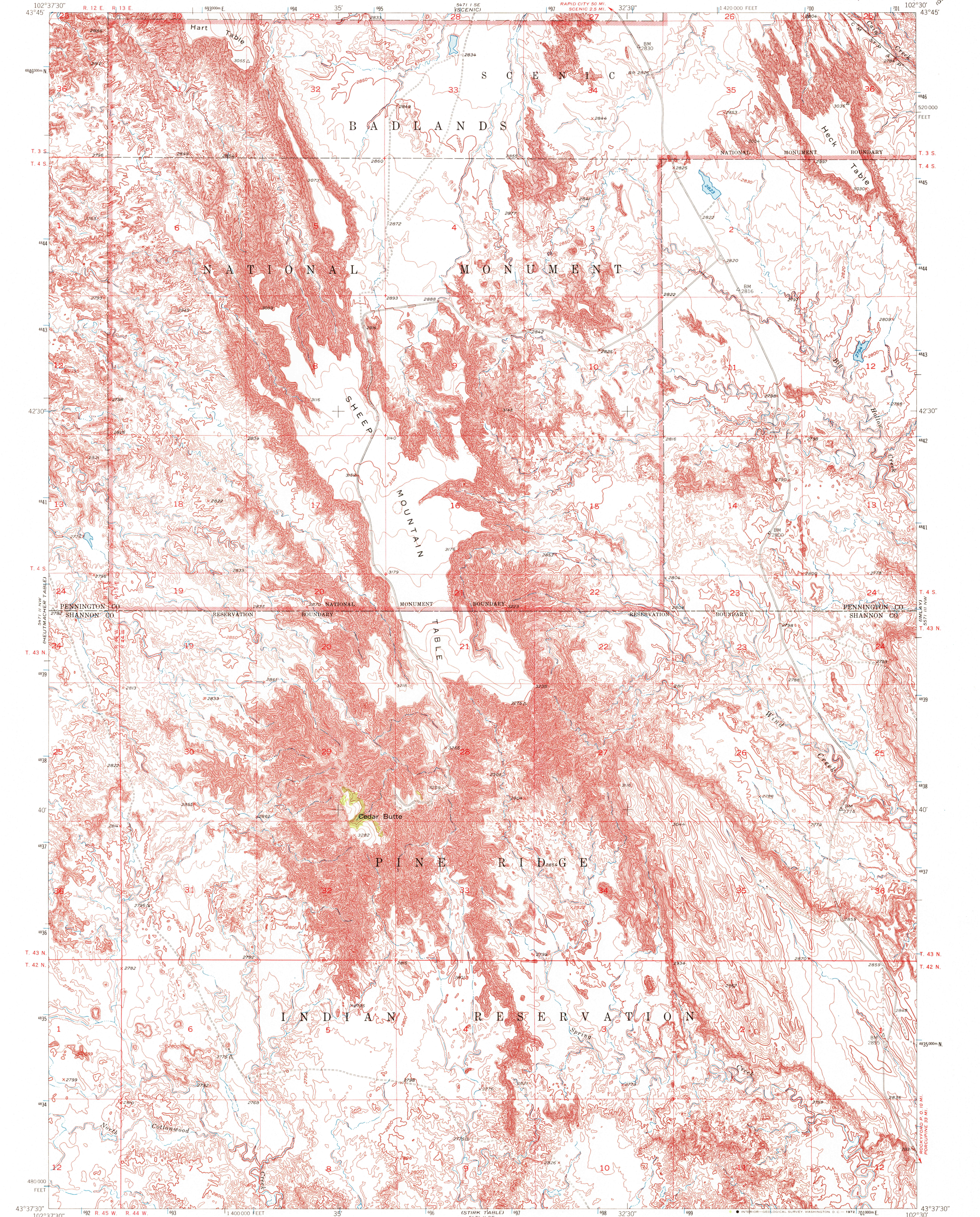
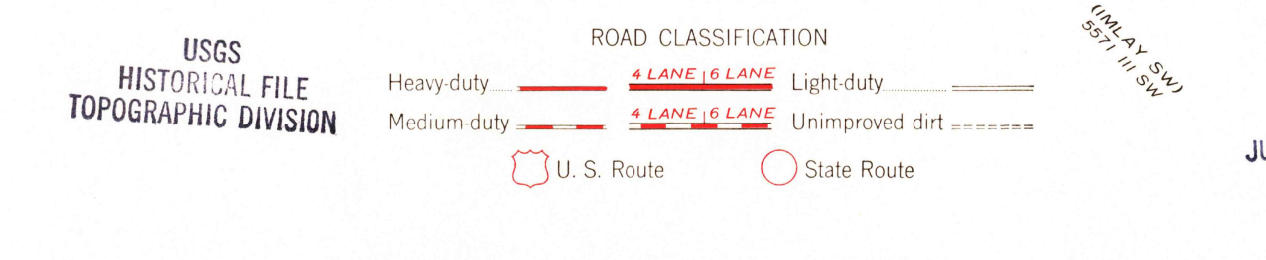
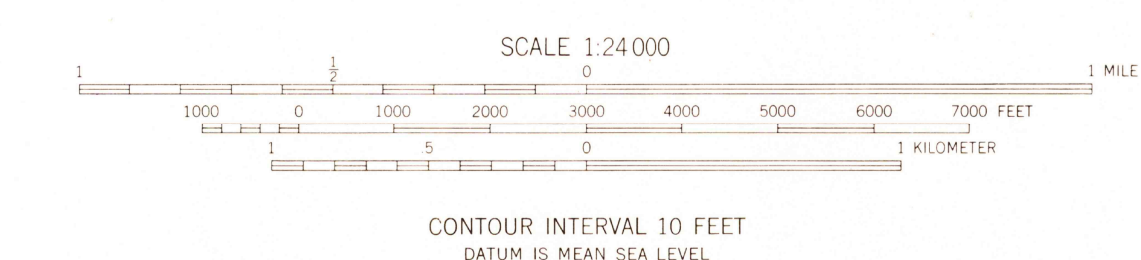
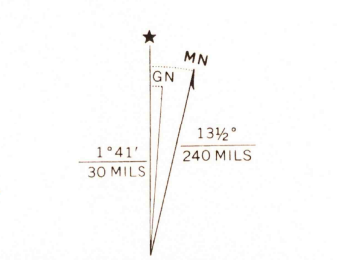


UNITED STATES  
DEPARTMENT OF THE INTERIOR  
GEOLOGICAL SURVEY

SHEEP MOUNTAIN TABLE QUADRANGLE  
SOUTH DAKOTA  
7.5 MINUTE SERIES (TOPOGRAPHIC)



Mapped, edited, and published by the Geological Survey as part of the Department of the Interior program for the development of the Missouri River Basin Control by USGS and USC&GS  
Topography from aerial photographs by multiplex methods  
Aerial photographs taken 1949. Field check 1950  
Polyconic projection. 1927 North American datum  
10,000-foot grid based on South Dakota coordinate system, south zone  
Unchecked elevations are shown in brown  
1000-meter Universal Transverse Mercator grid ticks, zone 13, shown in blue



THIS MAP COMPLIES WITH NATIONAL MAP ACCURACY STANDARDS  
FOR SALE BY U. S. GEOLOGICAL SURVEY, DENVER, COLORADO 80225 OR WASHINGTON, D. C. 20242  
A FOLDER DESCRIBING TOPOGRAPHIC MAPS AND SYMBOLS IS AVAILABLE ON REQUEST

SHEEP MOUNTAIN TABLE, S. DAK.  
N4337.5-W10230/7.5  
1950  
AMS 5471 II NE-SERIES V873

JUL 3 1972  
9165  
USGS  
HISTORICAL FILE  
TOPOGRAPHIC DIVISION