

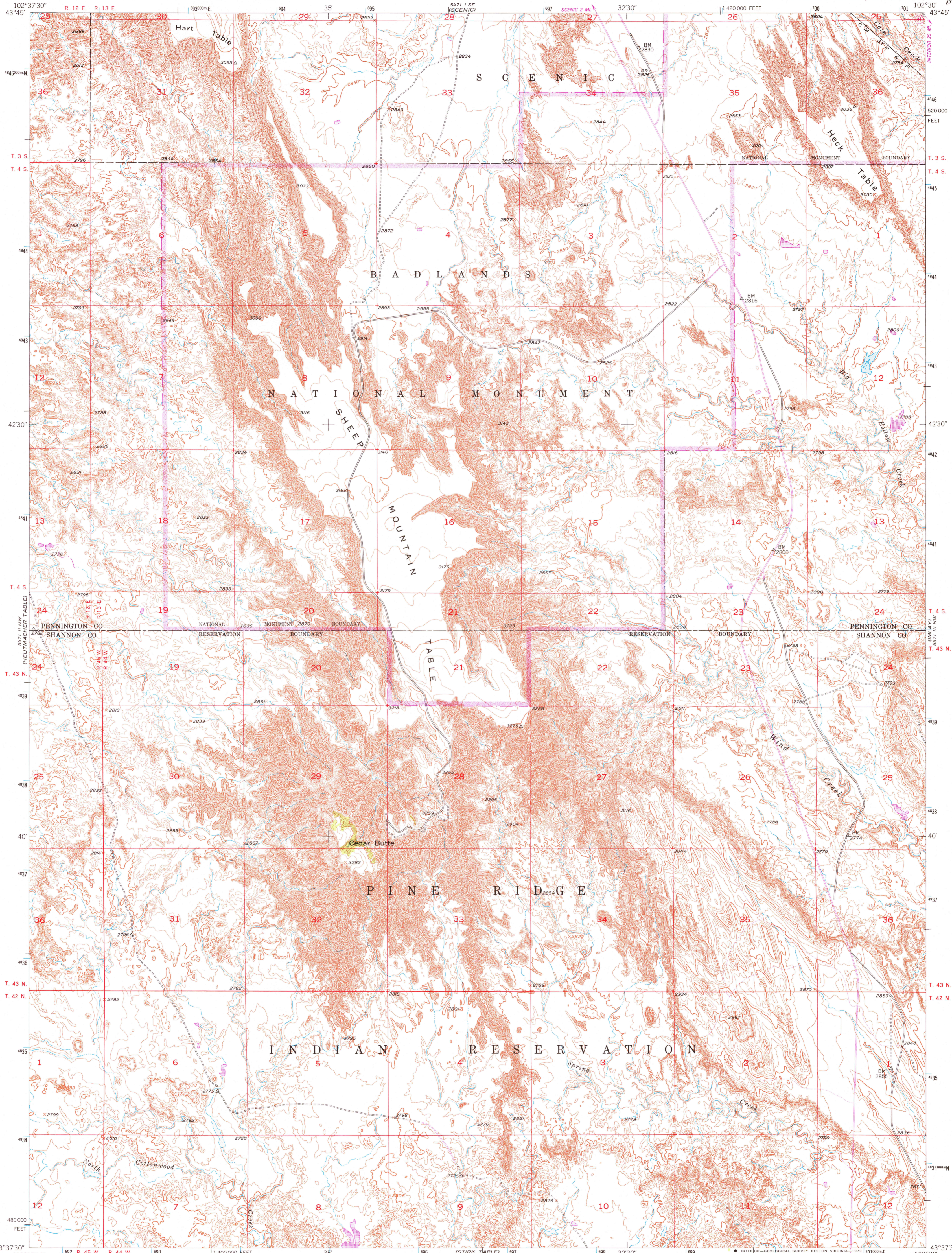
5471 1 SW
SCENIC SW

UNITED STATES
DEPARTMENT OF THE INTERIOR
GEOLOGICAL SURVEY

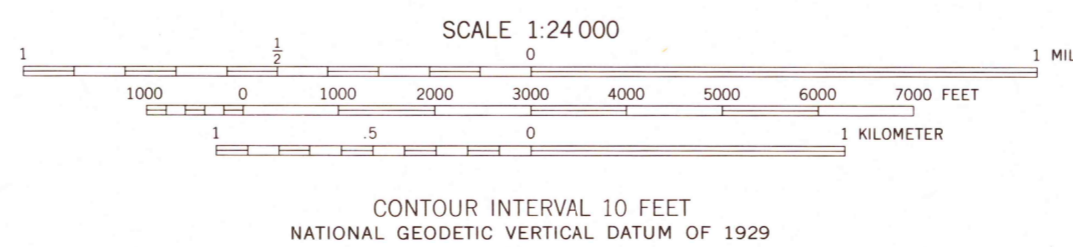
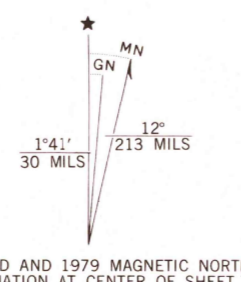


SHEEP MOUNTAIN TABLE QUADRANGLE
SOUTH DAKOTA
7.5 MINUTE SERIES (TOPOGRAPHIC)

5471 1 SW
SCENIC SW



Mapped, edited, and published by the Geological Survey as part of the Department of the Interior program for the development of the Missouri River Basin Control by USGS and USCG&S
Topography from aerial photographs by multiplex methods Aerial photographs taken 1949. Field check 1950
Polyconic projection. 1927 North American datum 10,000-foot grid based on South Dakota coordinate system, south zone
Unchecked elevations are shown in brown
1000-meter Universal Transverse Mercator grid ticks, zone 13, shown in blue
There may be private inholdings within the boundaries of the National or State reservations shown on this map



ROAD CLASSIFICATION
Heavy-duty 4 LANE 16 LANE Light-duty
Medium-duty 4 LANE 16 LANE Unimproved dirt
USGS Historical File Topographic Division
U.S. Route
Slate Route



SHEEP MOUNTAIN TABLE, S. DAK.
N4337.5-W10230/7.5

1950
PHOTOREVISED 1979
DMA 5471 11 NE-SERIES V873

THIS MAP COMPLIES WITH NATIONAL MAP ACCURACY STANDARDS
FOR SALE BY U.S. GEOLOGICAL SURVEY, DENVER, COLORADO 80225, OR RESTON, VIRGINIA 22092
A FOLDER DESCRIBING TOPOGRAPHIC MAPS AND SYMBOLS IS AVAILABLE ON REQUEST

Revisions shown in purple compiled from aerial photographs taken 1976. Map edited 1979
This information not field checked

SEP 17 1979

4450