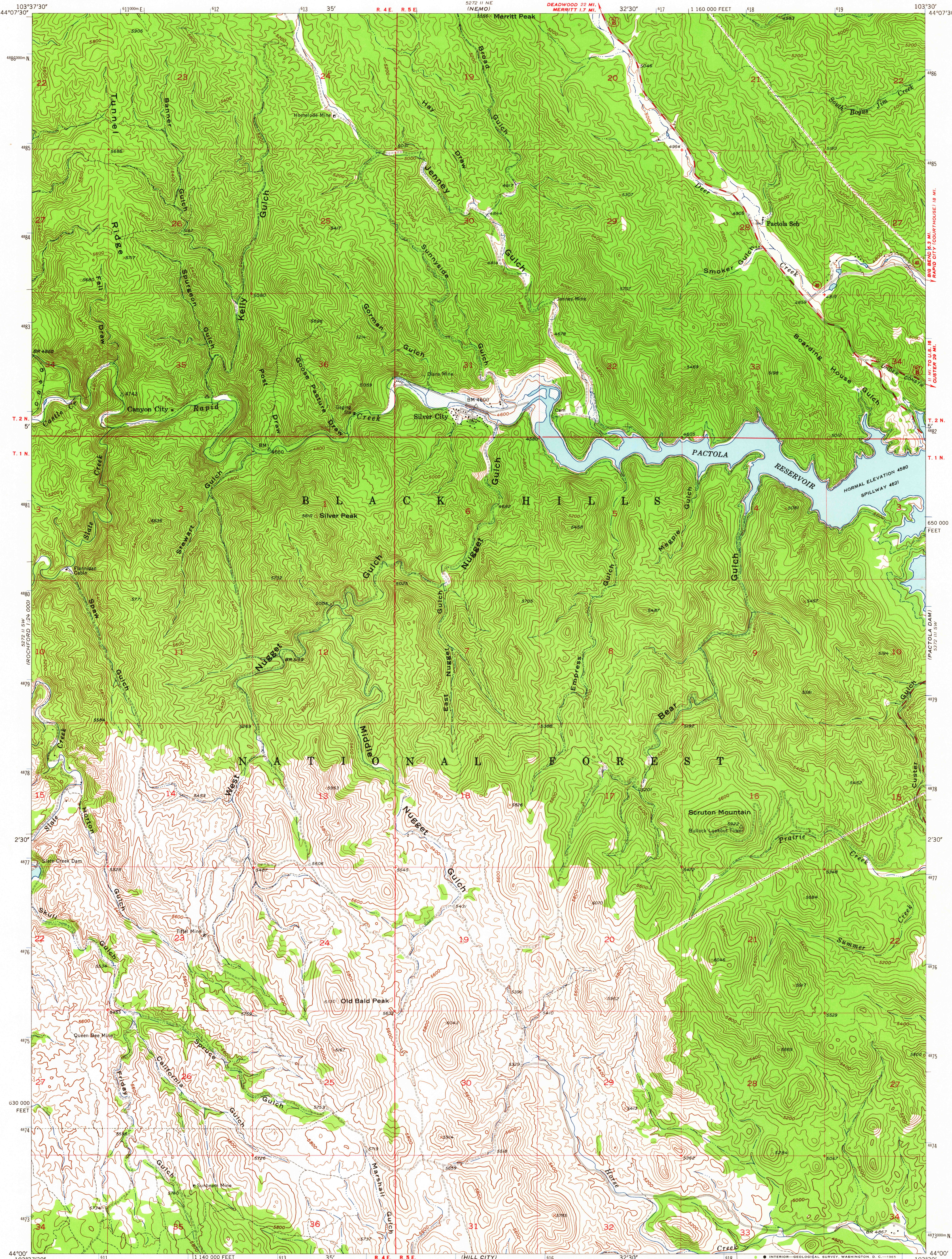
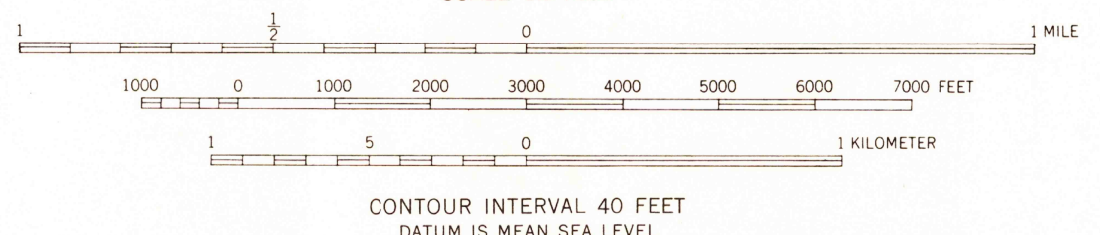


UNITED STATES
DEPARTMENT OF THE INTERIOR
GEOLOGICAL SURVEY

SILVER CITY QUADRANGLE
SOUTH DAKOTA-PENNINGTON CO.
7.5 MINUTE SERIES (TOPOGRAPHIC)



Mapped, edited, and published by the Geological Survey
Control by USGS and USC&GS
Topography from aerial photographs by multiplex methods
Aerial photographs taken 1952. Field check 1953-1954
Polyconic projection. 1927 North American datum
10,000-foot grid based on South Dakota coordinate system,
south zone
Broken light-blue lines indicate areas
subject to controlled inundation
1000-meter Universal Transverse Mercator grid ticks,
zone 13, shown in blue



USGS
HISTORICAL FILE
TOPOGRAPHIC DIVISION

ROAD CLASSIFICATION

Heavy-duty	FLAME ISLAND	Light-duty
Medium-duty	FLAME ISLAND	Unimproved dirt

U. S. Route State Route



U.S.G.S. SILVER CITY, S. DAK.
N4400-W10330/7.5
1954
MS 5272 II SE-SERIES V873

THIS MAP COMPLIES WITH NATIONAL MAP ACCURACY STANDARDS
FOR SALE BY U. S. GEOLOGICAL SURVEY, DENVER, COLORADO 80225, OR WASHINGTON, D. C. 20242
A FOLDER DESCRIBING TOPOGRAPHIC MAPS AND SYMBOLS IS AVAILABLE ON REQUEST

JUN 2 1965