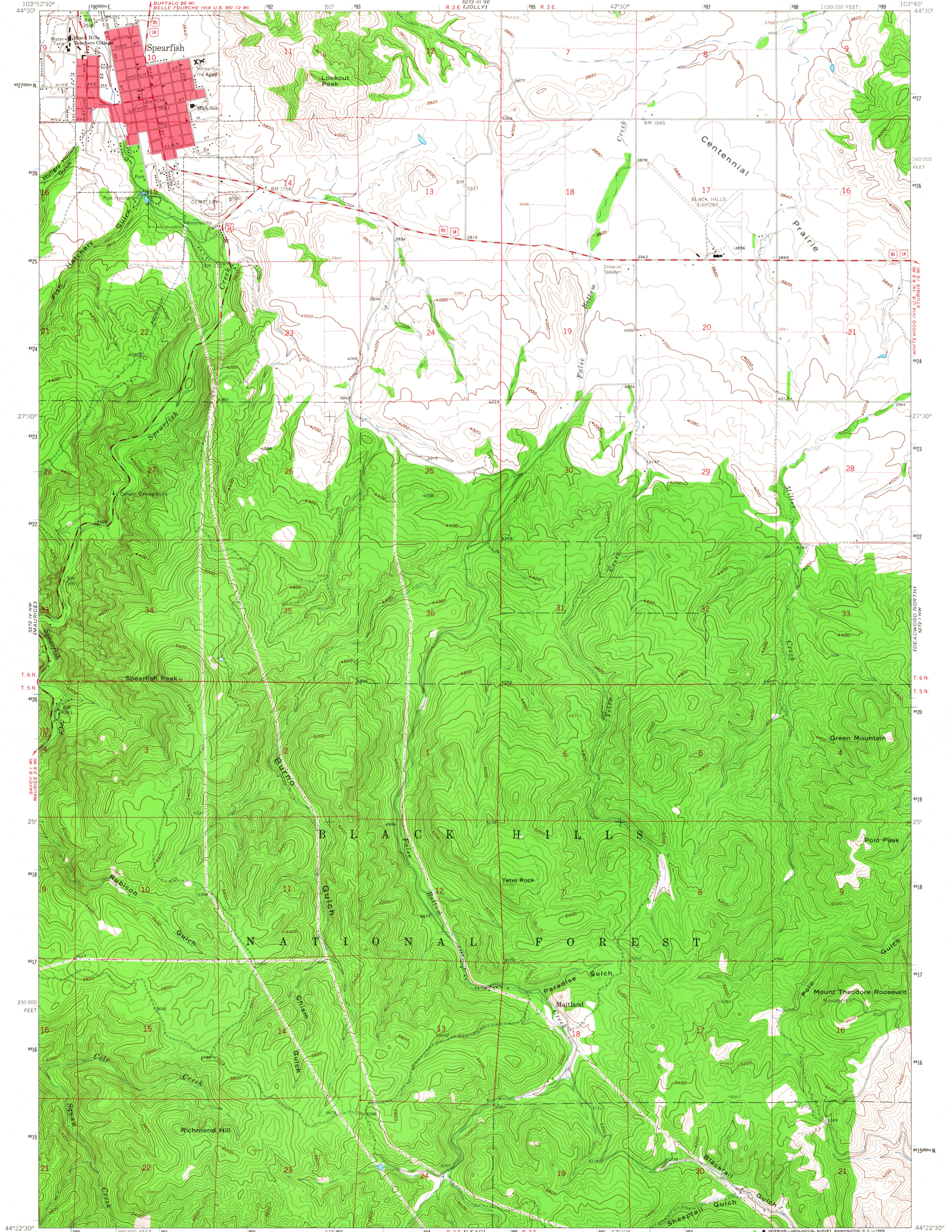
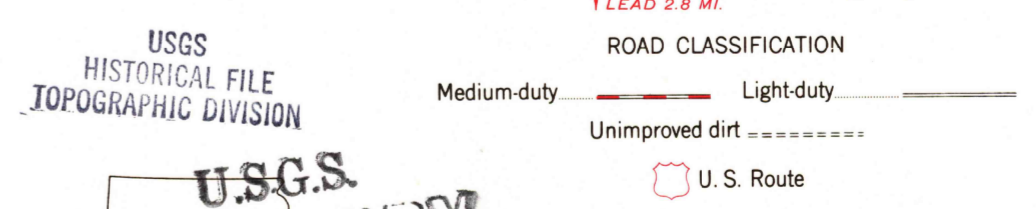
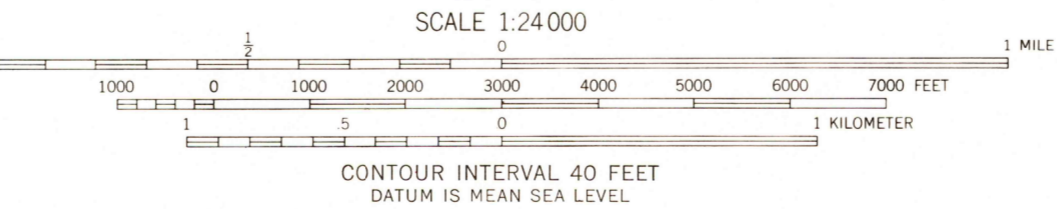
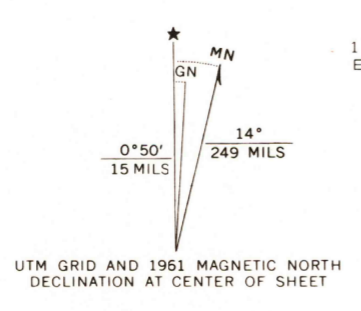


UNITED STATES  
DEPARTMENT OF THE INTERIOR  
GEOLOGICAL SURVEY

SPEARFISH QUADRANGLE  
SOUTH DAKOTA—LAWRENCE CO.  
7.5 MINUTE SERIES (TOPOGRAPHIC)  
NE 1/4 SPEARFISH 15' QUADRANGLE



Mapped, edited, and published by the Geological Survey  
Control by USGS and USC&GS  
Topography by photogrammetric methods from aerial  
photographs taken 1958. Field checked 1961  
Polyconic projection. 1927 North American datum  
10,000-foot grid based on South Dakota coordinate system, north zone  
1000-meter Universal Transverse Mercator grid ticks,  
zone 13, shown in blue  
Red tint indicates area in which only landmark buildings are shown  
Fine red dashed lines indicate selected fence and field lines where  
generally visible on aerial photographs. This information is unchecked



USGS  
HISTORICAL FILE  
TOPOGRAPHIC DIVISION  
SOUTH DAKOTA  
SPEARFISH  
TOPOGRAPHIC DIVISION

SPEARFISH, S. DAK.  
NE 1/4 SPEARFISH 15' QUADRANGLE  
N 4422.5 - W 10345/7.5

4800  
MAY 24 1968

THIS MAP COMPLIES WITH NATIONAL MAP ACCURACY STANDARDS  
FOR SALE BY U. S. GEOLOGICAL SURVEY, DENVER, COLORADO 80225 OR WASHINGTON, D. C. 20242  
A FOLDER DESCRIBING TOPOGRAPHIC MAPS AND SYMBOLS IS AVAILABLE ON REQUEST

1961  
AMS 5272 IV NE—SERIES V873