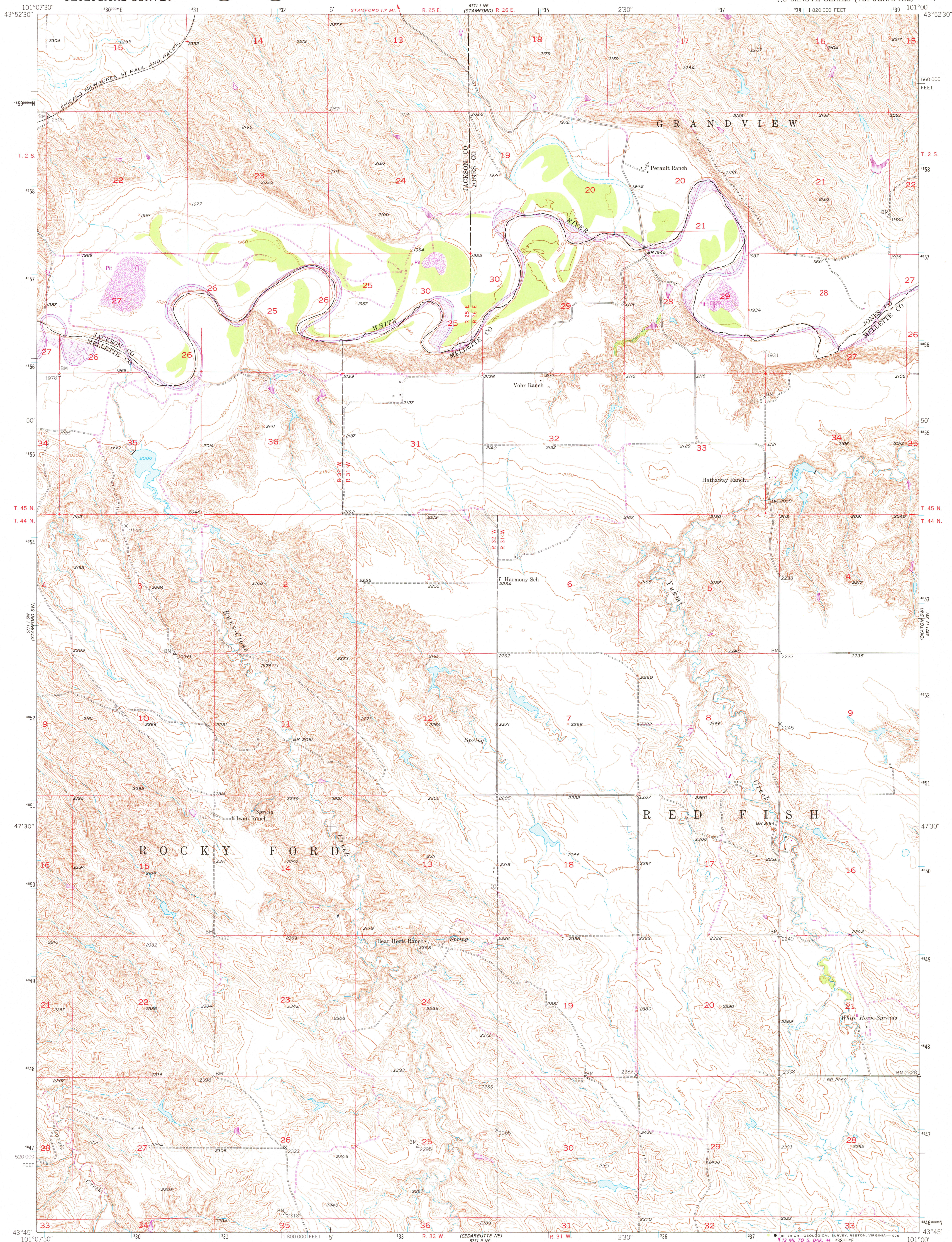


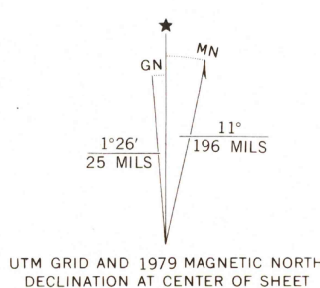
UNITED STATES
DEPARTMENT OF THE INTERIOR
GEOLOGICAL SURVEY



STAMFORD SE QUADRANGLE
SOUTH DAKOTA
7.5 MINUTE SERIES (TOPOGRAPHIC)



Mapped, edited, and published by the Geological Survey as part of the Department of the Interior program for the development of the Missouri River Basin Control by USGS and USC&GS
Topography from aerial photographs by photogrammetric methods
Aerial photographs taken 1948. Field check 1951
Polyconic projection. 1927 North American datum
10,000-foot grid based on South Dakota coordinate system, south zone
1000-meter Universal Transverse Mercator grid ticks, zone 14, shown in blue
Revisions shown in purple compiled from aerial photographs taken 1976. Map edited 1979. This information not field checked



SCALE 1:24,000
1 0 1000 2000 3000 4000 5000 6000 7000 FEET
1 0 5 10 15 20 KILOMETER
CONTOUR INTERVAL 10 FEET
NATIONAL GEODETIC VERTICAL DATUM OF 1929



ROAD CLASSIFICATION
Heavy-duty 4 LANE 16 LANE Light-duty
Medium-duty 4 LANE 16 LANE Unimproved dirt
U. S. Route State Route

USGS
Historical File
Topographic Division

STAMFORD SE, S. DAK.
N4345-W10100/7.5
1951
PHOTOREVISED 1979
DMA 5771 1 SE-SERIES V873

AUG 3 1979