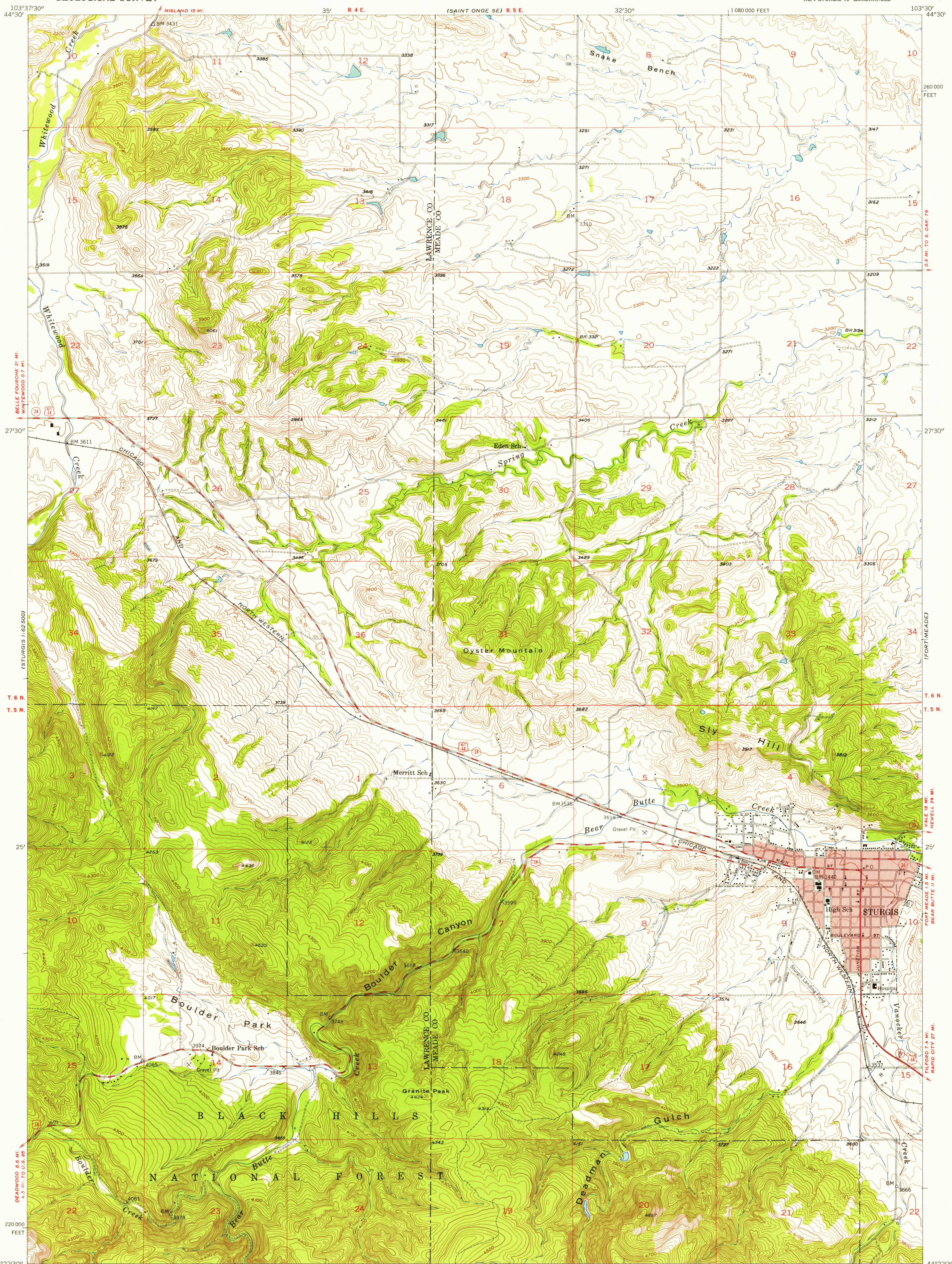
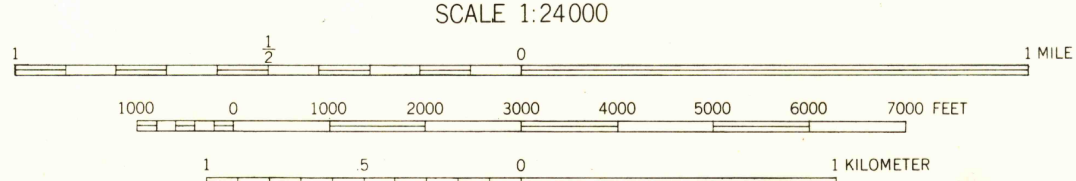


U.S.G.S.  
FILE COPY  
TOPOGRAPHIC DIVISION

U.S.G.S.  
FILE COPY  
TOPOGRAPHIC DIVISION

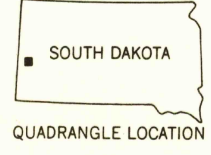


Mapped, edited, and published by the Geological Survey  
Control by USGS and USC&GS  
Topography from aerial photographs by multiplex methods  
Aerial photographs taken 1952. Field check 1954  
Polyconic projection. 1927 North American datum  
10,000-foot grid based on South Dakota coordinate system,  
north zone  
Red tint indicates area in which only  
landmark buildings are shown



USGS  
HISTORICAL FILE  
TOPOGRAPHIC DIVISION

ROAD CLASSIFICATION  
Heavy-duty 4 LANE 16 LANE Light-duty  
Medium-duty 4 LANE 16 LANE Unimproved dirt  
U. S. Route State Route



STURGIS, S. DAK.  
NE/4 STURGIS 15' QUADRANGLE  
N4422.5-W10330/7.5  
1954