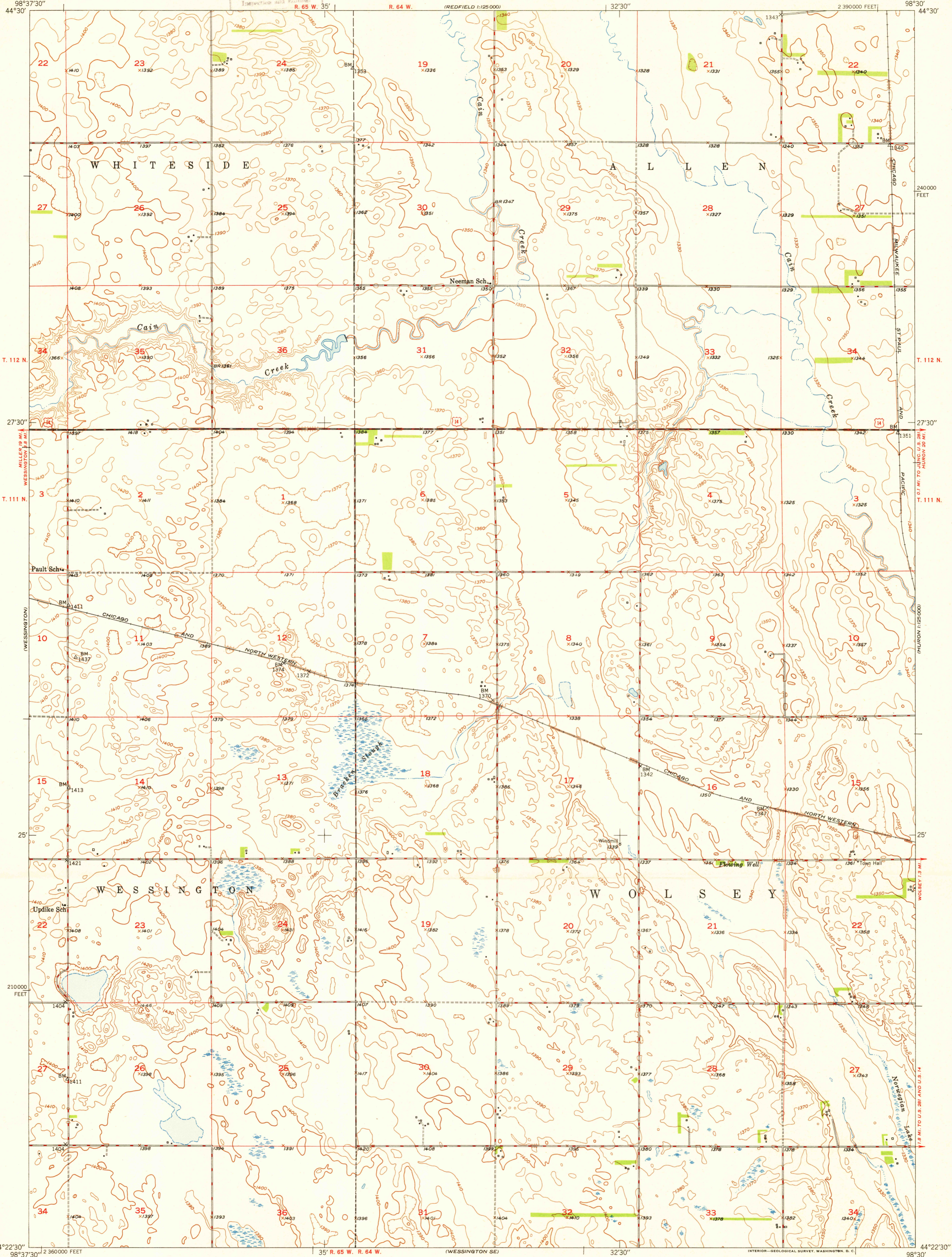
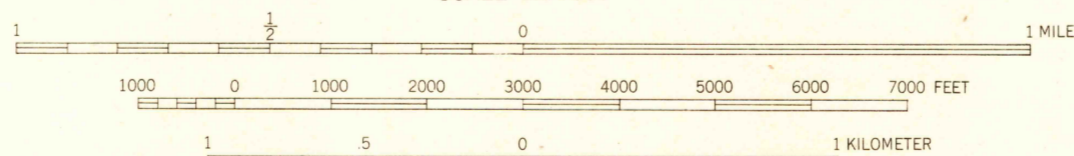
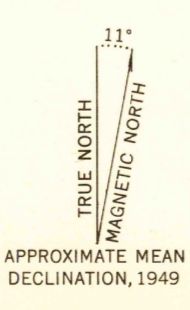


U.S.G.S.
FILE COPY
Topographic and Hydrographic



Mapped, edited, and published by the Geological Survey as part of the Department of the Interior program for the development of the Missouri River Basin Control by USGS and USC&GS
Culture and drainage in part compiled from aerial photographs taken 1948
Topography by plane-table methods 1949
Polyconic projection 1927 North American datum
10,000-foot grid based on South Dakota coordinate system, north zone



CONTOUR INTERVAL 10 FEET
DATUM IS MEAN SEA LEVEL

USGS
HISTORICAL FILE
TOPOGRAPHIC DIVISION

ROAD CLASSIFICATION

| | |
|---------------------------------------------------|----------------------------------|
| HARD-SURFACE ALL WEATHER ROADS | DRY WEATHER ROADS |
| Heavy-duty ——— LANE 18 LANE | Improved dirt ——— |
| Medium-duty ——— LANE 18 LANE | Unimproved dirt ——— |
| Loose-surface, graded, or narrow hard-surface ——— | |
| U. S. Route (circle with number) | State Route (circle with number) |

WESSINGTON NE, S. DAK.
N4422.5-W9830/7.5
EDITION OF 1950

THIS MAP COMPLIES WITH NATIONAL MAP ACCURACY STANDARDS
FOR SALE BY U.S. GEOLOGICAL SURVEY, FEDERAL CENTER, DENVER, COLORADO OR WASHINGTON 25, D. C.
AND BY THE SOUTH DAKOTA GEOLOGICAL SURVEY, VERMILION, SOUTH DAKOTA
A FOLDER DESCRIBING TOPOGRAPHIC MAPS AND SYMBOLS IS AVAILABLE ON REQUEST

U.S.G.S.
FILE COPY
Topographic and Hydrographic