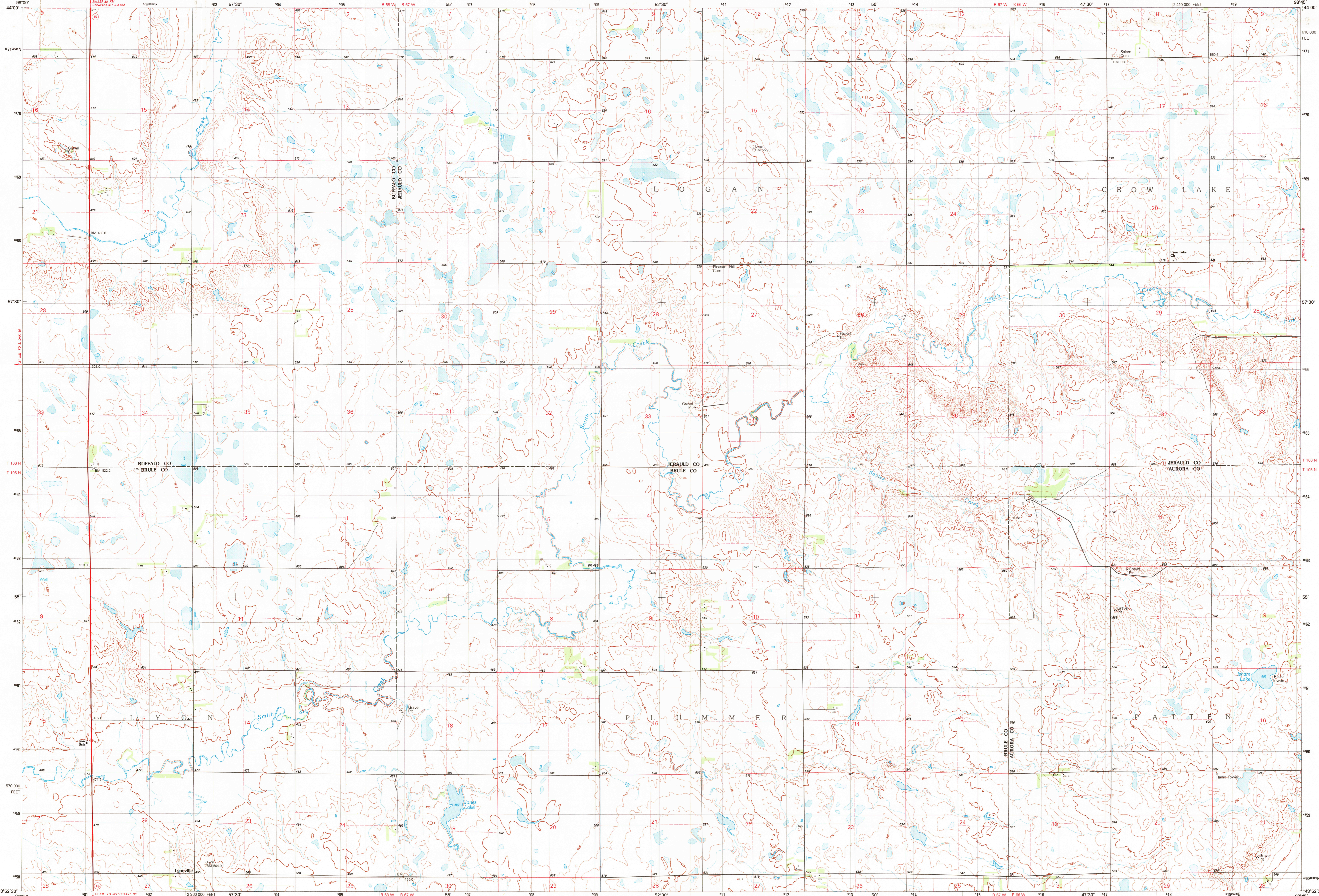


LYONVILLE, SOUTH DAKOTA

7.5 X 15 MINUTE SERIES (TOPOGRAPHIC)



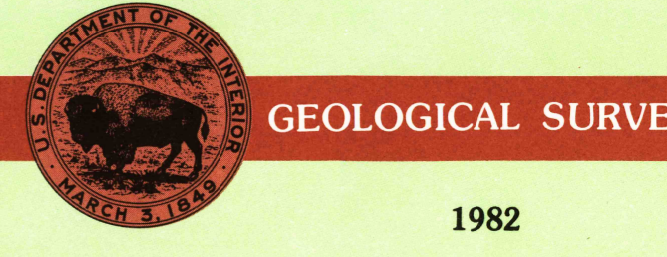
Lyonville SOUTH DAKOTA

1:25 000-scale metric topographic map



7.5 X 15 MINUTE QUADRANGLE SHOWING

- Contours and elevations in meters
- Highways, roads and other manmade structures
- Water features
- Woodland areas
- Geographic names



Produced by the United States Geological Survey in cooperation with State of South Dakota agencies

Controlled by USGS and NOS/NOAA. Compiled by photogrammetric methods from aerial photographs taken 1978. Field checked 1979. Map edited 1982.

CONTOUR INTERVAL 5 METERS. NATIONAL GEODETIC VERTICAL DATUM OF 1929. CONTROL ELEVATIONS SHOWN TO THE NEAREST 0.1 METER.

THIS MAP COMPLIES WITH NATIONAL MAP ACCURACY STANDARDS

CONVERSION TABLE		DECLINATION DIAGRAM		ADJOINING MAPS				
Meters	Feet	GN	MN	1	2	3	4	5
1	3.2808			1	2	3	4	5
2	6.5617			6	7	8		
3	9.8425			9	10	11		
4	13.1234			12	13	14		
5	16.4042			15	16	17		
6	19.6850			18	19	20		
7	22.9659			21	22	23		
8	26.2467			24	25	26		
9	29.5275			27	28	29		
10	32.8084			30	31	32		

To convert meters to feet multiply by 3.2808
To convert feet to meters multiply by 0.3048

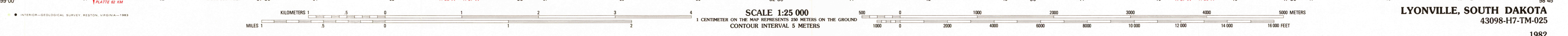
UTM grid convergence (CN) at 1982 meridian declination (MN) Diagram is approximate

1 Big Bend Dam
2 SE (7.5')
3 Gamewell SE (7.5')
4 Spring SW (7.5')
5 Crow Lake
6 Plummer
7 Kimball North
8 Winmarth Lake

FOR SALE BY U. S. GEOLOGICAL SURVEY, DENVER, COLORADO 80225 OR RESTON, VIRGINIA 22092

Topographic Map Symbols

- Primary highway, hard surface
- Secondary highway, hard surface
- Light duty road, hard or improved surface
- Unimproved road, trail
- Route marker: Interstate, U. S. State
- Railroad: standard gage; narrow gage
- Bridge: drawbridge
- Footbridge; overpass; underpass
- Back-up area: only selected landmark buildings shown
- House; barn; church; school; large structure
- Boundary: National, with monument; State; County; Civil township, precinct, district; Incorporated city, village, town; National or State reservation; small park; U. S. public lands survey; range, township, section; Range, township, section line: location approximate
- Fence or field line
- Power transmission line, located lower
- Dam; dam with lock
- Cemetery, grave
- Campground; picnic area; U. S. location monument
- Well; water well; spring
- Mine shaft; prospect; adit or shaft
- Control: horizontal station; vertical station; spot elevation
- Contours: index; intermediate; supplementary; depression
- Distorted surface: strip mine, lava; sand
- Soundings; depth curve
- Personal lake and stream; intermittent lake and stream
- Rapids, large and small; falls, large and small
- Swamp; marsh
- Submerged marsh; land subject to controlled inundation
- Woodland; scattered trees
- Scrub; mangrove
- Orchard; vineyard



LYONVILLE, SOUTH DAKOTA 43098-H7-TM-025