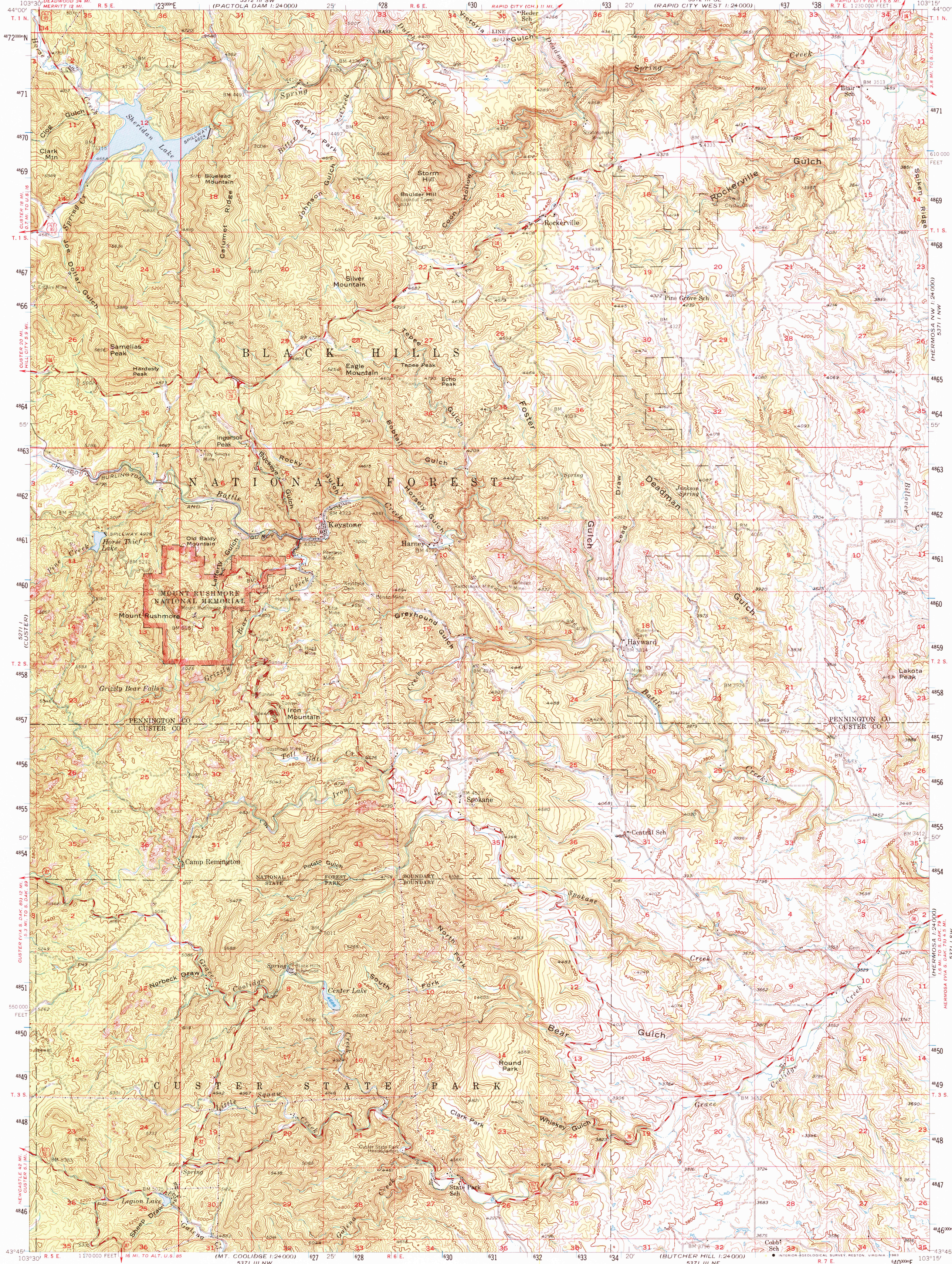


5372 I SE
(SPRINGFIELD, ILL.)
1:24,000

UNITED STATES
DEPARTMENT OF THE INTERIOR
GEOLOGICAL SURVEY

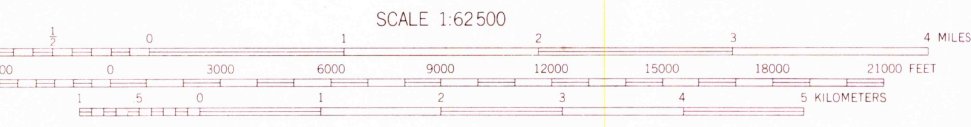
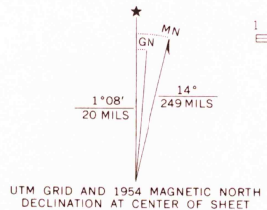
MOUNT RUSHMORE QUADRANGLE
SOUTH DAKOTA
15 MINUTE SERIES (TOPOGRAPHIC)

5372 I SW
(RAPID CITY, S.D.)
1:24,000



5371 I SE
(SPRINGFIELD, ILL.)
1:24,000

Mapped, edited, and published by the Geological Survey
Control by USGS and USC&GS
Compiled in 1957 from 1:24,000 scale maps of Rockerville,
Mount Rushmore, Iron Mountain, and Hayward 7.5 minute
quadrangles. Topography from aerial photographs
by multiplex methods. Field check 1954
Polyconic projection. 1927 North American datum
10,000-foot grid based on South Dakota coordinate system,
south zone
1000-meter Universal Transverse Mercator grid ticks,
zone 13, shown in blue
To place on the predicted North American Datum 1983
move the projection lines 6 meters north and 42 meters east
There may be private inholdings within the boundaries of
the National or State reservations shown on this map



ROAD CLASSIFICATION

| | |
|-----------------|-------------|
| Medium-duty | Light-duty |
| Unimproved dirt | State Route |
| U.S. Route | |

This area also covered by 1:24,000 scale maps of
Rockerville, Mount Rushmore, Iron Mountain, and
Hayward 7.5 minute quadrangles, surveyed 1954
MOUNT RUSHMORE, S. DAK.
N4345-W10315/15
1954
AMS 5371 IV-SERIES V773

THIS MAP COMPLIES WITH NATIONAL MAP ACCURACY STANDARDS
FOR SALE BY U. S. GEOLOGICAL SURVEY, DENVER, COLORADO 80225, OR RESTON, VIRGINIA 22092
A FOLDER DESCRIBING TOPOGRAPHIC MAPS AND SYMBOLS IS AVAILABLE ON REQUEST

RETURN TO:
USGS AND HISTORICAL MAP ARCHIVES

SEP 1 1969