

# Hohenwald

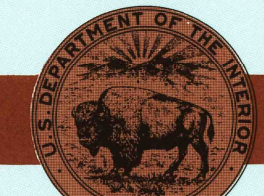
## TENNESSEE

1:100,000-scale metric  
topographic map



30 X 60 MINUTE QUADRANGLE  
SHOWING

- Contours and elevations in meters
- Highways, roads and other manmade structures
- Water features
- Woodland areas
- Geographic names



GEOLOGICAL SURVEY

1986  
TENNESSEE VALLEY AUTHORITY

Produced by the Tennessee Valley Authority  
in cooperation with the United States Geological Survey

Compiled from USGS-TVA 1:24 000-scale topographic maps dated 1949-1986. Planimetry revised from aerial photographs taken 1981 and other source data. Revised information not field checked. Map edited 1986.

1927 North American Datum (NAD 27) Projection and 10 000-meter grid; Universal Transverse Mercator, zone 16 25 000-foot ticks: Tennessee coordinate system

The difference between NAD 27 and North American Datum of 1983 (NAD 83) is too small to show at this scale. The values of the shift between the datums for 7.5 minute intersections are given in USGS Bulletin 1875

There may be private inholdings within the boundaries of the National or State reservations shown on this map

CONTOUR INTERVAL 20 METERS

NATIONAL GEODETIC VERTICAL DATUM OF 1929

ELEVATIONS SHOWN TO THE NEAREST METER

THIS MAP COMPLIES WITH NATIONAL MAP ACCURACY STANDARDS

CONVERSION TABLE		DECLINATION DIAGRAM	ADJOINING MAPS			
Meters	Feet		1	2	3	
1	3.2808		4	5	6	7
2	6.5617					
3	9.8425					
4	13.1234					
5	16.4042					
6	19.6850					
7	22.9659					
8	26.2467					
9	29.5276					
10	32.8084					
To convert meters to feet multiply by 3.2808		UTM grid convergence (GN and 1983 magnetic declination) (MN) at center of map Diagram is approximate		1 McKenzie 2 Hickman 3 Nashville 4 Milan 5 Nashvilleboro 6 Selmer 7 Lawrenceburg 8 Tallahassee		

FOR SALE BY U.S. GEOLOGICAL SURVEY  
DENVER, COLORADO 80225, OR RESTON, VIRGINIA 22092  
TENNESSEE DEPARTMENT OF CONSERVATION, DIVISION OF GEOLOGY,  
NASHVILLE, TENN. 37243, AND  
U.S. TENNESSEE VALLEY AUTHORITY, CHATTANOOGA, TENN. 37402

## Topographic Map Symbols

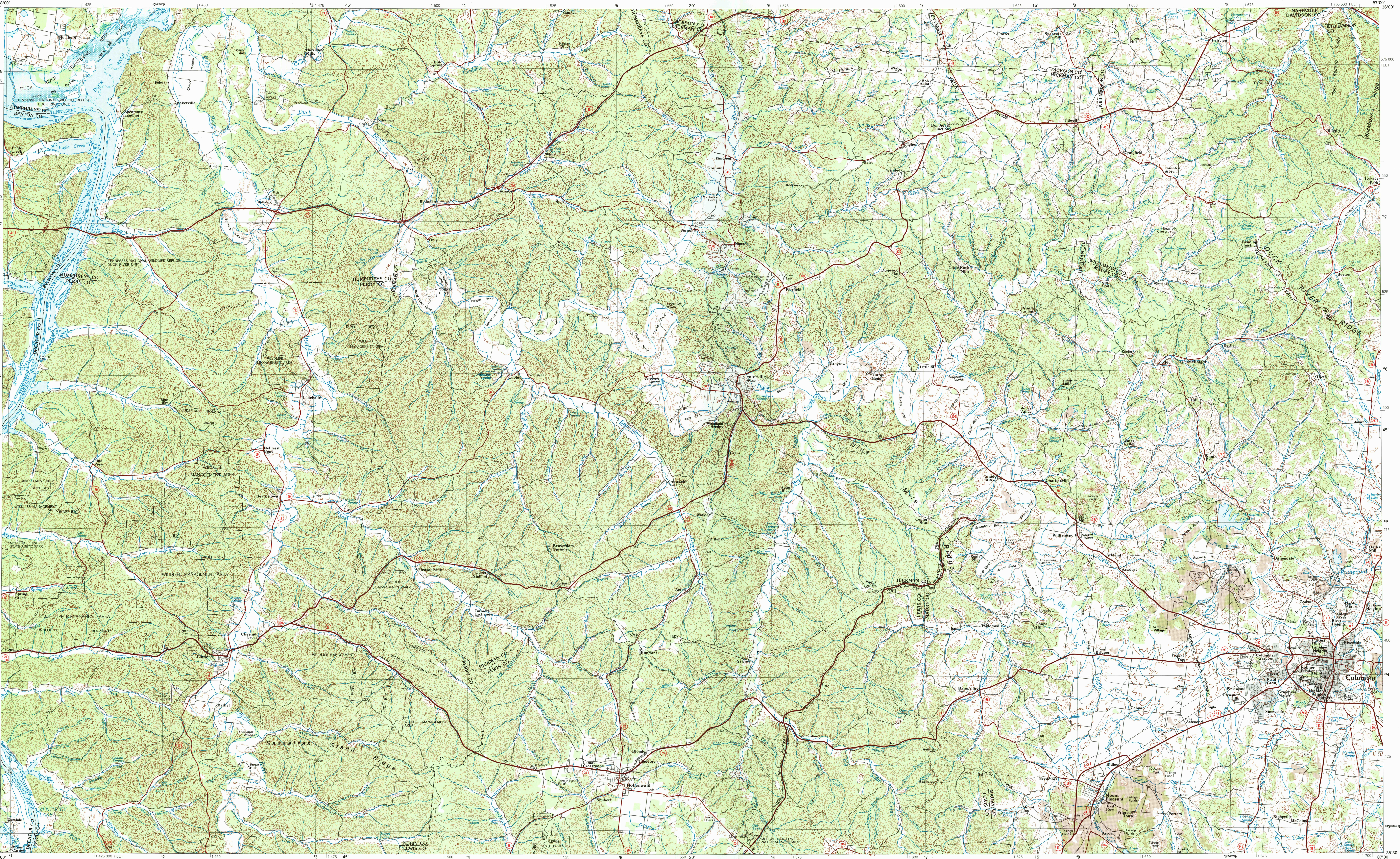
Primary highway, hard surface	
Secondary highway, hard surface	
Light duty road, principal street, hard or improved surface	
Other road or street, trail	
Route marker, interstate; U. S. State	
Railroad: standard gage, narrow gage	
Bridge: overpass; underpass	
Tunnel: road; railroad	
Built up area, locality, elevation	
Airport, landing field, landing strip	
National boundary	
State boundary	
County boundary	
National or State reservation boundary	
Land grant boundary	
U. S. public lands survey range, township, section	
Range, township; section line: protracted	
Power transmission line; pipeline	
Dam, dam with lock	
Cemetery, building	
Windmill; water well; spring	
Mine shaft; adit or cave; mine, quarry; gravel pit	
Campground; picnic area, U. S. location monument	
Ruin, cliff dwelling	
Distorted surface, strip mine, lava, sand	
Contours: index, intermediate, supplementary	
Bathymetric contours: index, intermediate	
Stream, lake, perennial; intermittent	
Reefs, large and small; sho, kelp and small	
Area to be submerged; marsh, swamp	
Land subject to controlled inundation, woodland	
Scrub; mangrove	
Orchard; vineyard	

A pamphlet describing topographic maps is available on request



HOHENWALD, TENNESSEE  
35087-E1-TM-100

1986



INTERIOR—GEOLOGICAL SURVEY, RESTON, VIRGINIA—1983

KILOMETERS

1 0 1 2 3 4 5 6 7 8 9 10 11 12 13 14 15 16 17 18 19 20

MILES

1 0 1 2 3 4 5 6 7 8 9 10 11 12 13

SCALE 1:100 000

1 CENTIMETER ON THE MAP REPRESENTS 1 KILOMETER ON THE GROUND

CONTOUR INTERVAL 20 METERS

5000 10000 15000 20000 25000 30000 35000 40000 45000 50000 55000 60000 65000 70000 METERS

5000 10000 15000 20000 25000 30000 35000 40000 45000 50000 55000 60000 65000 70000 FEET