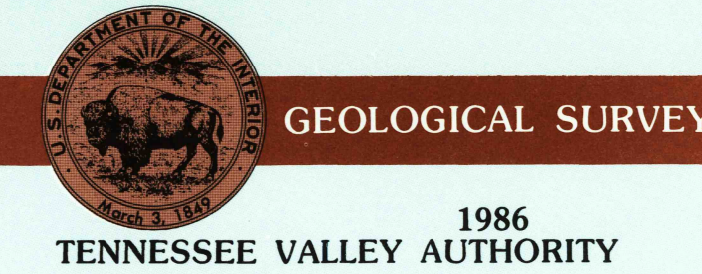


30 X 60 MINUTE QUADRANGLE SHOWING

- Elevations in meters
- Highways, roads and other manmade structures
- Water features
- Woodland areas
- Geographic names



Produced by Tennessee Valley Authority in cooperation with the United States Geological Survey
 Compiled from USGS-TVA 1:24 000-scale topographic maps dated 1949-1986. Planimetry revised from aerial photographs taken 1980-1985 and other source data. Revised information not field checked. Map edited 1986.

Projection and 10 000-meter grid, zone 16: Universal Transverse Mercator
 25 000-foot grid ticks based on Tennessee coordinate system
 To place on the predicted North American Datum 1983 move the projection lines 6 meters south and 4 meters east
 There may be private inholdings within the boundaries of the National or State reservations shown on this map

NATIONAL GEODETIC DATUM OF 1929
 ELEVATIONS SHOWN TO THE NEAREST METER

THIS MAP COMPLIES WITH NATIONAL MAP ACCURACY STANDARDS

CONVERSION TABLE		DECLINATION DIAGRAM		ADJOINING MAPS		
Meters	Feet	ON		1	2	3
1	3.2808	18 WILLS		4	5	6
2	6.5617	12 WILLS		7	8	9
3	9.8425	6 WILLS		10	11	12
4	13.1234	0 WILLS		13	14	15
5	16.4042	6 WILLS		16	17	18
6	19.6850	12 WILLS		19	20	21
7	22.9658	18 WILLS		22	23	24
8	26.2467	24 WILLS		25	26	27
9	29.5275	30 WILLS		28	29	30
10	32.8084	36 WILLS		31	32	33

To convert meters to feet multiply by 3.2808
 To convert feet to meters multiply by 0.3048

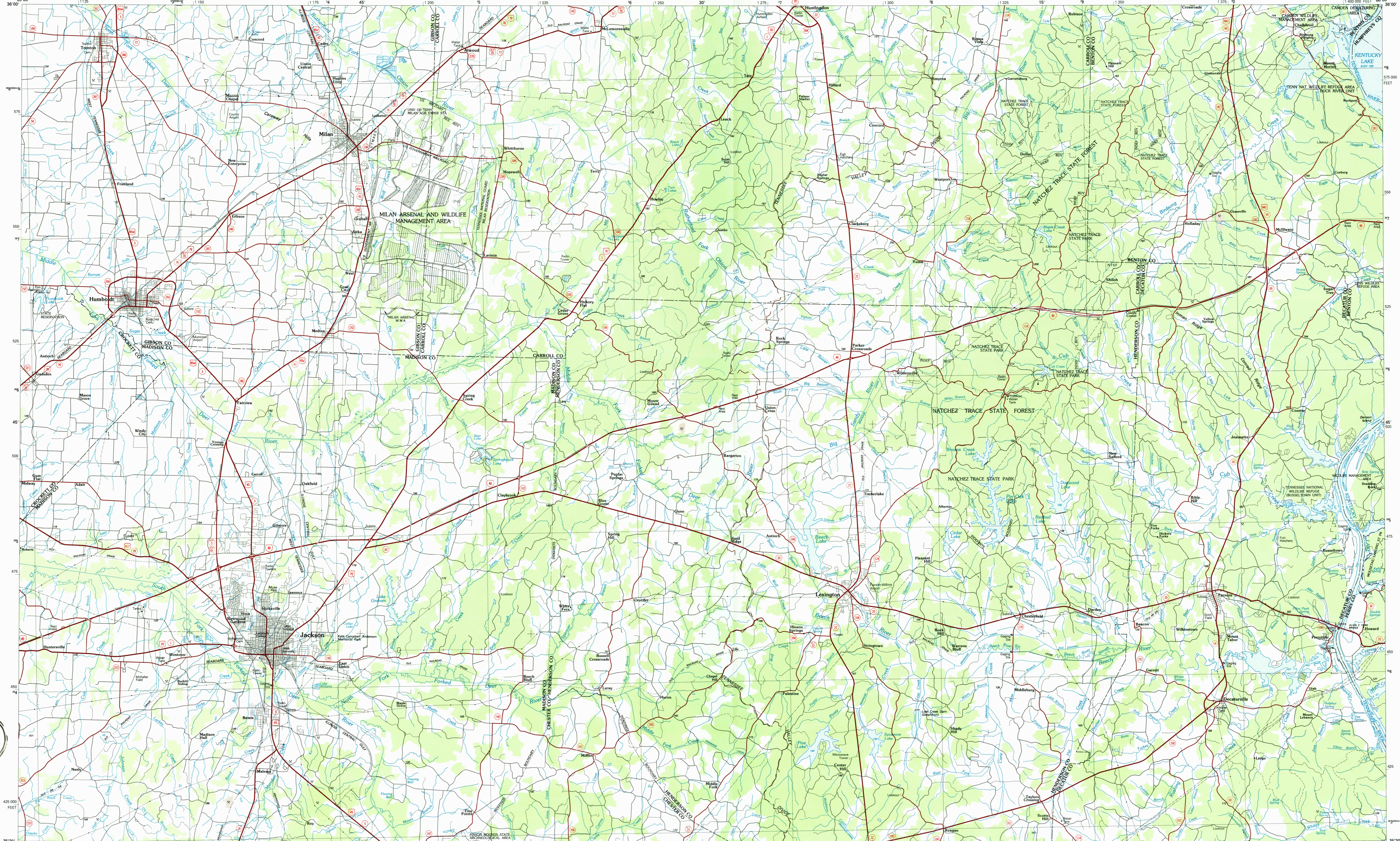
UTM grid convergence (100 m) at center of map
 Declination (D.M.) at center of map
 Diagram is approximate

FOR SALE BY U.S. GEOLOGICAL SURVEY
 DENVER, COLORADO 80225, OR RESTON, VIRGINIA 22092
 TENNESSEE DEPARTMENT OF CONSERVATION, DIVISION OF GEOLOGY,
 NASHVILLE, TENN. 37219, AND
 U.S. TENNESSEE VALLEY AUTHORITY, CHATTANOOGA, TENN. 37401
 OR KNOXVILLE, TENN. 37902

Topographic Map Symbols

Primary highway, hard surface	
Secondary highway, hard surface	
Light duty road, principal street, hard or improved surface	
Other road or street, dirt	
Route marker: interstates, U. S., State	
Railroad: standard gage, narrow gage	
Bridge: overpass; underpass	
Tunnel: road, railroad	
Built-up area: building, elevation	
Airport: landing field, landing strip	
National boundary	
State boundary	
County boundary	
National or State reservation boundary	
Land grant boundary	
U. S. public lands survey: range, township, section	
Range, township, section line: projected	
Power transmission line; pipeline	
Dam; dam with lock	
Cemetery; building	
Windmill; water well; spring	
Mine shaft; adit or cave; mine, quarry, gravel pit	
Contour: spot area; U. S. location monument	
Ruin; off dwelling	
Distorted surface: strip mine, lava, sand	
Contours: index, intermediate, supplementary	
Bathymetric contours: index, intermediate	
Stream, lake, reservoir; intermittent	
Rapids, large and small; falls, large and small	
Area to be submerged; marsh, swamp	
Land subject to controlled inundation; woodland	
Scrub; mangrove	
Orchard; vineyard	

A pamphlet describing topographic maps is available on request



USGS AND HISTORICAL MAP NOV 27 1985 RECD FILE COPY

RETURN TO USGS AND HISTORICAL MAP ARCHIVES