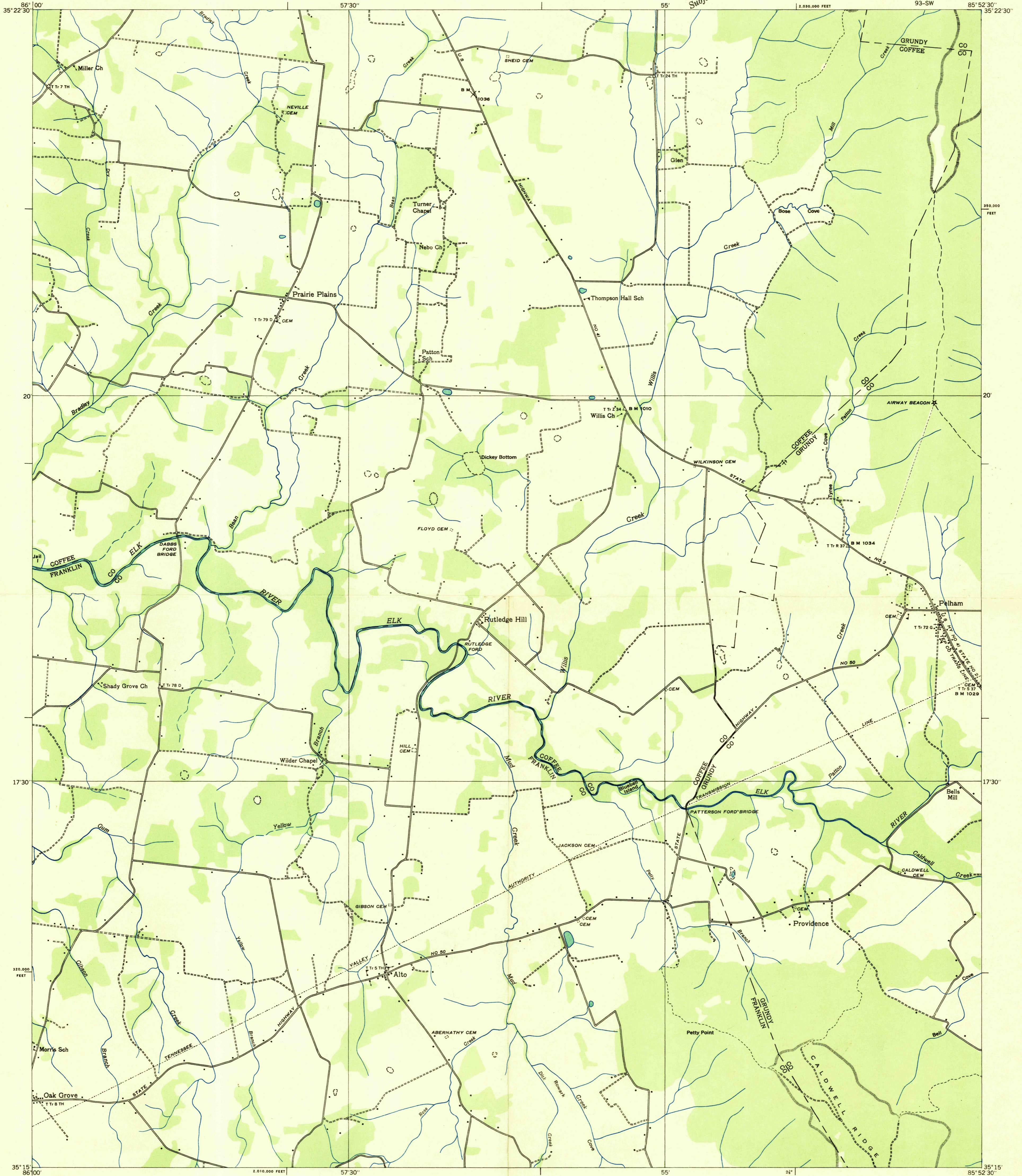
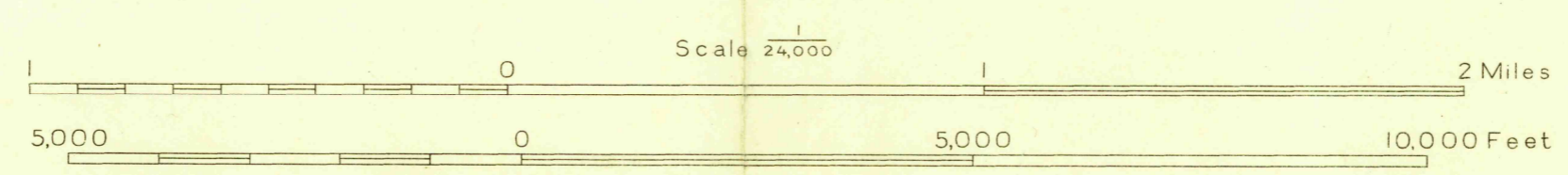


Advance sheet
Subject to correction



Albert Pike, Division Engineer
Compiled by U. S. Geological Survey from aerial photographs
Control by U. S. Geological Survey and U. S. Coast and Geodetic Survey
Field examination in 1936



Datum is mean sea level

Polyconic projection. 1927 North American datum
10,000 foot grid based on Tennessee
rectangular coordinate system

USGS
HISTORICAL FILE
TOPOGRAPHIC DIVISION

Ridge line
Trail
Sinks
Rim rock
Probable drainage

ALTO, TENN.
93-SW

TRUE NORTH
MAGNETIC NORTH
APPROXIMATE MEAN
DECLINATION, 1936