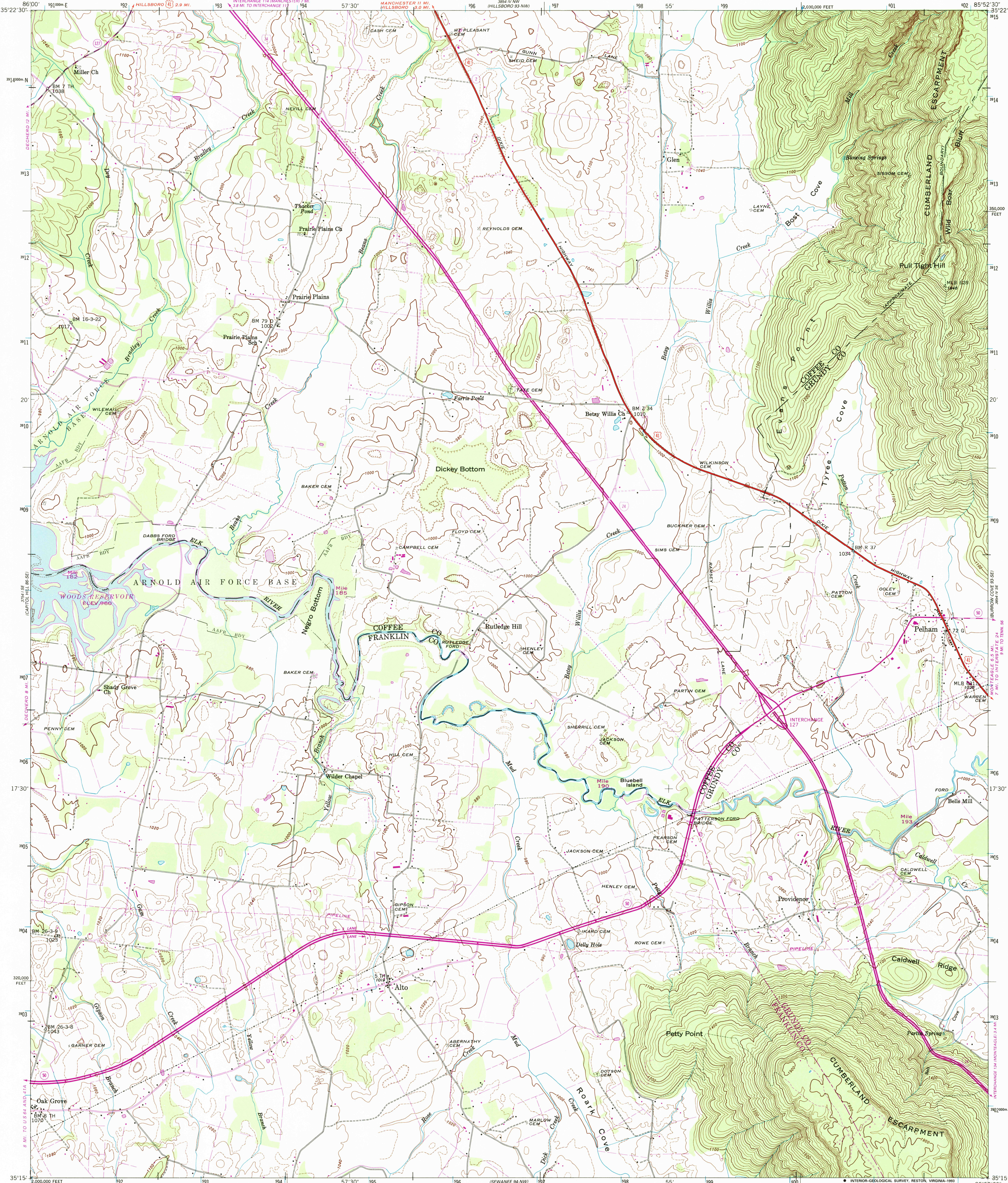


UNITED STATES  
DEPARTMENT OF THE INTERIOR  
GEOLOGICAL SURVEY

UNITED STATES  
TENNESSEE VALLEY AUTHORITY  
MAPPING SERVICES BRANCH

ALTO QUADRANGLE  
TENNESSEE  
7.5 MINUTE SERIES (TOPOGRAPHIC) 93-SW



Mapped and edited by Tennessee Valley Authority  
Published by the Geological Survey  
Control by NOS/NOAA, USGS, WPA and TVA  
Topography by USGS and TVA by photogrammetric  
methods using aerial photographs  
Map field checked by TVA, 1947  
Polyconic projection, 10,000-foot grid ticks based on Tennessee  
coordinate system, 1000-meter Universal Transverse Mercator  
grid ticks, zone 16, shown in blue, 1927 North American Datum.  
To place on the predicted North American Datum 1983  
move the projection lines 7 meters south and 3 meters  
west as shown by dashed corner ticks  
There may be private inholdings within the boundaries of  
the National or State reservations shown on this map

Revisions limited to the Arnold Air Force Base Reservation  
and its immediate vicinity compiled by the Tennessee Valley  
Authority from aerial photographs taken 1992 and other  
sources. This information not field checked. Map edited 1993  
NOTE: THIS IS A PARTIALLY REVISED MAP SHEET FOR  
SPECIAL PURPOSE USE BY ARNOLD AIR FORCE BASE

SCALE 1:24 000  
CONTOUR INTERVAL 20 FEET  
DASHED LINES REPRESENT HALF INTERVAL CONTOURS  
NATIONAL GEODETIC VERTICAL DATUM OF 1929  
THIS MAP COMPLIES WITH NATIONAL MAP ACCURACY STANDARDS  
FOR SALE BY U. S. GEOLOGICAL SURVEY, RESTON, VIRGINIA 22092,  
TENNESSEE DEPARTMENT OF CONSERVATION, DIVISION OF GEOLOGY, NASHVILLE, TENN., 37219  
AND U. S. TENNESSEE VALLEY AUTHORITY, CHATTANOOGA, TENN. 37401 OR KNOXVILLE, TENN., 37902  
A FOLDER DESCRIBING TOPOGRAPHIC MAPS AND SYMBOLS IS AVAILABLE ON REQUEST

Revisions shown in purple and woodland  
compiled by the Tennessee Valley Authority  
from aerial photographs taken 1981 and  
other sources. This information not field  
checked. Map edited 1983  
Fine purple dashed lines indicate selected fence and field lines  
where generally visible on aerial photographs

ROAD CLASSIFICATION  
Primary highway, all weather, hard surface  
Secondary highway, all weather, hard surface  
Light-duty road, all weather, improved surface  
Unimproved road, fair or dry weather  
Interstate Route  
U. S. Route  
State Route  
ALTO, TENN.  
35085-C8-TF-024  
1947  
PHOTOGRAPHED 1983  
DMA 3854 IV SW-SERIES V841  
SPECIAL PARTIAL REVISION 1993

