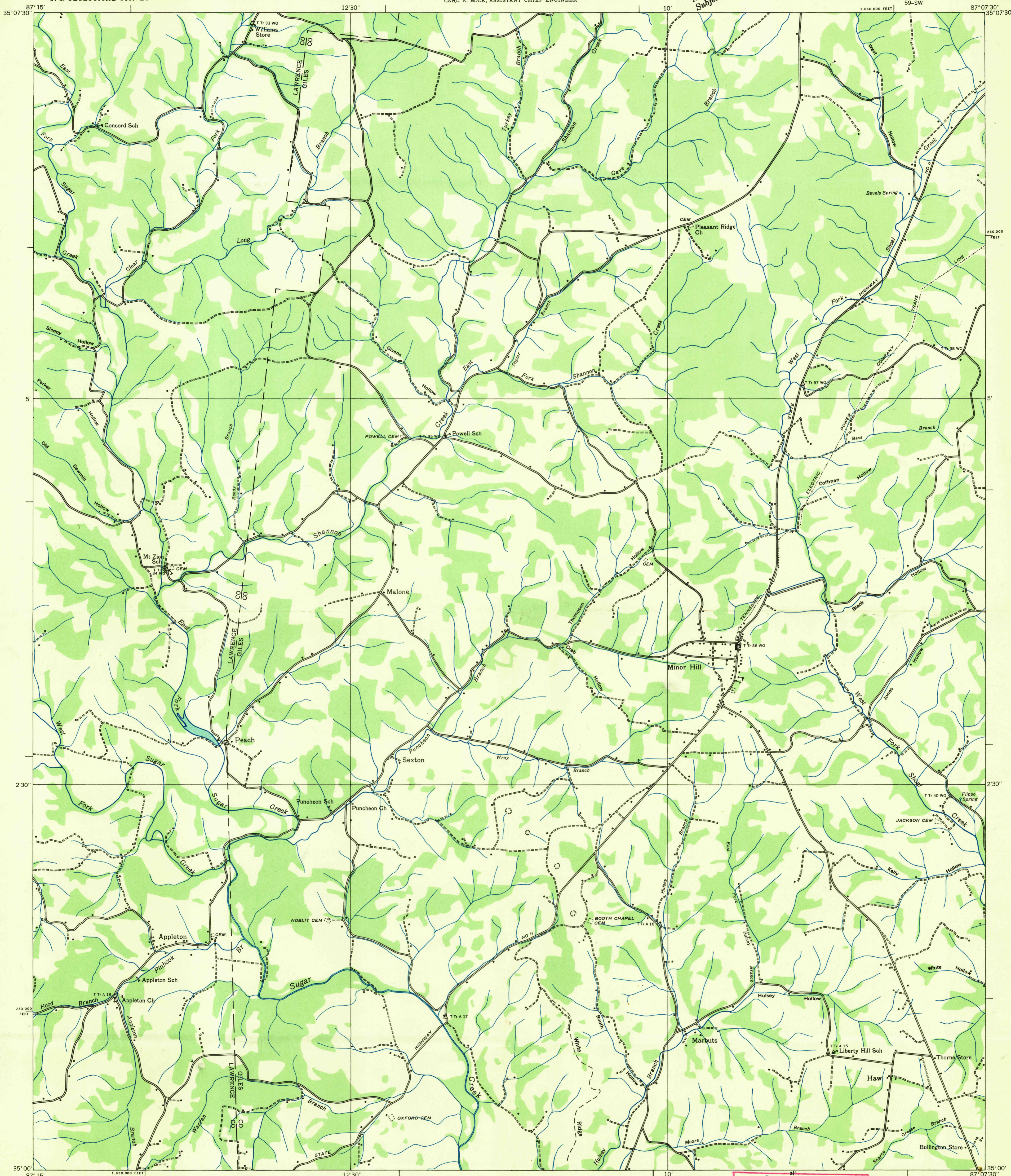


Advance sheet.
Subject to correction.

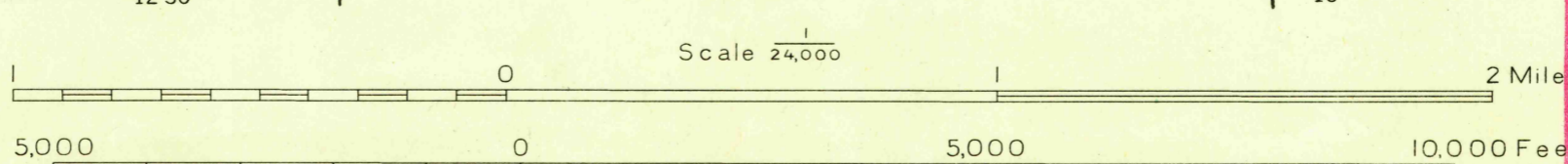


Albert Pike, Division Engineer
Compiled by U. S. Geological Survey from aerial photographs
Control by U. S. Geological Survey
Field examination in 1936

U. S. BOARD ON GEOGRAPHICAL NAMES

Accession

Class



USGS
HISTORICAL FILE
TOPOGRAPHIC DIVISION

U. S. GEOLOGICAL SURVEY
HISTORICAL FILE
TOPOGRAPHIC DIVISION
APPROXIMATE MEAN DECLINATION, 1936

Polygonic projection. 1927 North American datum
10,000 foot grid based on Tennessee
rectangular coordinate system

Ridge line
Trail
Sinks

APPLETON, TENN.
59-SW