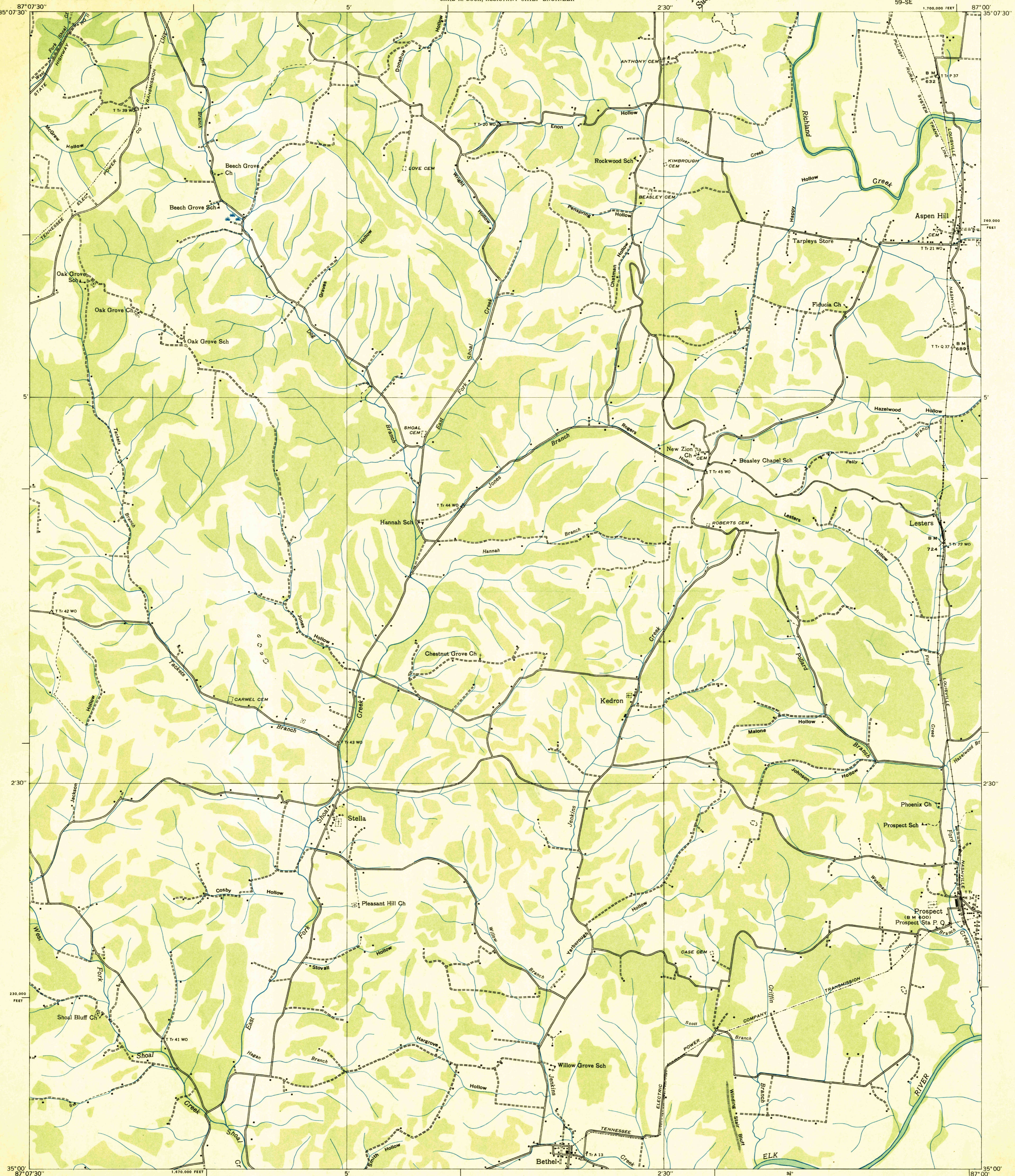
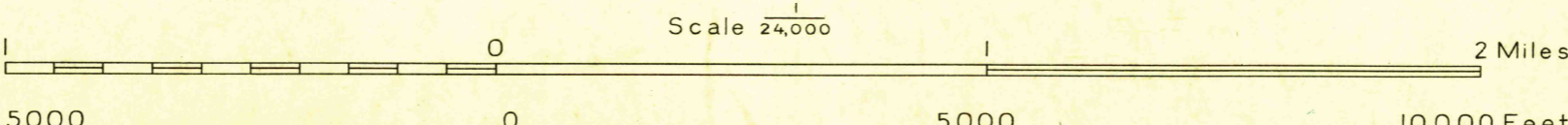


Advance sheet  
Subject to correction



Albert Pike, Division Engineer  
Compiled by U. S. Geological Survey from aerial photographs  
Control by U. S. Geological Survey and U. S. Coast and Geodetic Survey  
Field examination in 1936



U. S. G. S.  
FILE COPY  
Inspection and Billing

U. S. G. S.  
FILE COPY  
Inspection and Billing

Polygonic projection, 1927 North American datum  
10,000 foot grid based on Tennessee  
rectangular coordinate system  
USGS  
HISTORICAL FILE  
TOPOGRAPHIC DIVISION  
APPROXIMATE MEAN  
DECLINATION, 1936  
Trail  
Sinks  
Rim rock  
Probable drainage

ASPEN HILL, TENN.  
59-SE

492