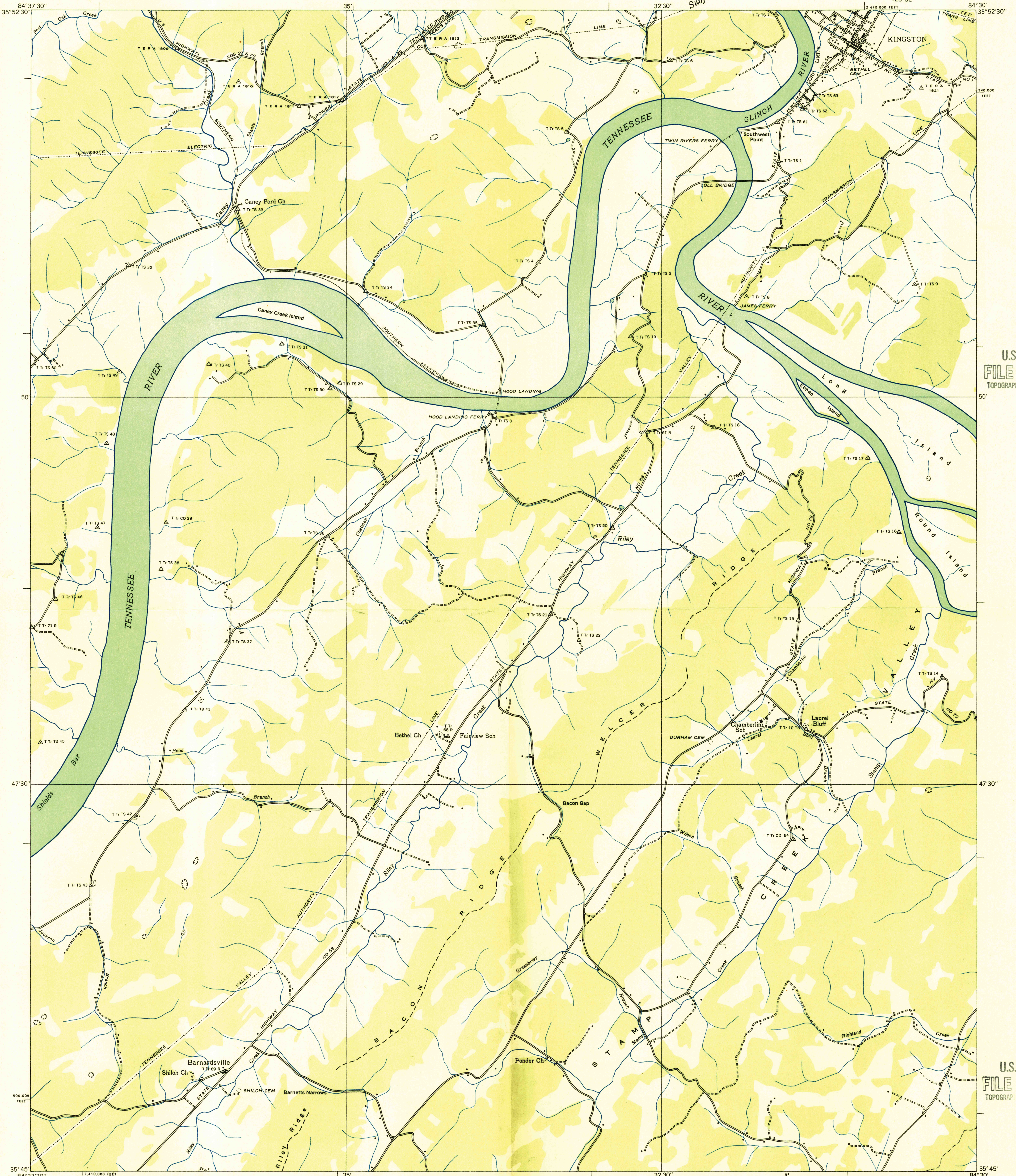


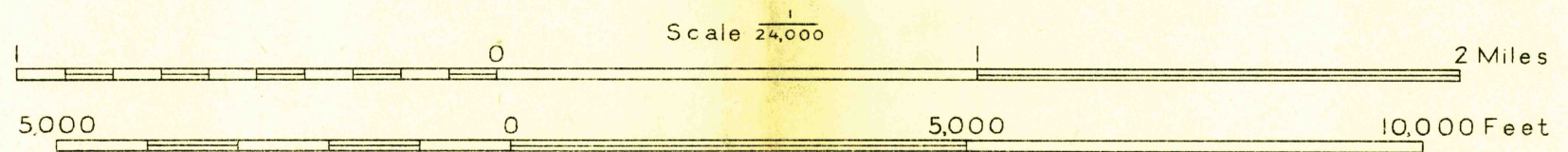
Advance sheet
Subject to correction



U.S.G.S.
FILE COPY
TOPOGRAPHIC DIVISION

U.S.G.S.
FILE COPY
TOPOGRAPHIC DIVISION

Albert Pike, Division Engineer
Compiled by U. S. Geological Survey from aerial photographs
Control by U. S. Geological Survey and Tenn. Em. Rel. Adm.
Field examination in 1936



TRUE NORTH
MAGNETIC NORTH
APPROXIMATE MEAN
DECLINATION, 1936

Polygonic projection. 1927 North American datum
10,000 foot grid based on Tennessee
rectangular coordinate system

Ridge line
Trail
Sinks

BACON GAP, TENN.
123-SE

U.S.G.S.
HISTORICAL FILE
TOPOGRAPHIC DIVISION