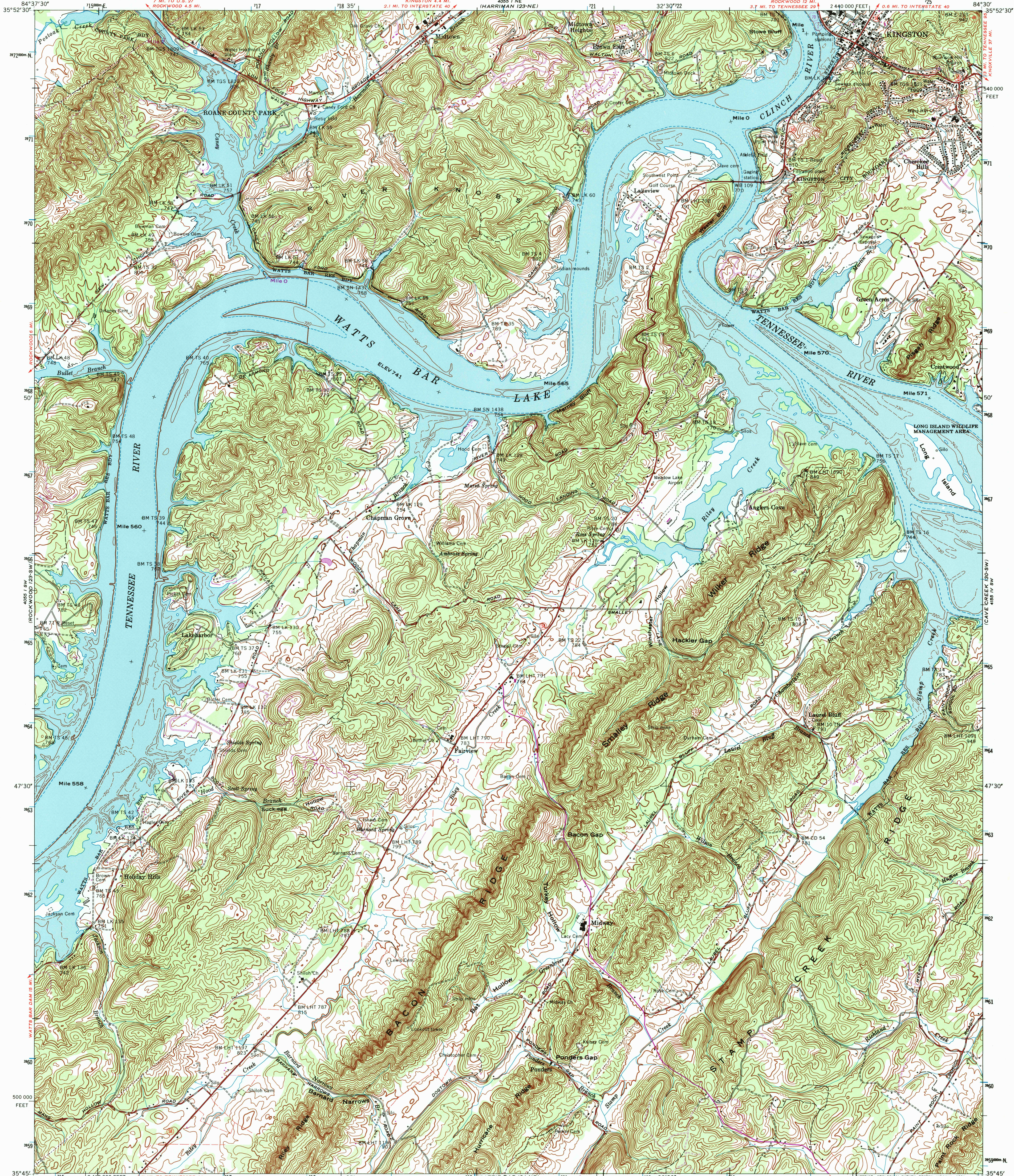


UNITED STATES  
DEPARTMENT OF THE INTERIOR  
GEOLOGICAL SURVEY

UNITED STATES  
TENNESSEE VALLEY AUTHORITY  
MAPPING SERVICES BRANCH

BACON GAP QUADRANGLE  
TENNESSEE-ROANE CO.  
7.5 MINUTE SERIES (TOPOGRAPHIC) 123-SE



Maped and edited by Tennessee Valley Authority  
Published by the Geological Survey

Control by NOS/NOAA, USGS, and TVA

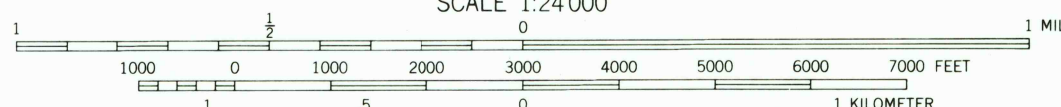
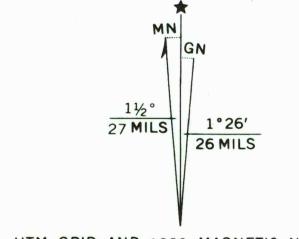
Revised by TVA in 1968 by photogrammetric methods using  
aerial photographs taken 1967 and by reference to TVA-USGS  
quadrangle dated 1952. Map field checked by TVA, 1968

Polyconic projection, 10,000-foot grid ticks based on Tennessee  
coordinate system, 1000-meter Universal Transverse Mercator  
grid ticks, zone 16, shown in blue. 1927 North American Datum  
To place on the predicted North American Datum 1983 move  
the projection lines 6 meters south and 6 meters west as  
shown by dashed corner ticks

Revisions shown in purple and woodland compiled by  
the Tennessee Valley Authority from aerial photographs  
taken 1976 and other source data. This information  
not field checked. Map edited 1980

Fine red dashed lines indicate selected fence and field lines  
visible on aerial photographs. This information is unchecked

There may be private inholdings within the boundaries of  
the National or State reservations shown on this map

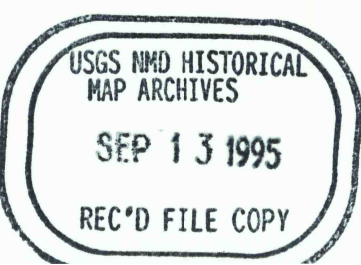


CONTOUR INTERVAL 20 FEET  
DASHED LINES REPRESENT HALF-INTERVAL CONTOURS  
NATIONAL GEODETIC VERTICAL DATUM OF 1929

THIS MAP COMPLIES WITH NATIONAL MAP ACCURACY STANDARDS  
FOR SALE BY U.S. GEOLOGICAL SURVEY, RESTON, VIRGINIA 22092,  
TENNESSEE DIVISION OF GEOLOGY, NASHVILLE, TENN. 37219.  
U.S. TENNESSEE VALLEY AUTHORITY, CHATTANOOGA, TENN. 37401 OR KNOXVILLE, TENN. 37902.  
A FOLDER DESCRIBING TOPOGRAPHIC MAPS AND SYMBOLS IS AVAILABLE ON REQUEST



ROAD CLASSIFICATION	
Primary highway, all weather, hard surface	Light-duty road, all weather, improved surface
Secondary highway, all weather, hard surface	Unimproved road, fair or dry weather
Interstate Route	U. S. Route
	State Route



BACON GAP, TENN.  
N3545-W8430/7.5  
1968  
PHOTOREVISED 1980  
DMA 4055 1 SE-SERIES V841

