

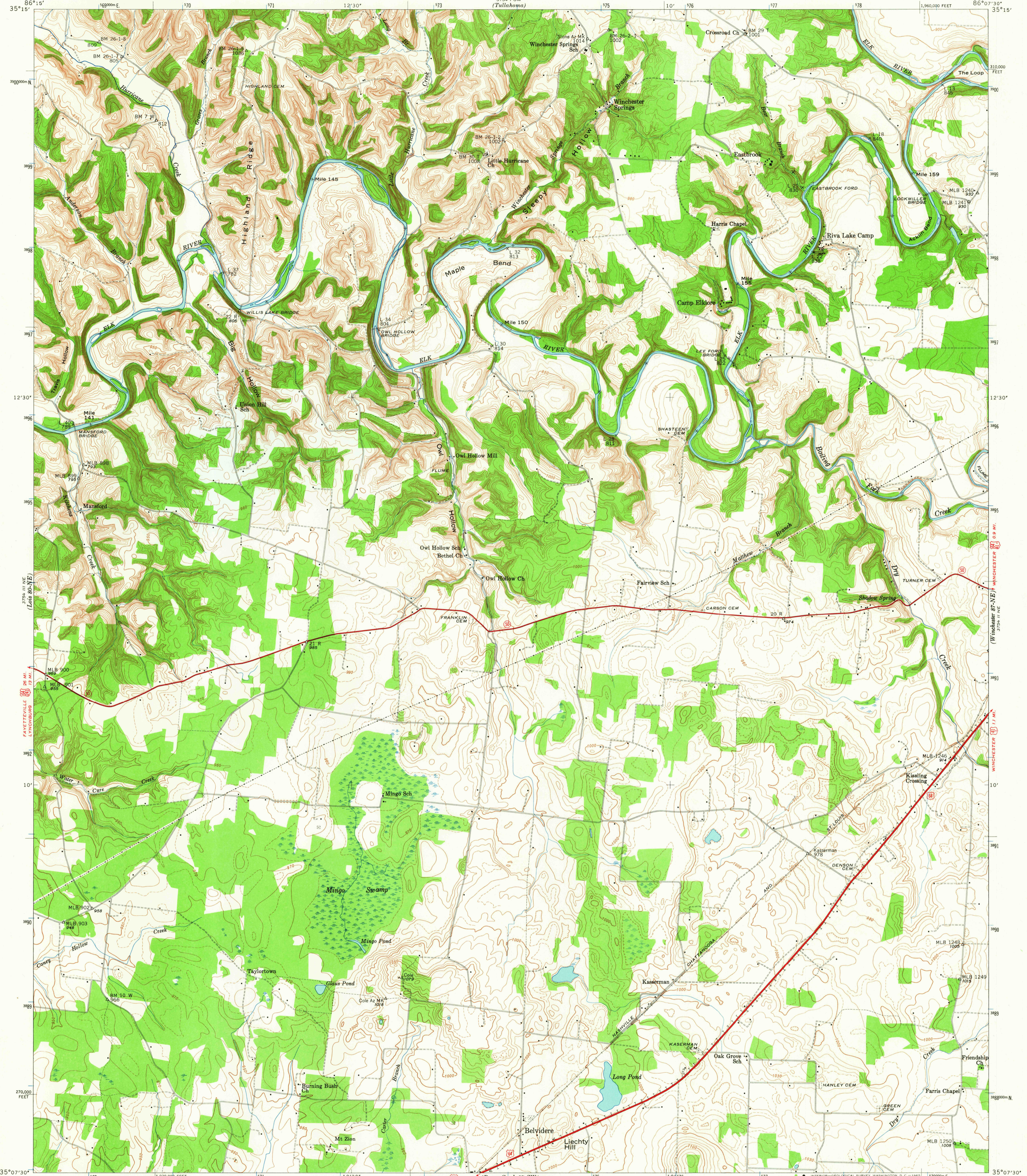
(Camden Springs 74-5E)
3754 IV SE
3754 III SE

UNITED STATES
DEPARTMENT OF THE INTERIOR
GEOLOGICAL SURVEY

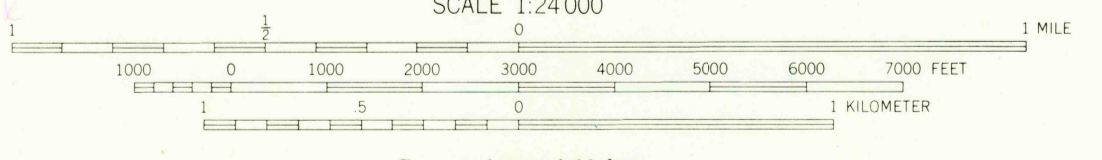
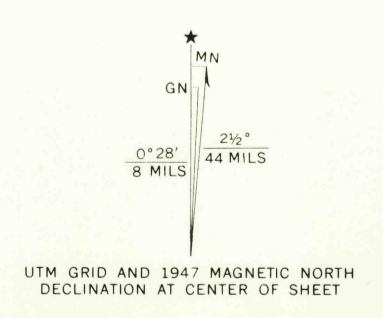
UNITED STATES
TENNESSEE VALLEY AUTHORITY
MAPS AND SURVEYS DIVISION

TENNESSEE
(FRANKLIN COUNTY)
BELVIDERE QUADRANGLE

3754 IV SE
3754 III SE
(Casper Hill 86-5E)



Control by USC&GS, USGS, WPA, and TVA
Topography by USGS and TVA from aerial
photographs by stereophotogrammetric methods
Field examination by Tennessee Valley Authority, 1947
1000-meter Universal Transverse Mercator grid ticks,
zone 16, shown in blue



Contour interval 10 feet
Occasional 5 foot contours shown by broken lines
Datum is mean sea level

THIS MAP COMPLIES WITH NATIONAL MAP ACCURACY STANDARDS
FOR SALE BY U. S. GEOLOGICAL SURVEY, WASHINGTON, D. C. 20242.
U. S. TENNESSEE VALLEY AUTHORITY, CHATTANOOGA OR KNOXVILLE, TENN.,
AND TENNESSEE DIVISION OF GEOLOGY, NASHVILLE, TENNESSEE
A FOLDER DESCRIBING TOPOGRAPHIC MAPS AND SYMBOLS IS AVAILABLE ON REQUEST

USGS
HISTORICAL FILE
TOPOGRAPHIC DIVISION

ROUTES USUALLY TRAVELED
HARD, IMPERVIOUS SURFACES
OTHER SURFACE IMPROVEMENTS
U. S. ROUTE
STATE ROUTE

BELVIDERE, TENN. APR 2 1 1965
87-NW
N3507.5-W8607.5/7.5
1947
AMS 3754 II NW-SERIES V841

775