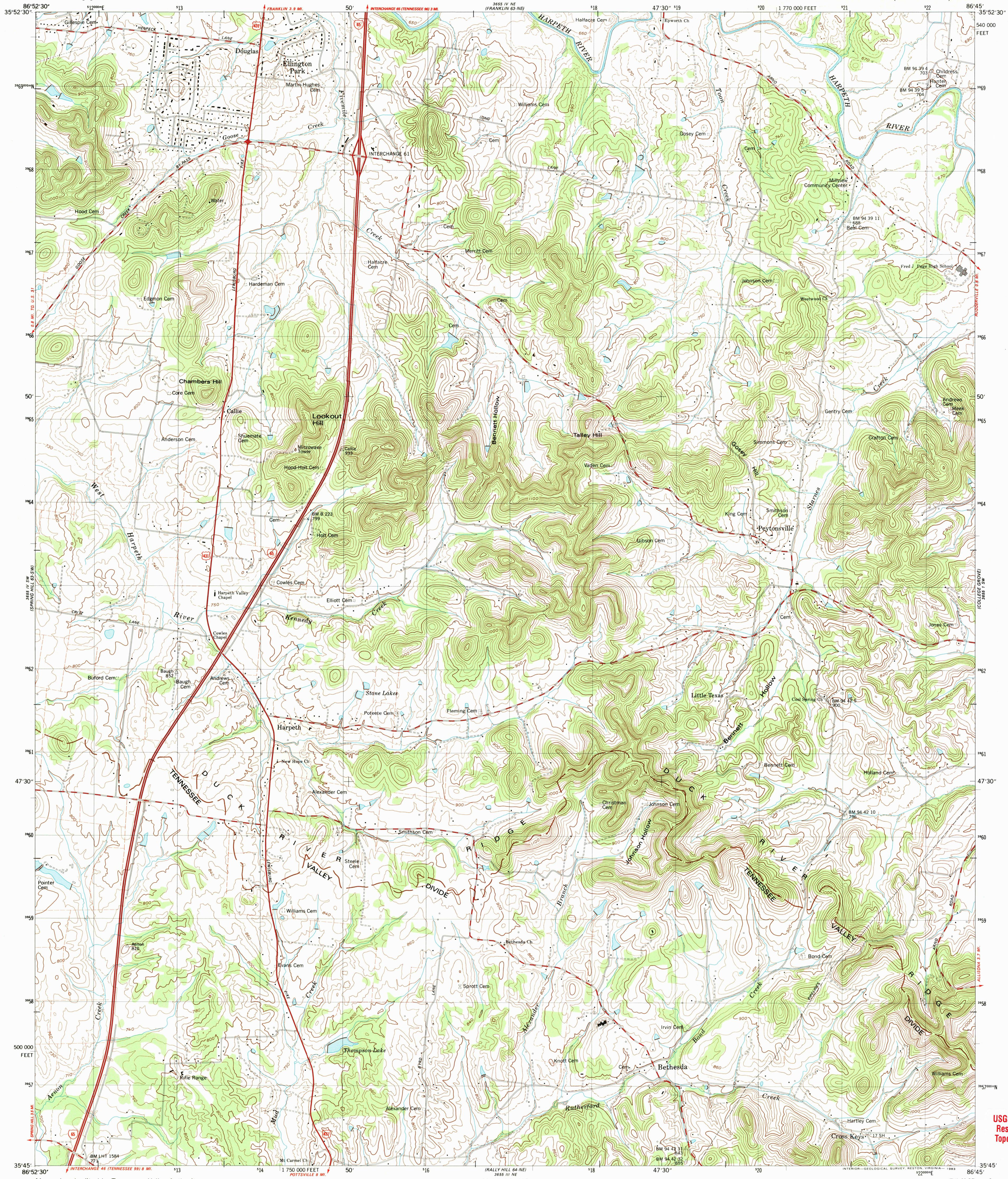




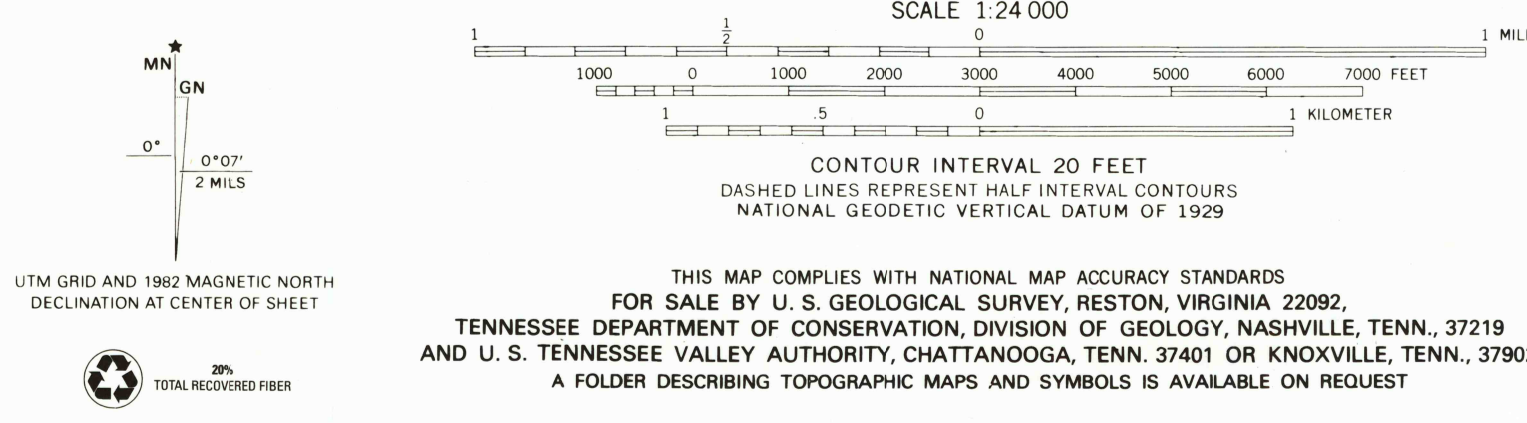
U.S. DEPARTMENT OF THE INTERIOR  
U.S. GEOLOGICAL SURVEY

UNITED STATES  
TENNESSEE VALLEY AUTHORITY  
MAPPING SERVICES BRANCH

BETHESDA QUADRANGLE  
TENNESSEE-WILLIAMSON CO.  
7.5 MINUTE SERIES (TOPOGRAPHIC) 63-SE



Mapped and edited by Tennessee Valley Authority  
Published by the Geological Survey  
Control by NOS/NOAA, USGS, and TVA  
Revised by TVA in 1978 by photogrammetric methods using  
aerial photographs taken 1976 and by reference to TVA-USGS  
quadrangle dated 1946. Map field checked by TVA, 1980.  
Map edited 1982.  
Polyconic projection, 10,000-foot grid ticks based on Tennessee  
coordinate system, 1000-meter Universal Transverse Mercator  
grid, zone 16, 1927 North American Datum. To place on the  
predicted North American Datum 1983 move the projection lines  
6 meters south as shown by dashed corner ticks  
Fine red dashed lines indicate selected fence and field lines  
visible on aerial photographs. This information is unchecked



ROAD CLASSIFICATION (TVA 63-SE)

Primary highway, all weather, hard surface	Light-duty road, all weather, improved surface
Secondary highway, all weather, hard surface	Unimproved road, fair or dry weather

   Interstate Route   
    U. S. Route   
    State Route

ILL. KENTUCKY VA. MISS. ALA. GA. S.C. TENNESSEE  
 QUADRANGLE LOCATION

USGS LIBRARY - RESTON  
 3 1818 00509631 6  
 BETHESDA, TENN.  
 35086-G7-TF-024  
 1982  
 DMA3655 IV SE-SERIES V841

USGS Library  
Reston, VA  
Topo Archive



SEP 19 2006