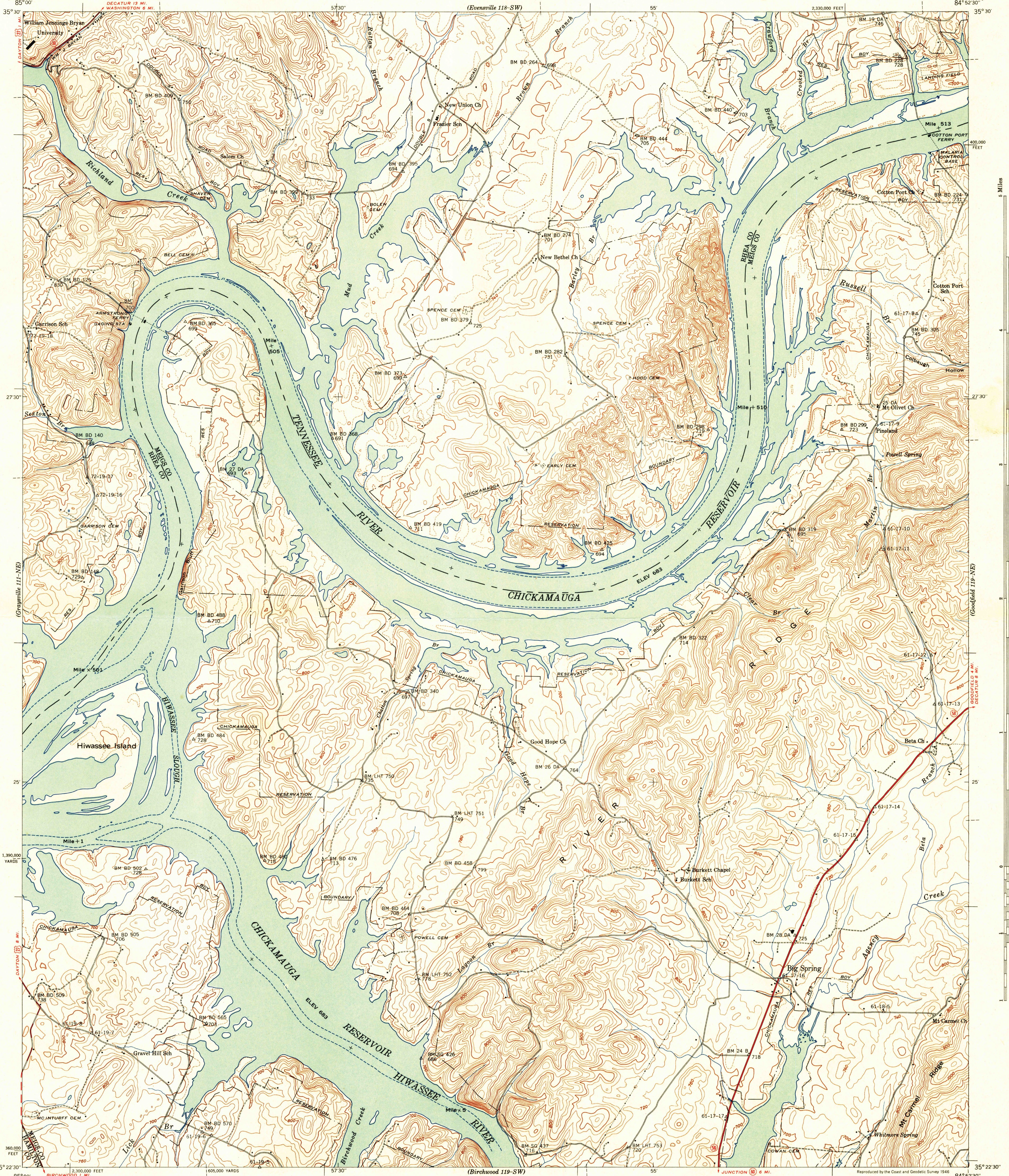


U.S.G.S.  
FILE COPY  
Investigation and Editing



Control by USC&GS, USGS, and TVA  
Topography by Geological Survey from aerial  
photographs by stereophotogrammetric methods  
Field examination by Tennessee Valley Authority, 1942  
Maps distributed by the Geological Survey

TRUE NORTH  
MAGNETIC NORTH  
APPROXIMATE MEAN  
DECLINATION, 1943

Scale 24000  
1" = 2 Miles  
1" = 2 Kilometers

Contour interval 20 feet  
Occasional 10 foot contours shown by broken lines  
Datum is mean sea level

U.S.G.S.  
HISTORICAL FILE  
TOPOGRAPHIC DIVISION

Polyconic projection. 1927 North American datum  
10,000 foot grid based on Tennessee  
rectangular coordinate system  
5,000 yard grid based on U. S. zone system, B  
ROUTES USUALLY TRAVELED

HARD IMPERVIOUS SURFACES  
OTHER SURFACE IMPROVEMENTS  
U.S. ROUTE

BIG SPRING, TENN.  
119 - NW  
Edition of 1943  
N3522.5-W8452.5/7.5