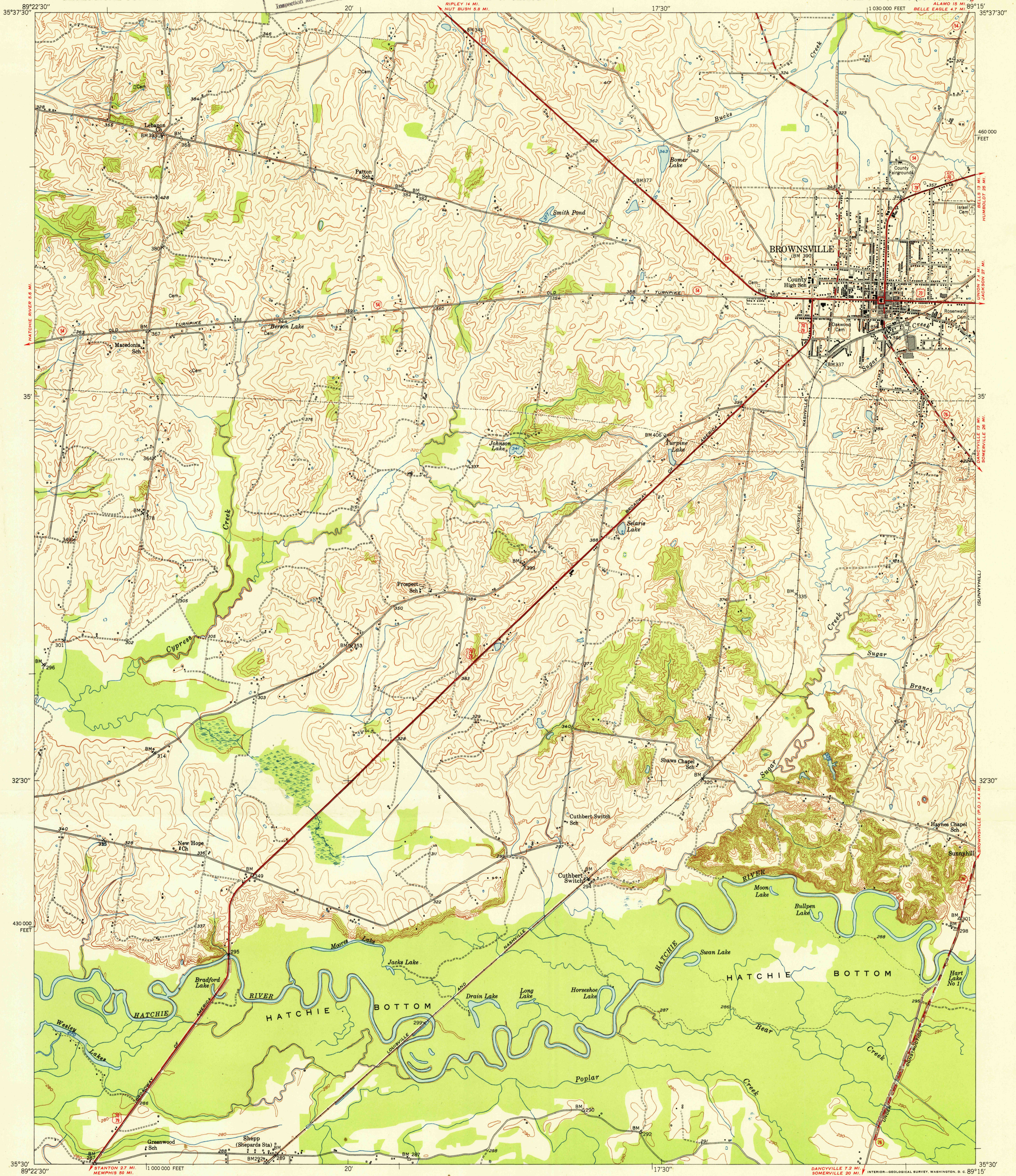
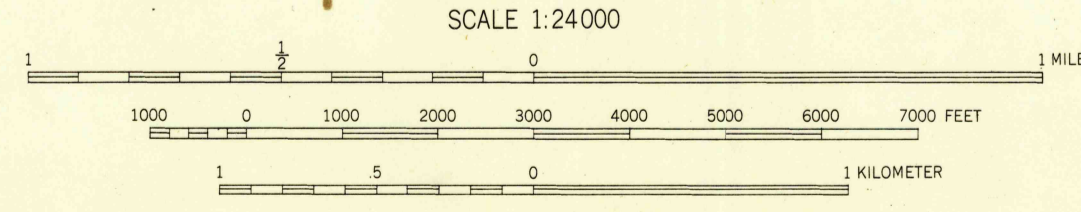


U.S.G.S.
FILE COPY
Inspection and Editing



Mapped, edited, and published by the Geological Survey
Control by USGS, USC&GS, USED, and TVA
Culture and drainage in part compiled from
aerial photographs taken 1947
Topography by plane-table methods 1950
Polyconic projection. 1927 North American datum
10,000-foot grid based on Tennessee coordinate system

TRUE NORTH
MAGNETIC NORTH
APPROXIMATE MEAN
DECLINATION, 1950



CONTOUR INTERVAL 10 FEET
DATUM IS MEAN SEA LEVEL

USGS
HISTORICAL FILE
TOPOGRAPHIC DIVISION

ROAD CLASSIFICATION
Heavy-duty... 4 LANE LANE Light duty...
Medium-duty... 4 LANE LANE Unimproved dirt...
U. S. Route State Route

U.S.G.S.
FILE COPY
Inspection and Editing

BROWNSVILLE, TENN.
N3530-W8915/7.5
EDITION OF 1951

THIS MAP COMPLIES WITH NATIONAL MAP ACCURACY STANDARDS
FOR SALE BY U. S. GEOLOGICAL SURVEY, WASHINGTON 25, D. C.
A FOLDER DESCRIBING TOPOGRAPHIC MAPS AND SYMBOLS IS AVAILABLE ON REQUEST