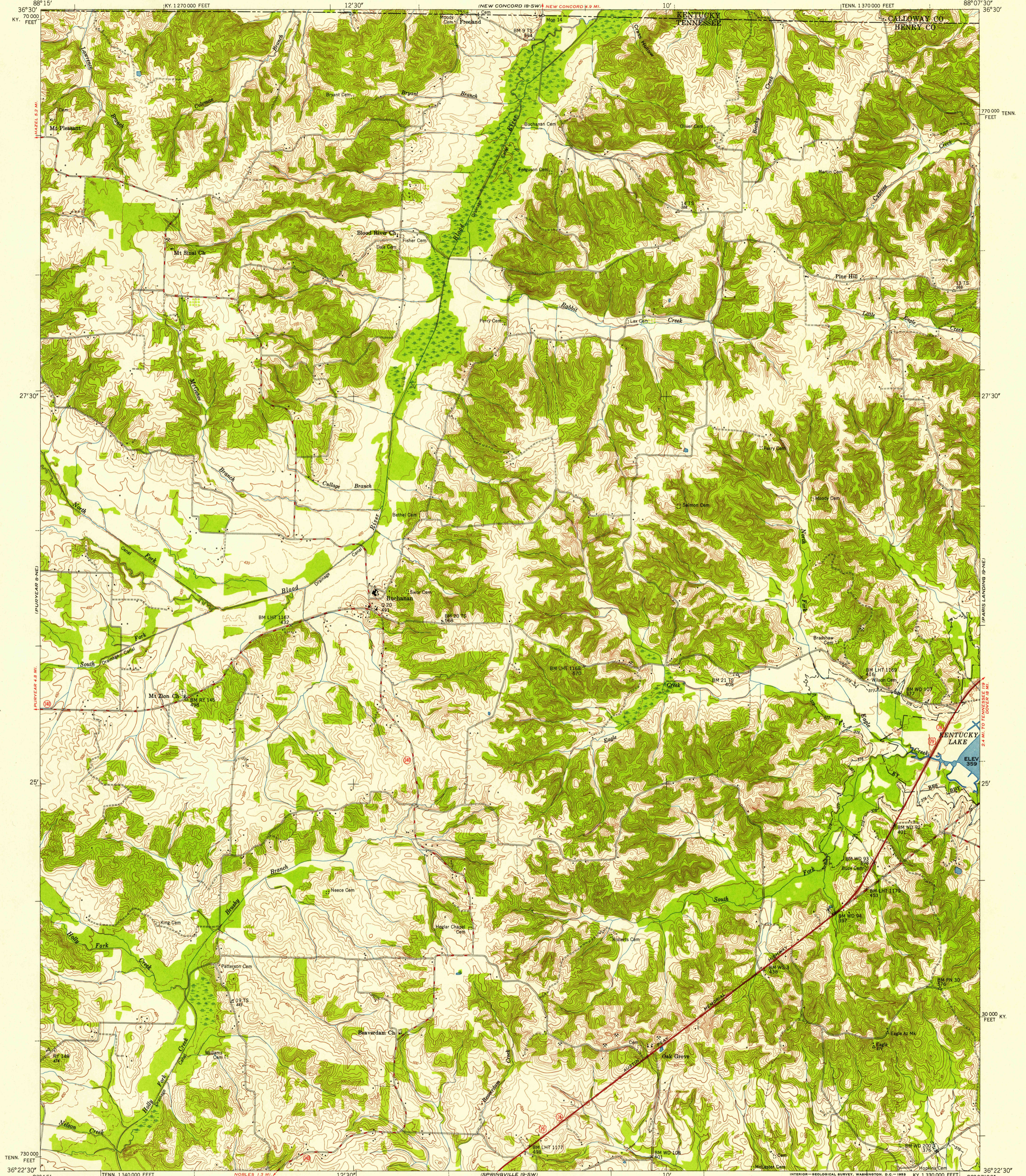
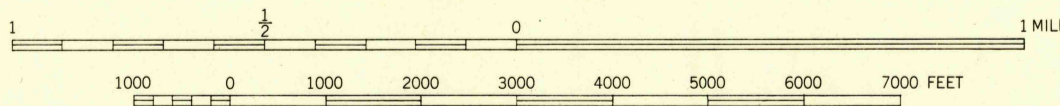


U.S.G.S.
FILE COPY
Inspection and Editing



Maped and edited by Tennessee Valley Authority
Published by the Geological Survey
Control by US&GS, USGS, and TVA
Topography by USGS and TVA by multiplex methods from aerial
photographs taken 1948. Field examination by TVA, 1950
Polyconic projection. 1927 North American datum
10,000-foot grid based on Tennessee and Kentucky (South)
rectangular coordinate systems
--- 876 --- Indicates Kentucky Lake Easement Boundary

TRUE NORTH
MAGNETIC NORTH
APPROXIMATE MEAN
DECLINATION 1950



CONTOUR INTERVAL 10 FEET
DASHED LINES REPRESENT HALF-INTERVAL CONTOURS
DATUM IS MEAN SEA LEVEL

THIS MAP COMPLIES WITH NATIONAL MAP ACCURACY STANDARDS
FOR SALE BY U. S. GEOLOGICAL SURVEY, WASHINGTON 25, D. C.
TENNESSEE DIVISION OF GEOLOGY, NASHVILLE, TENN.
KENTUCKY AGRICULTURE AND INDUSTRIAL DEVELOPMENT BOARD, FRANKFORT, KY.
U. S. TENNESSEE VALLEY AUTHORITY, CHATTANOOGA OR KNOXVILLE, TENN.
A FOLDER DESCRIBING TOPOGRAPHIC MAPS AND SYMBOLS IS AVAILABLE ON REQUEST

USGS
HISTORICAL FILE
TOPOGRAPHIC DIVISION

ROAD CLASSIFICATION
HARD-SURFACE ALL WEATHER ROADS DRY WEATHER ROADS
Heavy-duty **LANE 16 LANE** Improved dirt
Medium-duty **LANE 16 LANE** Unimproved dirt
Loose-surface, graded, or narrow hard-surface
U. S. Route State Route

BUCHANAN, TENN.-KY.
N3622.5-W8807.5/7.5

U.S.G.S.
FILE COPY
Inspection and Editing

1950

APR 1 1954
2210