

(Kyles Ford 179-SW)
(Jonesville 179-SW)
(Presidents Home 171-NE)
(Knoxville 179-SW)
(Bulls Gap 171-SW)

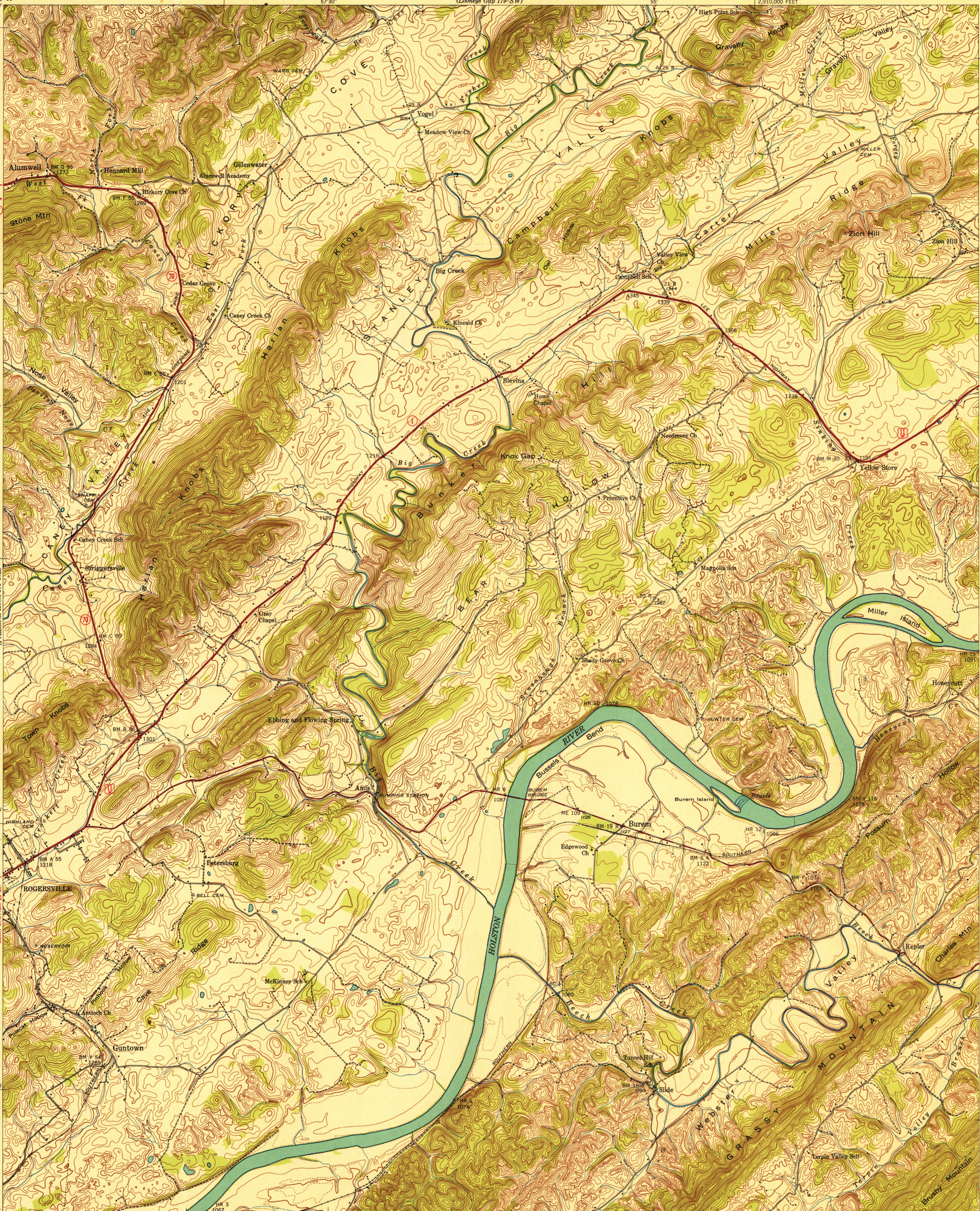
UNITED STATES
DEPARTMENT OF THE INTERIOR
GEOLOGICAL SURVEY

UNITED STATES
TENNESSEE VALLEY AUTHORITY
MAPS AND SURVEYS DIVISION
(Looney Gap 179-SW)

TENNESSEE
(HAWKINS COUNTY)
BUREM QUADRANGLE
180-NW

(Phon Grove 179-SW)
(Slong Point 180-NE)
(Georgetown 180-SW)

U. S. G. S.
FILE COPY
Inspection and Editing



Control by USC & GS, USGS, and TVA
Topography by Geological Survey from aerial
photographs by stereophotogrammetric methods
Field examination by Tennessee Valley Authority—1939
Maps distributed by the Geological Survey

MAGNETIC NORTH
TRUE NORTH
APPROXIMATE MEAN
DECLINATION, 1940

Scale: 24,000
1 inch = 2 miles
1 centimeter = 200 meters
Contour interval 20 feet with 10 foot contours shown by broken lines
Datum is mean sea level

Preliminary edition Printed by the Geological Survey

USGS
HISTORICAL FILE
TOPOGRAPHIC DIVISION

Polyconic projection, 1927 North American datum
10,000 foot grid based on Tennessee
rectangular coordinate system
ROUTES USUALLY TRAVELED
HARD IMPERVIOUS SURFACES
OTHER SURFACE IMPROVEMENTS
US ROUTE 70 STATE ROUTE 10
BUREM, TENN.
180-NW
Edition of 1940
N3622.5-W8252.5/7.5

U. S. G. S.
FILE COPY
Inspection and Editing

JUL 26 1940