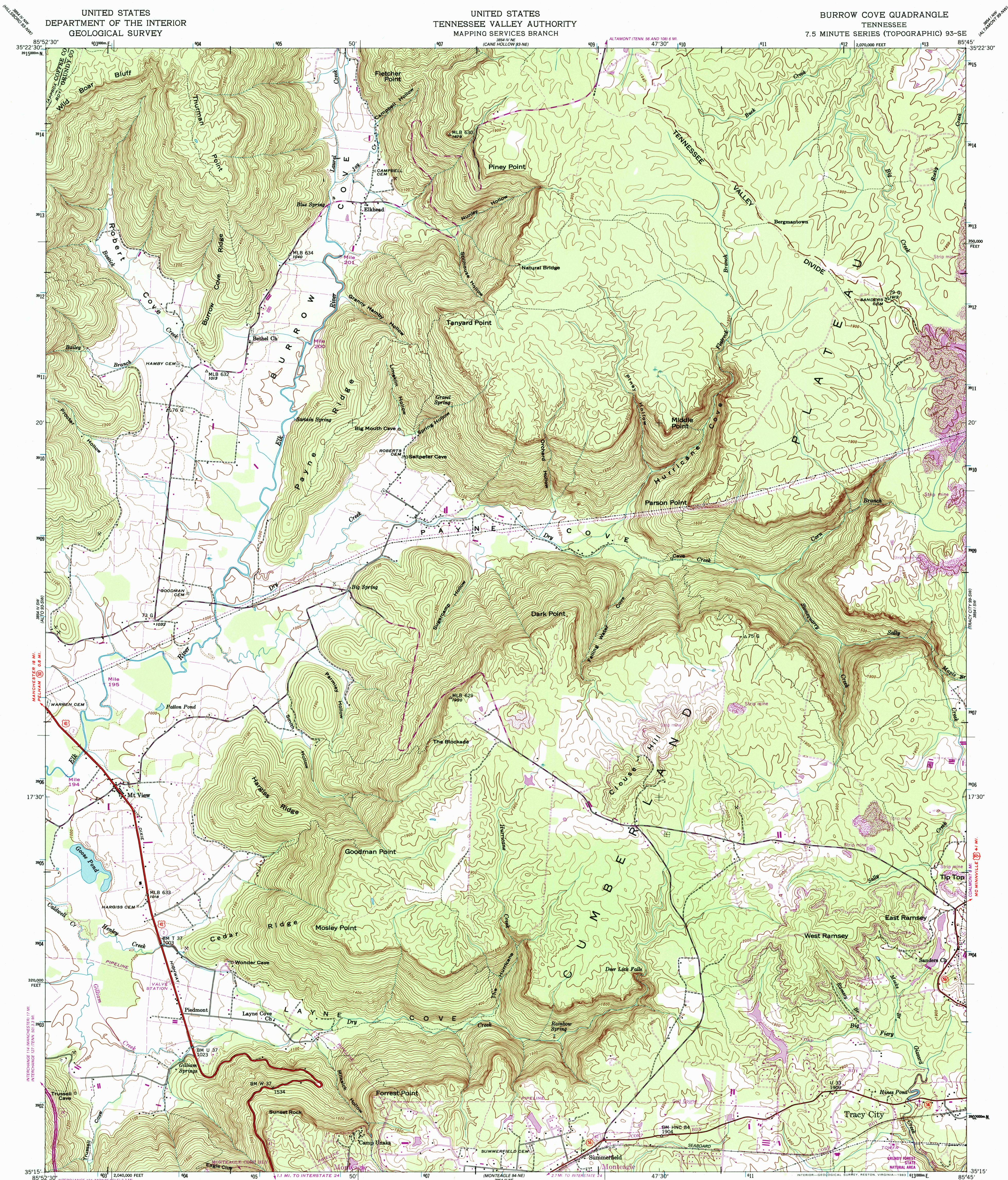


UNITED STATES  
TENNESSEE VALLEY AUTHORITY  
MAPPING SERVICES BRANCH

7.5 MINUTE SERIES (TOPOGRAPHIC) 93-SE (AL)



There may be private inholdings within the boundaries of the National or State reservations shown on this map

Revisions shown in purple and woodland compiled by the Tennessee Valley Authority from aerial photographs taken 1981 and other sources. This information not field checked. Map edited 1983

3854 10 NE  
SCALE 1:24 000

1 1000 0 1000 2000 3000 4000 5000 6000 7000 FEET  
1 5 0 1 KILOMETER

CONTOUR INTERVAL 20 FEET  
DASHED LINES REPRESENT INTER-VAL CONTOURS  
NATIONAL GEODETIC VERTICAL DATUM OF 1929

THIS MAP COMPLIES WITH NATIONAL MAP ACCURACY STANDARDS  
FOR SALE BY U. S. GEOLOGICAL SURVEY, RESTON, VIRGINIA 22092,  
TENNESSEE DEPARTMENT OF CONSERVATION, DIVISION OF GEOLOGY, NASHVILLE, TENN., 37219  
AND U. S. TENNESSEE VALLEY AUTHORITY, CHATTANOOGA, TENN. 37401 OR KNOXVILLE, TENN., 37902  
A FOLDER DESCRIBING TOPOGRAPHIC MAPS AND SYMBOLS IS AVAILABLE ON REQUEST

QUADRANGLE LOCATION

ROAD CLASSIFICATION		(TVA 93-SE)
Primary highway, all weather, hard surface	Light-duty road, all weather, improved surface	
Secondary highway, all weather, hard surface	Unimproved road, fair or dry weather	

 Interstate Route
  U. S. Route
  State Route

JUL 31 1999

USGS NMD  
HISTORICAL MAP ARCHIVES  
1947  
PHOTOREVISED 1983  
DMA 3854 IV SE-SERIES V841

ISBN 0-607-49051-9