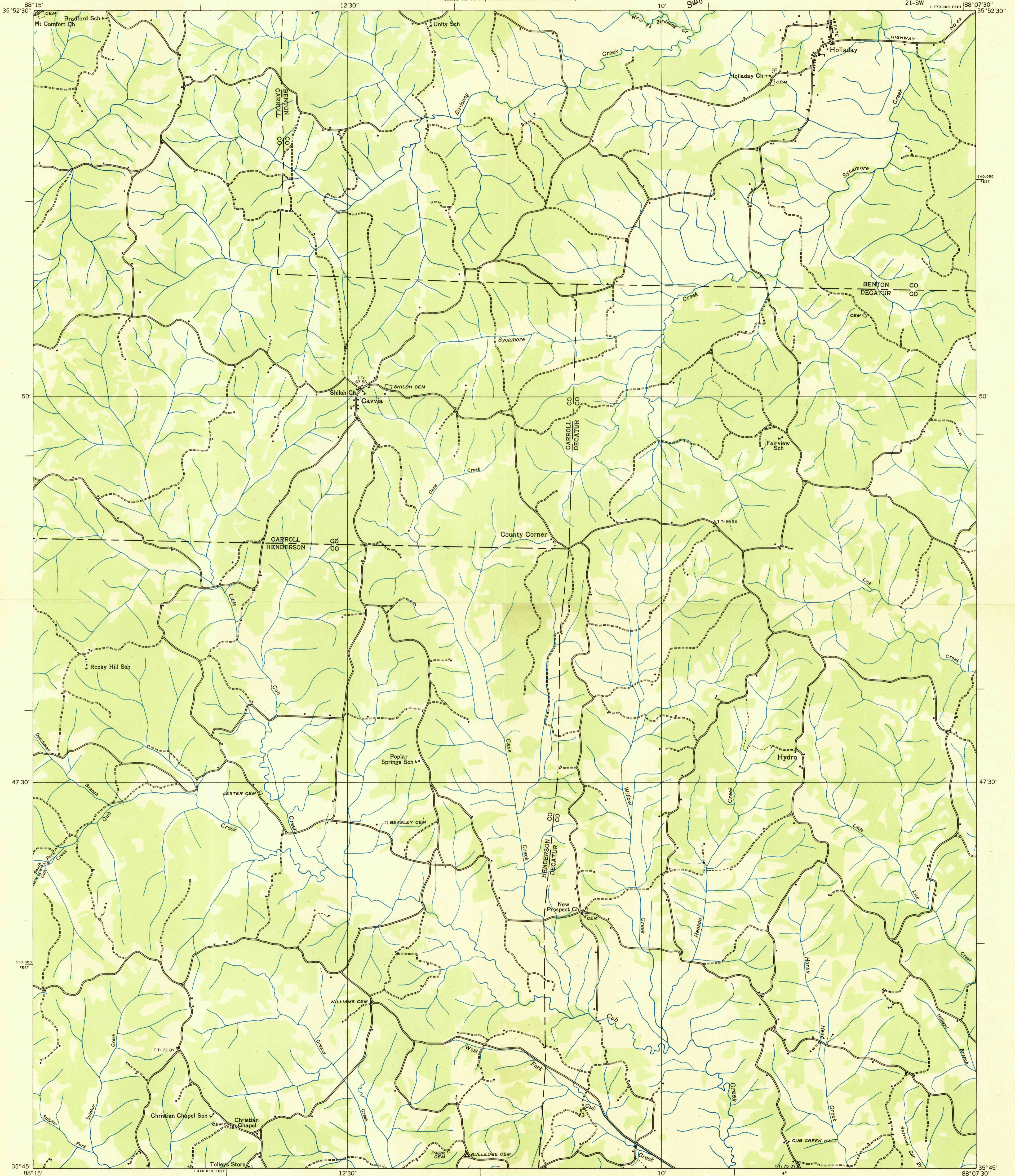
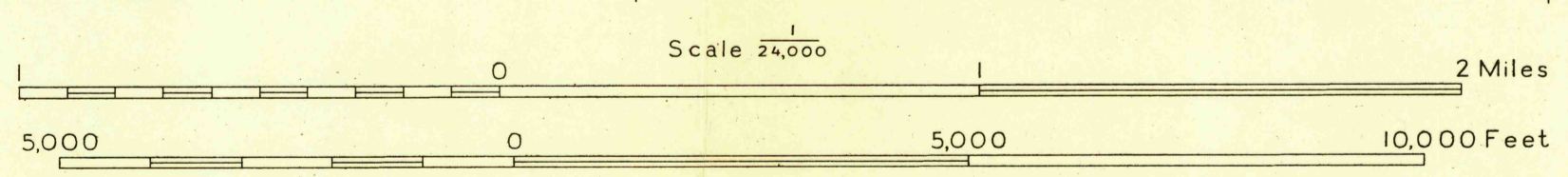


Advance sheet
Subject to correction



Albert Pike, Division Engineer
Compiled by U. S. Geological Survey from aerial photographs
Control by U. S. Geological Survey
Field examination in 1936



Polycyclic projection. 1927 North American datum
10,000 foot grid based on Tennessee
rectangular coordinate system
Trail
CAVIA, TENN.
21-SW
APPROXIMATE MEAN
DECLINATION, 1936
TRUE NORTH
MAGNETIC NORTH

USGS
HISTORICAL FILE
TOPOGRAPHIC DIVISION