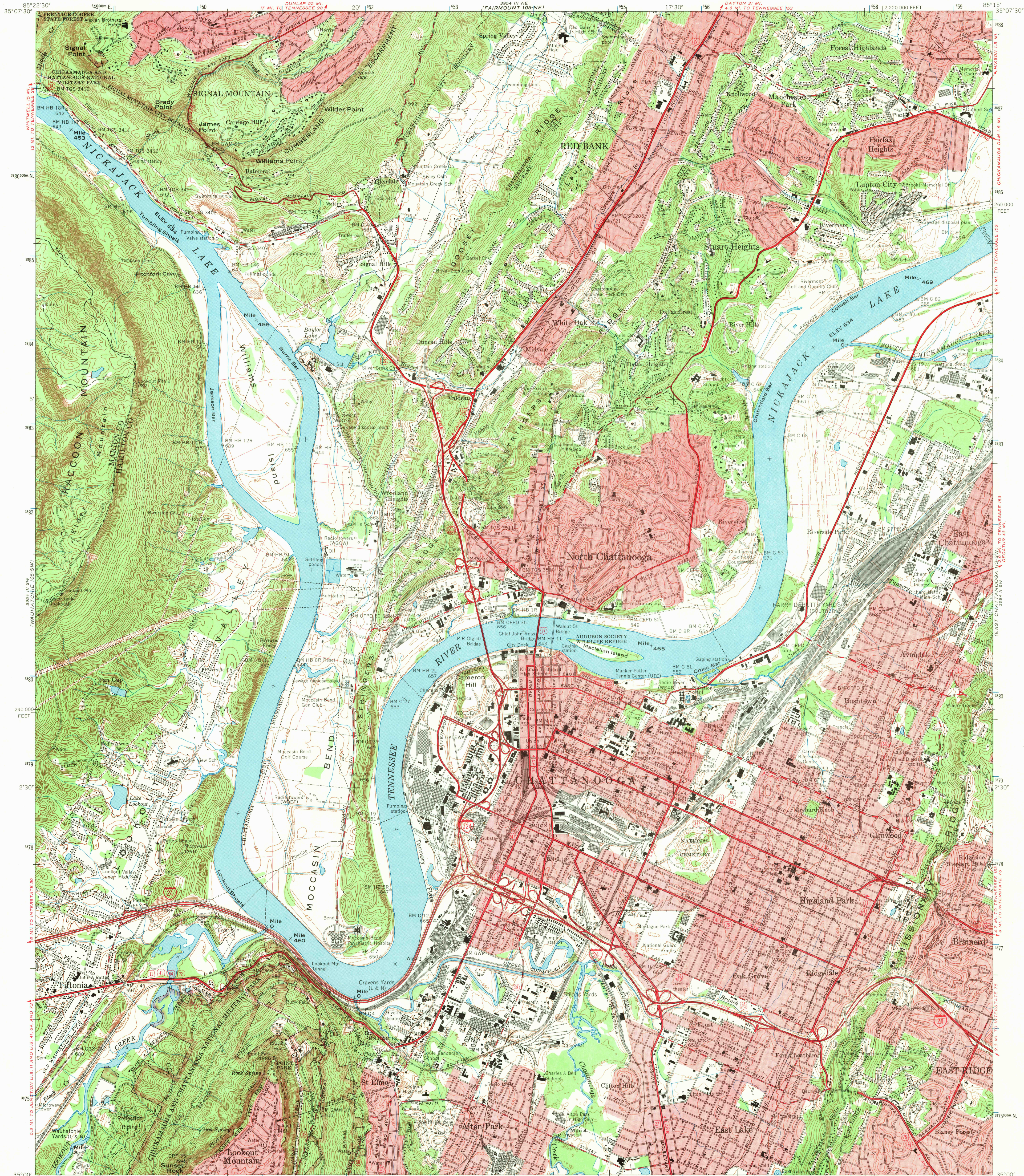


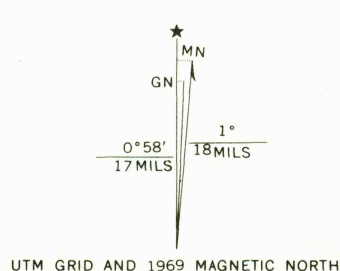
UNITED STATES
DEPARTMENT OF THE INTERIOR
GEOLOGICAL SURVEY

UNITED STATES
TENNESSEE VALLEY AUTHORITY
MAPS AND SURVEYS BRANCH

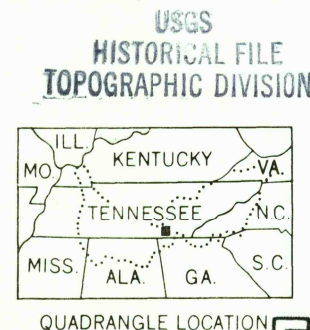
CHATTANOOGA QUADRANGLE
TENNESSEE
7.5 MINUTE SERIES (TOPOGRAPHIC) 105-SE



Mapped and edited by Tennessee Valley Authority
Published by the Geological Survey
Control by USGS, USGS, CE, and TVA
Revised by TVA in 1968 by photogrammetric methods using
aerial photographs taken 1968 and by reference to TVA/USGS
quadrangle dated 1958. Map field checked by TVA, 1969
Polyconic projection, 1927 North American datum
10,000 foot grid based on Tennessee rectangular
coordinate system
1000 meter Universal Transverse Mercator Grid ticks,
Zone 16, shown in blue
Fine red dashed lines indicate selected fence and field lines
visible on aerial photographs. This information is unchecked
Red tint indicates areas in which only landmark buildings are shown



SCALE 1:240,000
CONTOUR INTERVAL 20 FEET
DASHED LINES REPRESENT HALF-INTERVAL CONTOURS
DATUM IS MEAN SEA LEVEL
THIS MAP COMPLIES WITH NATIONAL MAP ACCURACY STANDARDS
FOR SALE BY U.S. GEOLOGICAL SURVEY, WASHINGTON, D.C. 20242,
TENNESSEE DIVISION OF GEOLOGY, NASHVILLE, TENN. 37219,
U.S. TENNESSEE VALLEY AUTHORITY, CHATTANOOGA, TENN. 37401 OR KNOXVILLE, TENN. 37902.
A FOLDER DESCRIBING TOPOGRAPHIC MAPS AND SYMBOLS IS AVAILABLE ON REQUEST



U.S.G.S.
FILE COPY
TOPOGRAPHIC DIVISION
ROAD CLASSIFICATION
Heavy-duty Poor motor road
Medium-duty Wagon and jeep track
Light-duty Foot trail
Interstate Route U. S. Route State Route
In developed areas, only through roads are classified
CHATTANOOGA, TENN.
N3500-W8515/7.5
1969
AMS 3954 III SE-SERIES V841