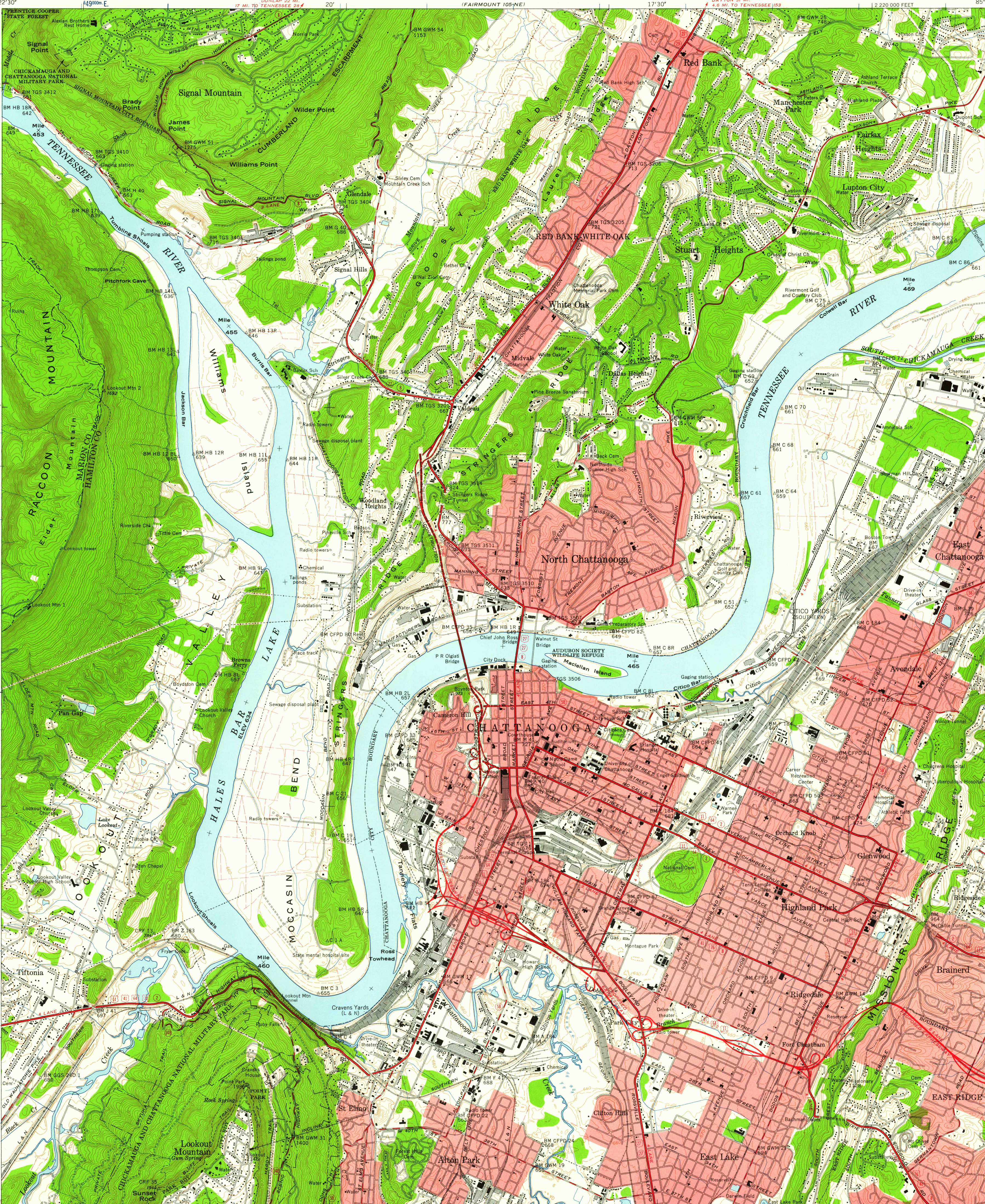


UNITED STATES
DEPARTMENT OF THE INTERIOR
GEOLOGICAL SURVEY

UNITED STATES
TENNESSEE VALLEY AUTHORITY
MAPS AND SURVEYS BRANCH

CHATTANOOGA QUADRANGLE
TENNESSEE
7.5 MINUTE SERIES (TOPOGRAPHIC) 105-SE

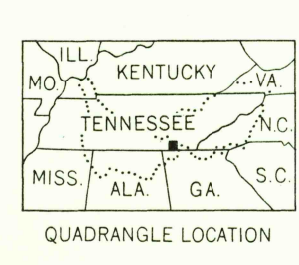


Mapped and edited by Tennessee Valley Authority
Published by the Geological Survey
Basic control by USC&GS, USGS, CE and TVA
Revised by TVA in 1958 by photogrammetric methods using
aerial photographs taken in 1957 and by reference to TVA-USGS
quadrangle dated 1941. Map field checked by TVA, 1958.
Polyconic projection. 1927 North American datum
10,000-foot grid based on Tennessee rectangular
coordinate system
1000 meter Universal Transverse Mercator Grid ticks,
Zone 16, shown in blue
Fine red dashed lines indicate selected fence and field lines
visible on aerial photographs. This information is unchecked
Red tint indicates areas in which only
landmark buildings are shown

TRUE NORTH
MAGNETIC NORTH
APPROXIMATE MEAN
DECLINATION 1958

SCALE 1:24,000
1 000 0 1000 2000 3000 4000 5000 6000 7000 FEET
1 KILOMETER
CONTOUR INTERVAL 20 FEET
DASHED LINES REPRESENT HALF-INTERVAL CONTOURS
DATUM IS MEAN SEA LEVEL
THIS MAP COMPLIES WITH NATIONAL MAP ACCURACY STANDARDS
FOR SALE BY U. S. GEOLOGICAL SURVEY, WASHINGTON 25, D. C.
TENNESSEE DIVISION OF GEOLOGY, NASHVILLE, TENN.
AND BY U. S. TENNESSEE VALLEY AUTHORITY, CHATTANOOGA OR KNOXVILLE, TENN.
A FOLDER DESCRIBING TOPOGRAPHIC MAPS AND SYMBOLS IS AVAILABLE ON REQUEST

USGS
HISTORICAL FILE
TOPOGRAPHIC DIVISION



ROAD CLASSIFICATION
Heavy-duty Poor motor road
Medium-duty Wagon and jeep track
Light-duty Foot trail
U. S. Route State Route
In developed areas, only through roads are classified

U.S.G.S.
FILE COPY
TOPOGRAPHIC DIVISION

CHATTANOOGA, TENN.
N3500-W8515/7.5
1958

APR - 4 1960
2575