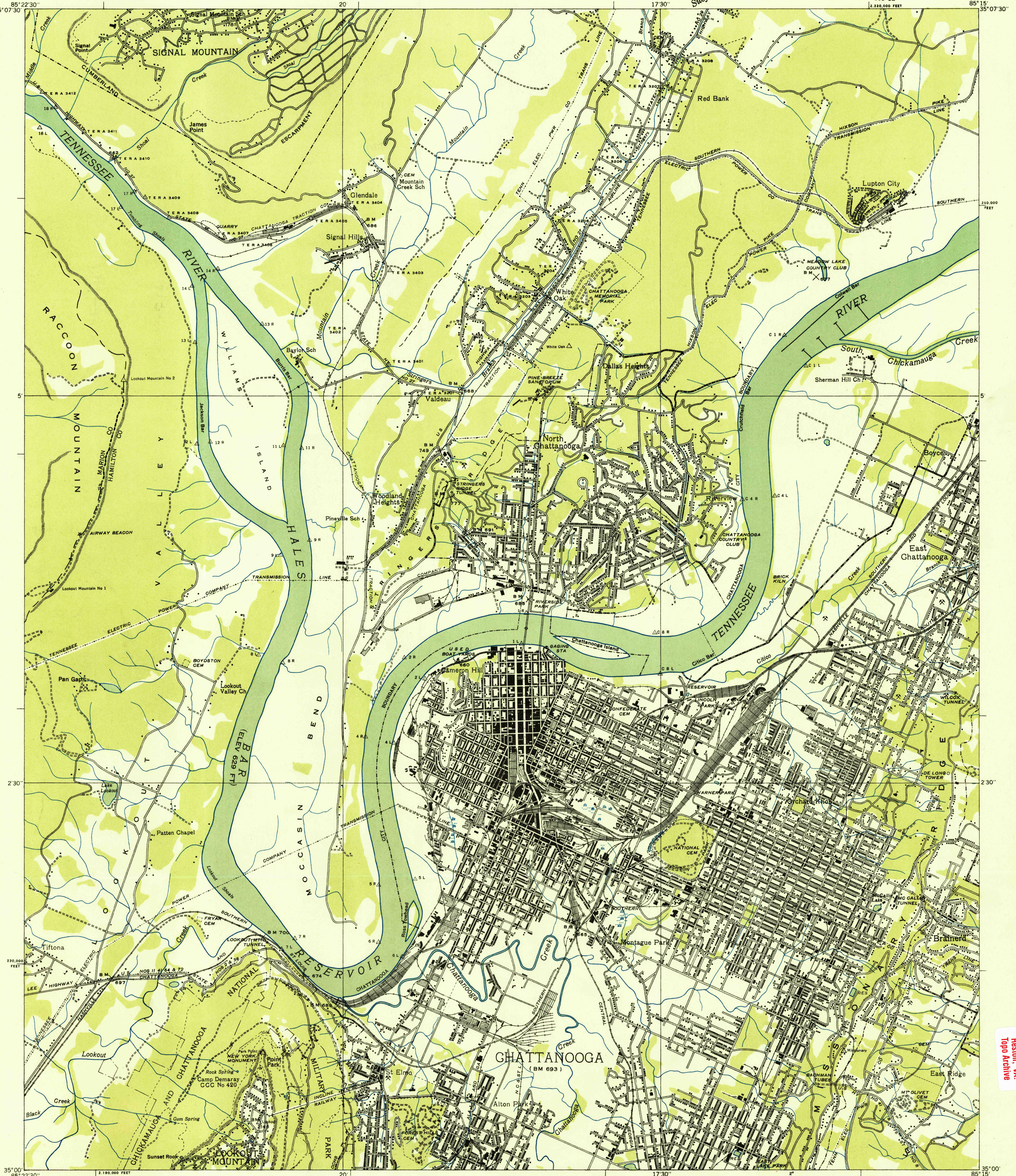
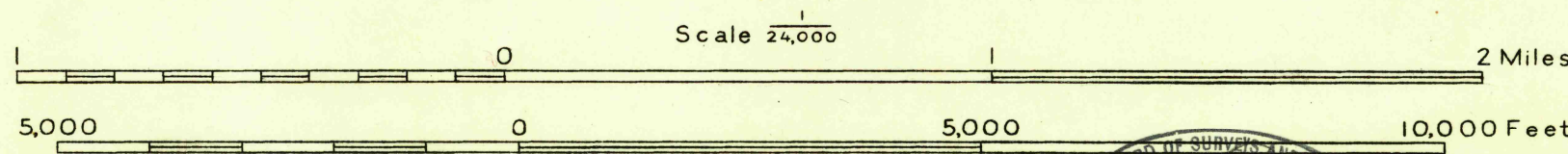


Advance sheet
Subject to correction



Albert Pike, Division Engineer
Compiled by U. S. Geological Survey from aerial photographs
Control by U. S. Geological Survey, U. S. Coast and Geodetic Survey,
Corps of Engineers, U. S. Army, Tennessee Valley Authority and Tenn. Em. Rel. Adm.
Field examination in 1936



TRUE NORTH
MAGNETIC NORTH
APPROXIMATE MEAN
DECLINATION, 1936

Polyconic projection, 1927 North American datum
10,000 foot grid based on Tennessee
rectangular coordinate system

Ridge line
Trail
Sinks
Rim rock

7 1/2' CHATTANOOGA, TENN.
105-SE

USGS LIBRARY - RESTON
3 1818 00418393 3

USGS
Current File
Topographic Division

USGS Library
Reston, VA.
Topo Archive