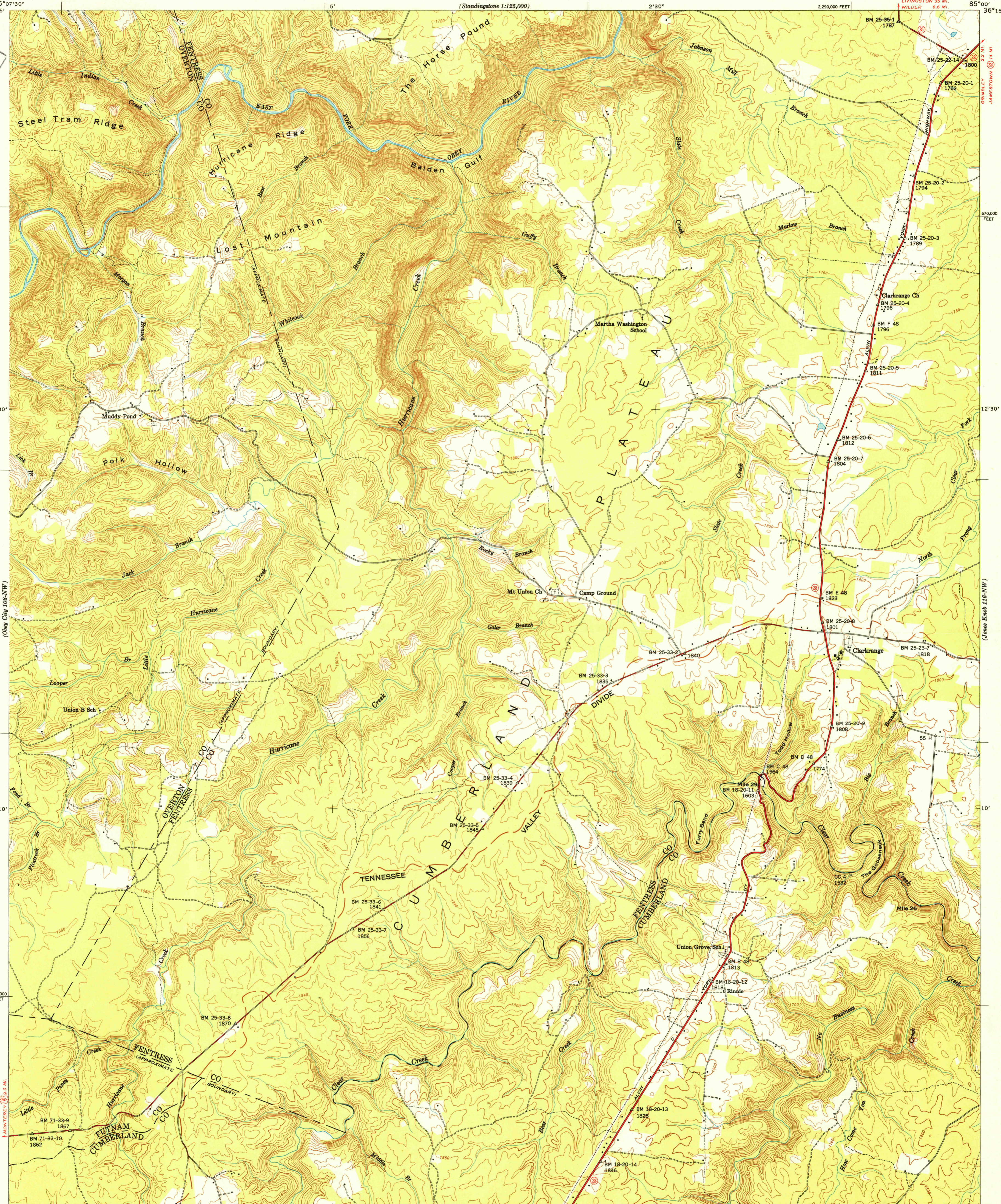
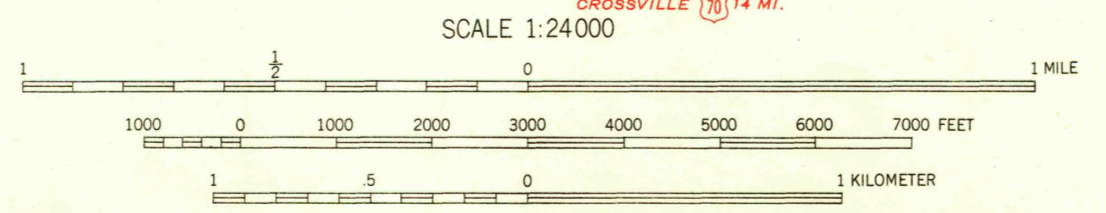


USE & FILE COPY
Instructions and Edition



Basic control by USC&GS, USGS, WPA, and TVA
Topography by USGS and TVA from aerial
photographs by stereophotogrammetric methods
Field examination by Tennessee Valley Authority, 1946
Maps distributed by the Geological Survey

TRUE NORTH
MAGNETIC NORTH
APPROXIMATE MEAN
DECLINATION, 1950



Contour interval 20 feet
Datum is mean sea level

USGS
HISTORICAL FILE
TOPOGRAPHIC DIVISION

U.S.G.S.
FILE COPY
Inspection and Editing

Polyconic projection. 1927 North American datum
10,000 foot grid based on Tennessee
rectangular coordinate system

ROUTES USUALLY TRAVELED
HARD IMPROVED SURFACES
OTHER SURFACE IMPROVEMENTS
U.S. ROUTE STATE ROUTE

CLARKRANGE, TENN.
108-NE
Edition of 1950
N3607.5-W85007.5