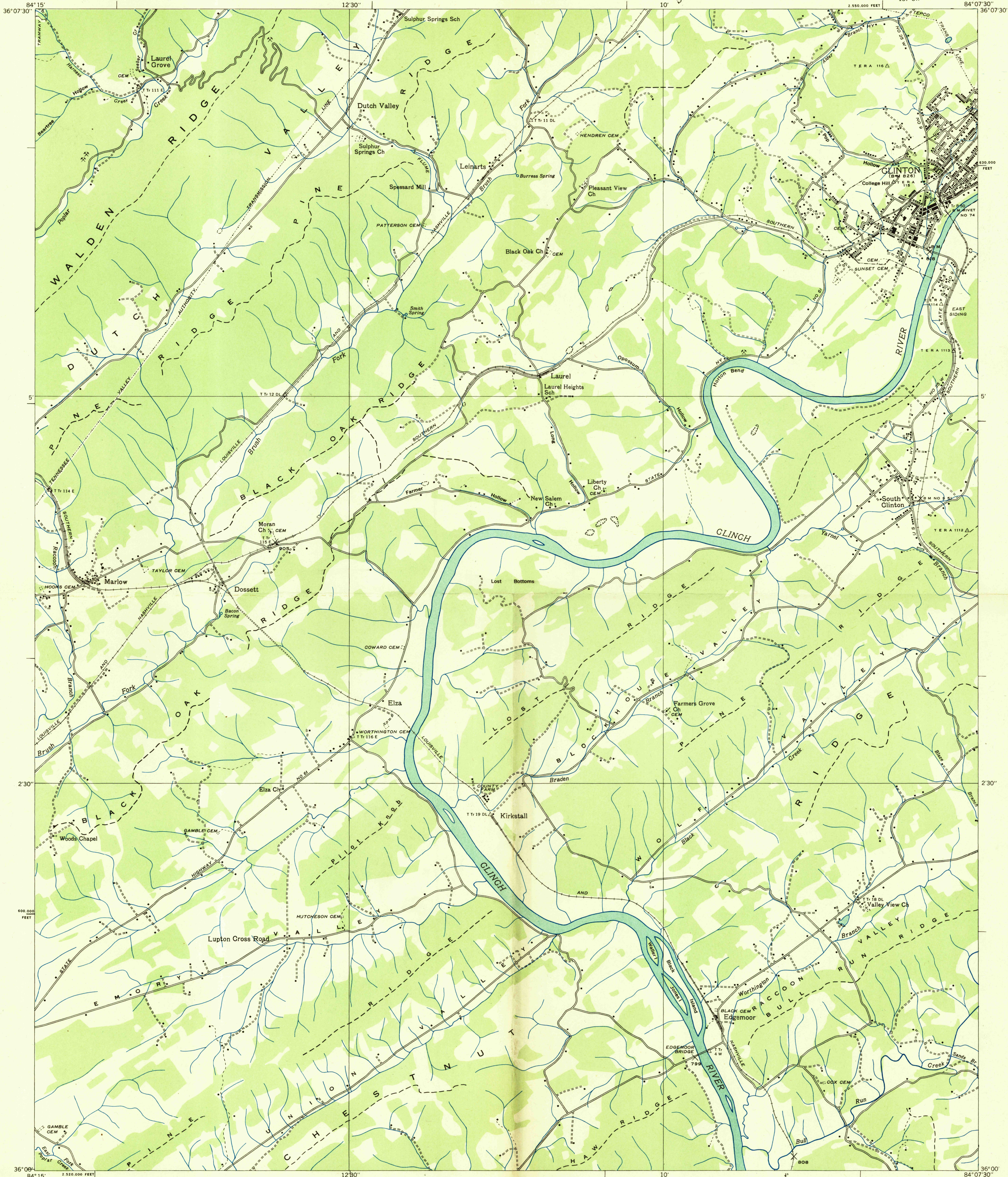


DEPARTMENT OF THE INTERIOR
U. S. GEOLOGICAL SURVEY

TENNESSEE VALLEY AUTHORITY
ARTHUR E. MORGAN, CHAIRMAN AND CHIEF ENGINEER
CARL A. BOCK, ASSISTANT CHIEF ENGINEER

TENNESSEE
(ANDERSON COUNTY)
CLINTON QUADRANGLE
137-SW

Advance sheet
Subject to correction



Albert Pike, Division Engineer
Compiled by U. S. Geological Survey from aerial photographs
Control by U. S. Geological Survey U. S. Coast and Geodetic Survey,
Corps of Engineers U. S. Army and Tenn. Em. Rel. Adm.
Field examination in 1936

Scale 24,000
0 5,000 10,000 Feet
Datum is mean sea level

Polyconic projection. 1927 North American datum
10,000 foot grid based on Tennessee
rectangular coordinate system
USGS HISTORICAL FILE TOPOGRAPHIC DIVISION
Ridge line
Trail
Sinks
CLINTON, TENN.
137-SW