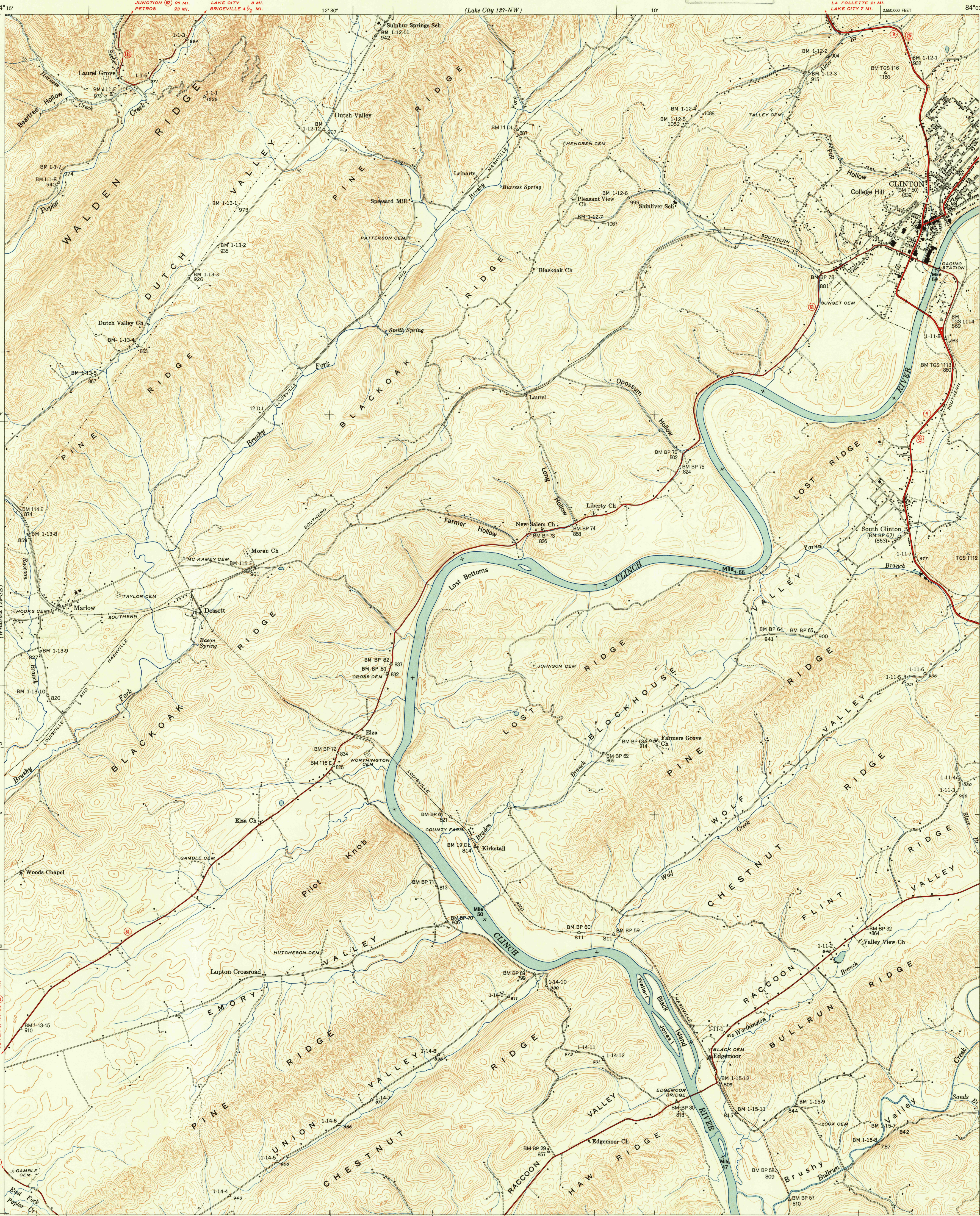


UNITED STATES
DEPARTMENT OF THE INTERIOR
GEOLOGICAL SURVEY

UNITED STATES
TENNESSEE VALLEY AUTHORITY
MAPS AND SURVEYS DIVISION

U.S.G.S.
FILE COPY
Issued in 1946

TENNESSEE
(ANDERSON COUNTY)
CLINTON QUADRANGLE
137-SW



Control by USC&GS, USGS, TVA, and WPA
Topography by Geological Survey from aerial
photographs by stereophotogrammetric methods
Field examination by Tennessee Valley Authority, 1943
Maps distributed by the Geological Survey

MAGNETIC NORTH
TRUE NORTH
APPROXIMATE MEAN
DECLINATION, 1946

Scale 24000
1 inch = 2 miles
1 centimeter = 200 meters
Contour interval 20 feet
Datum is mean sea level

U.S.G.S.
HISTORICAL TIME
TOPOGRAPHIC DIVISION

Reproduced by the U. S. Coast and Geodetic Survey 1946
Polyconic projection, 1927 North American datum
10,000 foot grid based on Tennessee
rectangular coordinate system
5,000 yard grid based on U. S. zone system, B
ROUTES USUALLY TRAVELED
HARD, IMPERVIOUS SURFACES
OTHER SURFACE IMPROVEMENTS
U. S. ROUTE STATE ROUTE

CLINTON, TENN.
137-SW
Edition of 1946
N3600-W8407.5/7.5