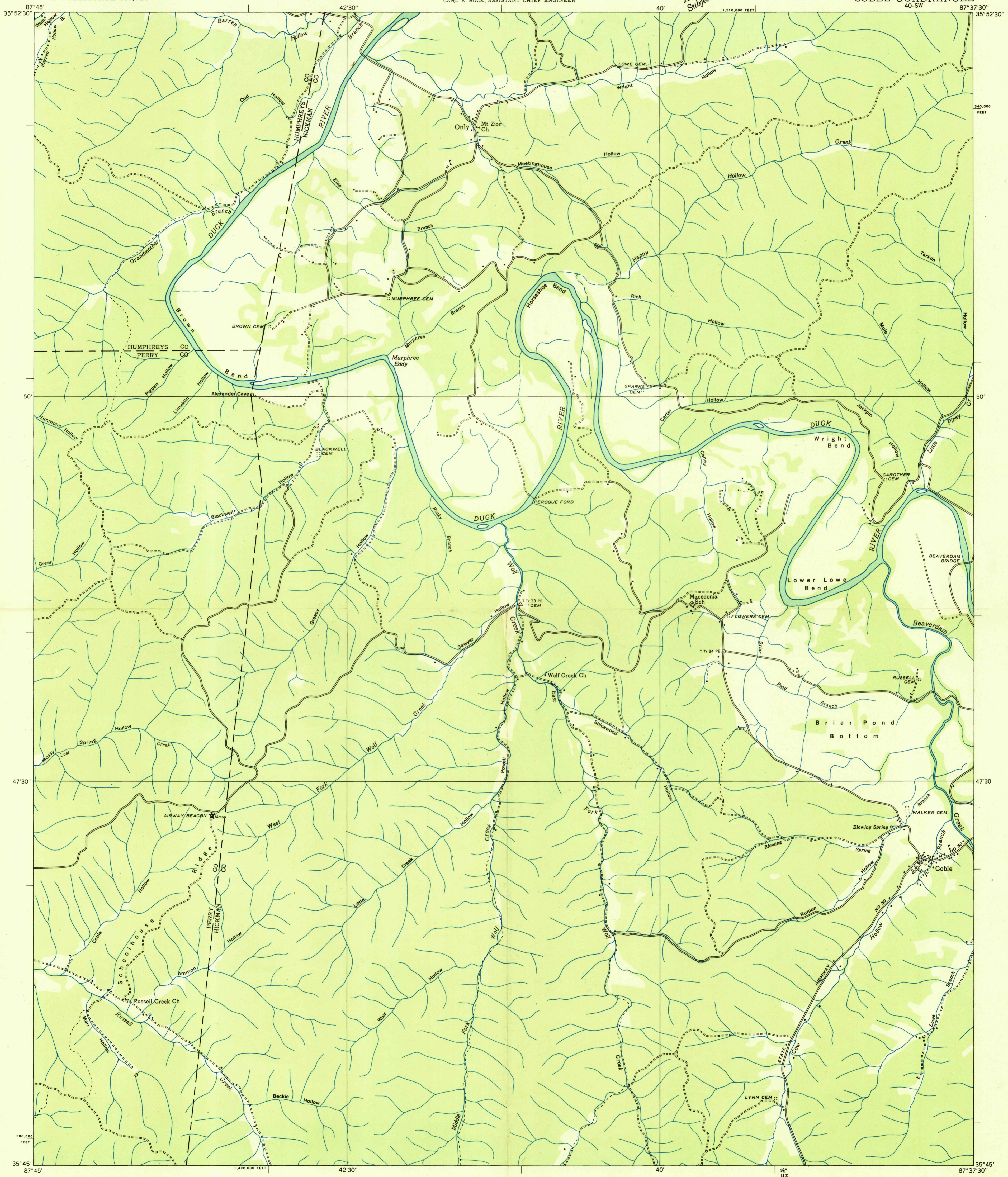
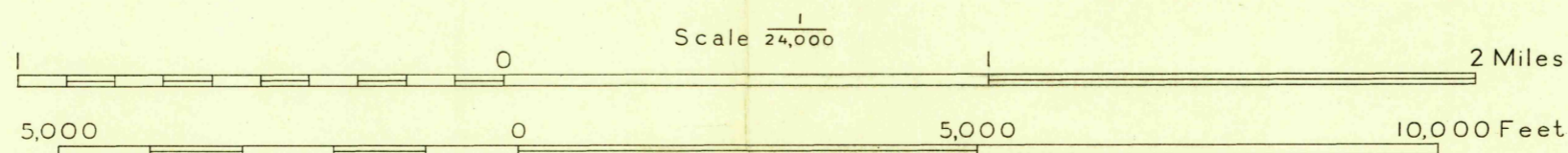


Advance sheet
Subject to correction



Albert Pike, Division Engineer
Compiled by U. S. Geological Survey from aerial photographs
Control by U. S. Geological Survey and U. S. Coast and Geodetic Survey
Field examination in 1936



31° TRUE NORTH
MAGNETIC NORTH

APPROXIMATE MEAN DECLINATION, 1986

USGS HISTORICAL FILE TOPOGRAPHIC DIVISION

Polyconic projection. 1927 North American datum
10,000 foot grid based on Tennessee rectangular coordinate system

Trail
Sinks
Probable drainage

COBLE, TENN.
40-SW